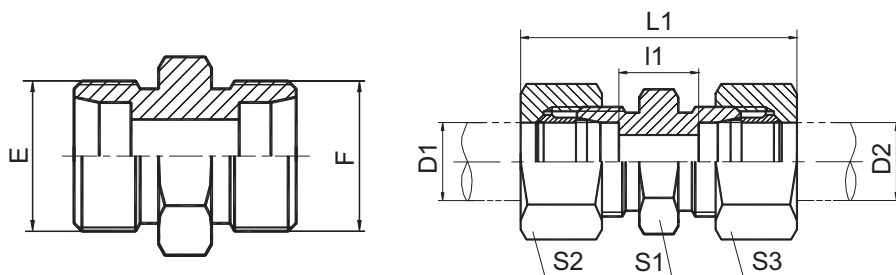


DIN 卡套式管接头



直通过头
STRAIGHT FITTINGS

1C
1D

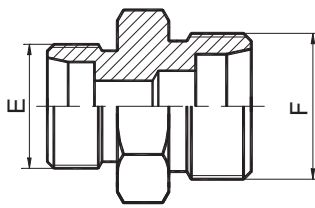
1C-RN
1D-RN

代号 PART NO.	螺纹 THREAD		管子外径 TUBE O.D.		尺寸 DIMENSIONS						压力等级 MPa
	E	F	D1	D2	l1	L1	S1	S2	S3		
1C-12	M12X1.5	M12X1.5	6	6	10	39	12	14	14		31.5 轻系列 L
1C-14	M14X1.5	M14X1.5	8	8	11	40	14	17	17		
1C-16	M16X1.5	M16X1.5	10	10	13	42	17	19	19		
1C-18	M18X1.5	M18X1.5	12	12	14	43	19	22	22		
1C-22	M22X1.5	M22X1.5	15	15	16	46	24	27	27		
1C-26	M26X1.5	M26X1.5	18	18	16	48	27	32	32		
1C-30	M30X2	M30X2	22	22	20	52	32	36	36		16 轻系列 L
1C-36	M36X2	M36X2	28	28	21	54	41	41	41		
1C-45	M45X2	M45X2	35	35	20	63	46	50	50		
1C-52	M52X2	M52X2	42	42	21	66	55	60	60		
1D-14	M14X1.5	M14X1.5	6	6	16	45	14	17	17		63 重系列 S
1D-16	M16X1.5	M16X1.5	8	8	18	47	17	19	19		
1D-18	M18X1.5	M18X1.5	10	10	17	49	19	22	22		
1D-20	M20X1.5	M20X1.5	12	12	19	51	22	24	24		
1D-22	M22X1.5	M22X1.5	14	14	22	57	24	27	27		40 重系列 S
1D-24	M24X1.5	M24X1.5	16	16	21	57	27	30	30		
1D-30	M30X2	M30X2	20	20	23	66	32	36	36		
1D-36	M36X2	M36X2	25	25	26	74	41	46	46		
1D-42	M42X2	M42X2	30	30	27	80	46	50	50		
1D-52	M52X2	M52X2	38	38	29	90	55	60	60		31.5重系列S

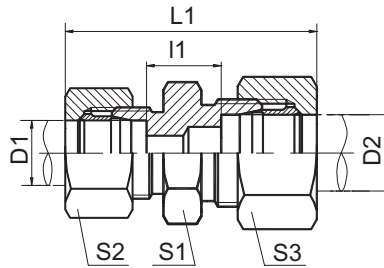
注：如需带卡套及卡套螺母整套订货，则请在代号后加“RN”，如1C9-30RN。

Note: In case if you are interested to order the adapter in complete set with cutting ring and nut ,it is necessary to insert suffix "RN" after our part no., for example 1C9-30RN.

DIN 卡套式管接头



1C
1D



1C-RN
1D-RN

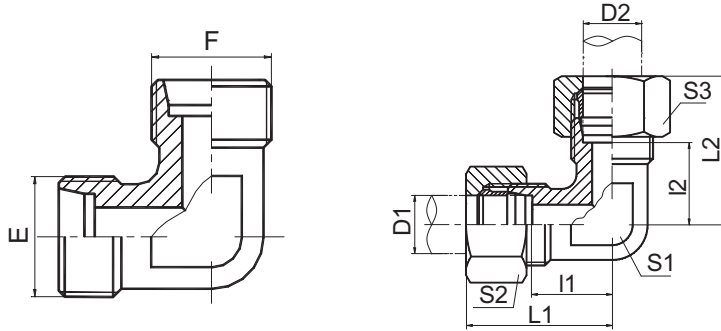
直通变径接头
STRAIGHT REDUCERS

代号 PART NO.	螺纹 THREAD		管子外径 TUBE O.D.		尺寸 DIMENSIONS					压力等级 MPa
	E	F	D1	D2	L1	l1	S1	S2	S3	
1C-12-14	M12X1.5	M14X1.5	6	8	40	11	14	15	17	31.5 轻系列 L
1C-12-16	M12X1.5	M16X1.5	6	10	41	12	17	15	19	
1C-12-18	M12X1.5	M18X1.5	6	12	42	13	19	15	22	
1C-14-16	M14X1.5	M16X1.5	8	10	41	13	17	17	19	
1C-14-18	M14X1.5	M18X1.5	8	12	42	13	19	17	22	
1C-16-18	M16X1.5	M18X1.5	10	12	43	14	19	19	22	
1C-16-22	M16X1.5	M22X1.5	10	15	44.5	15	24	19	27	
1C-16-26	M16X1.5	M26X1.5	10	18	46	15.5	27	19	32	
1C-18-22	M18X1.5	M22X1.5	12	15	44.5	15	24	22	27	
1C-18-26	M18X1.5	M26X1.5	12	18	46	15.5	27	22	32	
1C-18-30	M18X1.5	M30X2	12	22	48	17.5	32	22	36	
1C-22-26	M22X1.5	M26X1.5	15	18	47.5	16.5	27	27	32	16 轻系列 L
1C-22-30	M22X1.5	M30X2	15	22	49.5	18.5	32	27	36	
1C-26-30	M26X1.5	M30X2	18	22	50	18	32	32	36	
1C-26-36	M26X1.5	M36X2	18	28	51.5	19	41	32	41	
1C-30-36	M30X2	M36X2	22	28	53.5	21	41	36	41	
1C-30-45	M30X2	M45X2	22	35	58.5	21	46	36	50	
1C-36-45	M36X2	M45X2	28	35	59	21	46	41	50	63 重系列 S
1D-14-16	M14X1.5	M16X1.5	6	8	47	18	17	17	19	
1D-14-18	M14X1.5	M18X1.5	6	10	48	17.5	19	17	22	
1D-14-20	M14X1.5	M20X1.5	6	12	50	19.5	22	17	24	
1D-16-18	M16X1.5	M18X1.5	8	10	48	17.5	19	19	22	
1D-16-20	M16X1.5	M20X1.5	8	12	50	19.5	22	19	24	
1D-18-20	M18X1.5	M20X1.5	10	12	51	19	22	22	24	
1D-18-22	M18X1.5	M22X1.5	10	14	54	20.5	24	22	27	
1D-18-30	M18X1.5	M30X2	10	20	59.5	22	32	22	36	
1D-20-22	M20X1.5	M22X1.5	12	14	54	20.5	24	24	27	40 重系列 S
1D-20-24	M20X1.5	M24X1.5	12	16	54	20	27	24	30	
1D-20-30	M20X1.5	M30X2	12	20	59.5	22	32	24	36	
1D-22-24	M22X1.5	M24X1.5	14	16	57	21.5	27	27	30	
1D-24-30	M24X1.5	M30X2	16	20	62.5	23	32	30	36	
1D-24-36	M24X1.5	M36X2	16	25	67.5	25.5	41	30	46	
1D-30-36	M30X2	M36X2	20	25	71	25.5	41	36	46	
1D-30-42	M30X2	M42X2	20	30	74	26	46	36	50	
1D-36-42	M36X2	M42X2	25	30	77	26.5	46	46	50	
1D-42-52	M42X2	M52X2	30	38	86.5	28.5	55	50	60	

注：如需带卡套及卡套螺母整套订货，则请在代号后加“RN”，如1C9-30RN。

Note: In case if you are interested to order the adapter in complete set with cutting ring and nut ,it is necessary to insert suffix "RN" after our part no., for example 1C9-30RN.

DIN 卡套式管接头



90° 弯曲接头
90° ELBOW FITTINGS

1C9
1D9

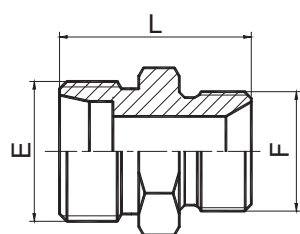
1C9-RN
1D9-RN

代号 PART NO.	螺纹 THREAD		管子外径 TUBE O.D.		尺寸 DIMENSIONS						压力等级 MPa
	E	F	D1	D2	l1,l2	L1,L2	S1	S2,S3			
1C9-12	M12X1.5	M12X1.5	6	6	12	27	12	14			31.5 轻系列 L
1C9-14	M14X1.5	M14X1.5	8	8	14	29	12	17			
1C9-16	M16X1.5	M16X1.5	10	10	15	30	14	19			
1C9-18	M18X1.5	M18X1.5	12	12	17	32	17	22			
1C9-22	M22X1.5	M22X1.5	15	15	21	36	19	27			
1C9-26	M26X1.5	M26X1.5	18	18	23.5	40	24	32			
1C9-30	M30X2	M30X2	22	22	27.5	44	27	36			16 轻系列 L
1C9-36	M36X2	M36X2	28	28	30.5	47	36	41			
1C9-45	M45X2	M45X2	35	35	34.5	56	41	50			
1C9-52	M52X2	M52X2	42	42	40	63	50	60			
1D9-14	M14X1.5	M14X1.5	6	6	16	31	12	17			63 重系列 S
1D9-16	M16X1.5	M16X1.5	8	8	17	32	14	19			
1D9-18	M18X1.5	M18X1.5	10	10	17.5	34	17	22			
1D9-20	M20X1.5	M20X1.5	12	12	21.5	38	17	24			
1D9-22	M22X1.5	M22X1.5	14	14	22	40	19	27			
1D9-24	M24X1.5	M24X1.5	16	16	24.5	43	24	30			40 重系列 S
1D9-30	M30X2	M30X2	20	20	26.5	48	27	36			
1D9-36	M36X2	M36X2	25	25	30	54	36	46			
1D9-42	M42X2	M42X2	30	30	35.5	62	41	50			
1D9-52	M52X2	M52X2	38	38	41	72	50	60			31.5 重系列S

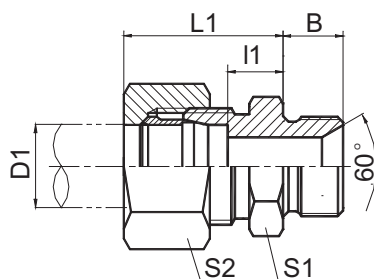
注：如需带卡套及卡套螺母整套订货，则请在代号后加“RN”，如1C9-30RN。

Note: In case if you are interested to order the adapter in complete set with cutting ring and nut ,it is necessary to insert suffix "RN" after our part no., for example 1C9-30RN.

DIN 卡套式管接头



1CB
1DB



1CB-RN
1DB-RN

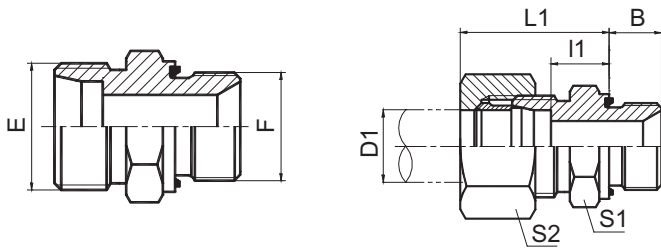
英管螺纹 60° 锥密封或
组合垫密封两用柱端
BSP THREAD 60° CONE SEALING
OR BONDED SEAL STUD ENDS

代号 PART NO.	螺纹 THREAD		管子外径 TUBE O.D. D1	尺寸 DIMENSIONS						压力等级 MPa
	E	F		B	I1	L1	L	S1	S2	
1CB-12-02	M12X1.5	G1/8"X28	6	10	8	23	24	14	14	31.5 轻系列 L
1CB-12-04	M12X1.5	G1/4"X19	6	12	9	24	28	19	14	
1CB-14-02	M14X1.5	G1/8"X28	8	10	8	23	25	14	17	
1CB-14-04	M14X1.5	G1/4"X19	8	12	9	25	28	19	17	
1CB-14-06	M14X1.5	G3/8"X19	8	13.5	9	24	28.5	22	17	
1CB-16-04	M16X1.5	G1/4"X19	10	12	10	25	28	19	19	
1CB-16-06	M16X1.5	G3/8"X19	10	13.5	12.5	25	33	22	19	
1CB-16-08	M16X1.5	G1/2"X14	10	16	11	26	32	27	19	
1CB-18-04	M18X1.5	G1/4"X19	12	12	10	25	29	19	22	
1CB-18-06	M18X1.5	G3/8"X19	12	13.5	10	25	30.5	22	22	
1CB-18-08	M18X1.5	G1/2"X14	12	16	11	26	33	27	22	
1CB-18-12	M18X1.5	G3/4"X14	12	18.5	11	26	36.5	32	22	
1CB-22-06	M22X1.5	G3/8"X19	15	13.5	11	26	31.5	24	27	
1CB-22-08	M22X1.5	G1/2"X14	15	16	12	27	34	27	27	
1CB-26-08	M26X1.5	G1/2"X14	18	16	11.5	28	35	27	32	
1CB-26-12	M26X1.5	G3/4"X14	18	18.5	11.5	28	35.5	32	32	
1CB-30-12	M30X2	G3/4"X14	22	18.5	13.5	30	39.5	32	36	16 轻系列 L
1CB-36-16	M36X2	G1"X11	28	20.5	14.5	31	42.5	41	41	
1CB-45-20	M45X2	G1.1/4"X11	35	20.5	15.5	37	45.5	50	50	
1CB-52-24	M52X2	G1.1/2"X11	42	23	16	39	50	55	60	
1DB-14-04	M14X1.5	G1/4"X19	6	12	13	28	30	19	17	63 重系列 S
1DB-16-04	M16X1.5	G1/4"X19	8	12	13	28	32	19	19	
1DB-16-06	M16X1.5	G3/8"X19	8	13.5	15	32	35.5	22	19	
1DB-18-04	M18X1.5	G1/4"X19	10	12	12.5	29	32	19	22	
1DB-18-06	M18X1.5	G3/8"X19	10	13.5	14.5	31	33.5	22	22	
1DB-18-08	M18X1.5	G1/2"X14	10	16	14.5	31	36	27	22	
1DB-20-04	M20X1.5	G1/4"X19	12	12	14.5	31	34	22	24	
1DB-20-06	M20X1.5	G3/8"X19	12	13.5	14.5	31	35.5	22	24	
1DB-20-08	M20X1.5	G1/2"X14	12	16	14.5	31	38	27	24	
1DB-22-08	M22X1.5	G1/2"X14	14	16	16	34	40	27	27	
1DB-24-06	M24X1.5	G3/8"X19	16	13.5	15.5	34	37.5	27	30	40 重系列 S
1DB-24-08	M24X1.5	G1/2"X14	16	16	15.5	34	40	27	30	
1DB-24-12	M24X1.5	G3/4"X14	16	18.5	17.5	36	44.5	32	30	
1DB-30-12	M30X2	G3/4"X14	20	18.5	17.5	39	48.5	32	36	
1DB-36-08	M36X2	G1/2"X14	25	16	19	43	48	38	46	
1DB-36-12	M36X2	G3/4"X14	25	18.5	19	43	50.5	38	46	
1DB-36-16	M36X2	G1"X11	25	20.5	20	44	52.5	41	46	
1DB-42-20	M42X2	G1.1/4"X11	30	20.5	21.5	48	54.5	50	50	
1DB-52-24	M52X2	G1.1/2"X11	38	23	23	54	62	55	60	31.5 重系列 S

注：如需带卡套及卡套螺母整套订货，则请在代号后加“RN”，如 1DB-20-08RN。

Note: In case if you are interested to order the adapter in complete set with cutting ring and nut ,it is necessary to insert suffix "RN" after our part no., for example 1DB-20-08RN.

DIN 卡套式管接头



英管螺纹胶垫密封柱端
BSP THREAD WITH CAPTIVE SEAL

1CB-WD
1DB-WD

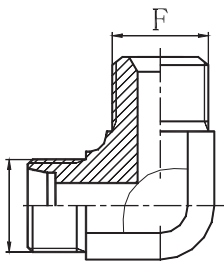
1CB-WD/RN
1DB-WD/RN

代号 PART NO.	螺纹 THREAD		管子外径 TUBE O.D. D1	尺寸 DIMENSIONS						压力等级 MPa
	E	F		B	l1	L1	S1	S2		
1CB-12-02WD	M12X1.5	G1/8"X28	6	8	8.5	23.5	14	14		31.5 轻系列 L
1CB-12-04WD	M12X1.5	G1/4"X19	6	12	10	25	19	14		
1CB-12-06WD	M12X1.5	G3/8"X19	6	12	11.5	26.5	22	14		
1CB-14-02WD	M14X1.5	G1/8"X28	8	8	9	24	14	17		
1CB-14-04WD	M14X1.5	G1/4"X19	8	12	10	24	19	17		
1CB-14-06WD	M14X1.5	G3/8"X19	8	12	11	26	22	17		
1CB-16-04WD	M16X1.5	G1/4"X19	10	12	11	24.5	19	19		
1CB-16-06WD	M16X1.5	G3/8"X19	10	12	12.5	26	22	19		
1CB-16-08WD	M16X1.5	G1/2"X14	10	14	13	28	27	19		
1CB-18-04WD	M18X1.5	G1/4"X19	12	12	12	27	19	22		
1CB-18-06WD	M18X1.5	G3/8"X19	12	12	12.5	26	22	22		
1CB-18-08WD	M18X1.5	G1/2"X14	12	14	14	28	27	22		
1CB-22-04WD	M22X1.5	G1/4"X19	15	12	13	28	24	27		
1CB-22-06WD	M22X1.5	G3/8"X19	15	12	13.5	28	24	27		
1CB-22-08WD	M22X1.5	G1/2"X14	15	14	14	29	27	27		
1CB-22-12WD	M22X1.5	G3/4"X14	15	16	15	29	32	27		
1CB-26-08WD	M26X1.5	G1/2"X14	18	14	14.5	31	27	32		
1CB-26-12WD	M26X1.5	G3/4"X14	18	16	14.5	31	32	32		
1CB-30-12WD	M30X2	G3/4"X14	22	16	16.5	33	32	36		
1CB-36-16WD	M36X2	G1"X11	28	18	17.5	34	41	41		
1CB-45-20WD	M45X2	G1.1/4"X11	35	20	17.5	39	50	50		
1CB-52-24WD	M52X2	G1.1/2"X11	42	22	19	42	55	60		
1DB-14-04WD	M14X1.5	G1/4"X19	6	12	15		19	17		
1DB-16-04WD	M16X1.5	G1/4"X19	8	12	15	30	19	19		
1DB-16-06WD	M16X1.5	G3/8"X19	8	12	15.5	30	22	19		
1DB-18-04WD	M18X1.5	G1/4"X19	10	12	14.5	31	19	22		
1DB-18-06WD	M18X1.5	G3/8"X19	10	12	14.5	31	22	22		
1DB-18-08WD	M18X1.5	G1/2"X14	10	14	17.5	34	27	22		
1DB-20-04WD	M20X1.5	G1/4"X19	12	12	16.5	33	22	24		
1DB-20-06WD	M20X1.5	G3/8"X19	12	12	15	33	22	24		
1DB-20-08WD	M20X1.5	G1/2"X14	12	14	17.5	34	27	24		
1DB-22-08WD	M22X1.5	G1/2"X14	14	14	19	37	27	27		
1DB-24-06WD	M24X1.5	G3/8"X19	16	12	18	36.5	27	30		
1DB-24-08WD	M24X1.5	G1/2"X14	16	14	18.5	37	27	30		
1DB-24-12WD	M24X1.5	G3/4"X14	16	16	20.5	39	32	30		
1DB-30-12WD	M30X2	G3/4"X14	20	16	20.5	42	32	36		
1DB-36-08WD	M36X2	G1/2"X14	25	14	23	47	41	46		
1DB-36-12WD	M36X2	G3/4"X14	25	16	23	47	41	46		
1DB-36-16WD	M36X2	G1"X11	25	18	23	47	41	46		
1DB-42-20WD	M42X2	G1.1/4"X11	30	20	23.5	50	50	50		
1DB-52-24WD	M52X2	G1.1/2"X11	38	22	26	57	55	60	31.5 重系列 S	

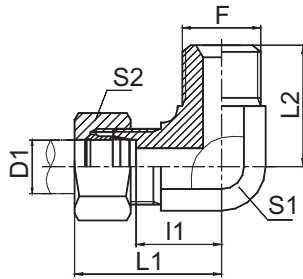
注：如需带卡套及卡套螺母整套订货，则在代号后加“RN”，如 1DB-20-08WD/RN。

Note: In case if you are interested to order the adapter in complete set with cutting ring and nut ,it is necessary to insert suffix "RN" after our part no. , for example 1DB-20-08WD/RN.

DIN 卡套式管接头



1CB9
1DB9



1CB9-RN
1DB9-RN

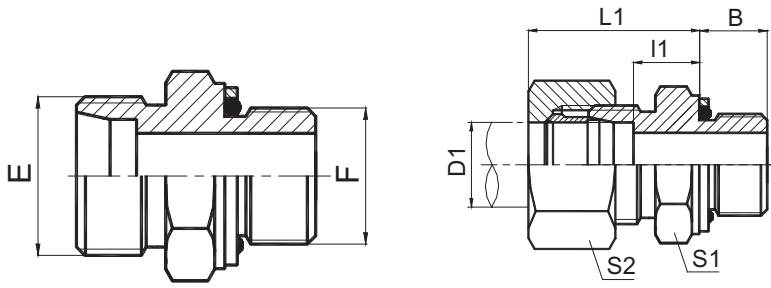
90° 弯英管螺纹60° 锥密封
90° ELBOW BSP THREAD
60° CONE SEALING

代号 PART NO.	螺纹 THREAD		管子外径 TUBE O.D. D1	尺寸 DIMENSIONS					压力等级 MPa
	E	F		L1	L1	L2	S1	S2	
1CB9-12-04	M12X1.5	G1/4"X19	6	15.5	30.5	24.5	14	14	31.5 轻系列 L
1CB9-14-04	M14X1.5	G1/4"X19	8	15.5	30.5	24.5	14	17	
1CB9-14-06	M14X1.5	G3/8"X19	8	16.5	31.5	27.5	16	17	
1CB9-16-04	M16X1.5	G1/4"X19	10	17.5	32.5	26.5	16	19	
1CB9-16-06	M16X1.5	G3/8"X19	10	17.5	32.5	27.5	16	19	
1CB9-16-08	M16X1.5	G1/2"X14	10	21	36	34.5	22	19	
1CB9-18-04	M18X1.5	G1/4"X19	12	19	34	27.5	19	22	
1CB9-18-06	M18X1.5	G3/8"X19	12	19	36	28.5	19	22	
1CB9-18-08	M18X1.5	G1/2"X14	12	21	35.5	34.5	22	22	
1CB9-22-06	M22X1.5	G3/8"X19	15	22	37	31	22	27	
1CB9-22-08	M22X1.5	G1/2"X14	15	22	37	34.5	22	27	
1CB9-26-08	M26X1.5	G1/2"X14	18	25.5	42	37.5	27	32	
1CB9-30-12	M30X2	G3/4"X14	22	29.5	46	41	30	36	16 轻系列 L
1CB9-36-16	M36X2	G1"X11	28	33.3	49.8	47.5	36	41	
1CB9-45-20	M45X2	G1.1/4"X11	35	39.2	60.7	54.5	48	50	
1CB9-52-24	M52X2	G1.1/2"X11	42	44.8	67.8	63	55	60	
1DB9-14-04	M14X1.5	G1/4"X19	6	17.5	32.5	24.5	14	17	63 重系列 S
1DB9-16-04	M16X1.5	G1/4"X19	8	18.7	33.7	26.5	16	19	
1DB9-16-06	M16X1.5	G3/8"X19	8	18.7	33.7	27.5	16	19	
1DB9-18-04	M18X1.5	G1/4"X19	10	19.5	36	27.5	19	22	
1DB9-18-06	M18X1.5	G3/8"X19	10	19.5	36	28.5	19	22	
1DB9-18-08	M18X1.5	G1/2"X14	10	21.5	38	34.5	22	22	
1DB9-20-04	M20X1.5	G1/4"X19	12	19.5	36	27.5	19	24	
1DB9-20-06	M20X1.5	G3/8"X19	12	19.5	36	28.5	19	24	
1DB9-20-08	M20X1.5	G1/2"X14	12	21.5	38	34.5	22	24	
1DB9-22-08	M22X1.5	G1/2"X14	14	23	41	34.5	22	27	
1DB9-24-06	M24X1.5	G3/8"X19	16	24	42.5	32	24	30	40 重系列 S
1DB9-24-08	M24X1.5	G1/2"X14	16	24	42.5	35	24	30	
1DB9-24-12	M24X1.5	G3/4"X14	16	26	44.5	40	27	30	
1DB9-30-12	M30X2	G3/4"X14	20	28.3	49.8	41	30	36	
1DB9-36-08	M36X2	G1/2"X14	25	32.8	56.8	42.5	36	46	
1DB9-36-12	M36X2	G3/4"X14	25	32.8	56.8	43.5	36	46	
1DB9-36-16	M36X2	G1"X11	25	32.8	56.8	47.5	36	46	
1DB9-42-20	M42X2	G1.1/4"X11	30	36.2	62.7	50.5	41	50	
1DB9-52-24	M52X2	G1.1/2"X11	38	45.8	76.8	63	55	60	

注：如需带卡套及卡套螺母整套订货，则请在代号后加“RN”，如1DB9-24-12RN。

Note: In case if you are interested to order the adapter in complete set with cutting ring and nut ,it is necessary to insert suffix "RN" after our part no., for example 1DB9-24-12RN.

DIN 卡套式管接头



英管螺纹O形圈密封柱端
BSP THREAD STUD ENDS
WITH O-RING SEALING

1CG
1DG

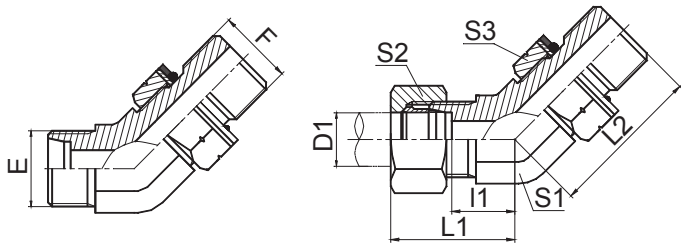
1CG-RN
1DG-RN

代 号 PART NO.	螺 纹 THREAD		管子外径 TUBE O.D.	尺 寸 DIMENSIONS						压力等级 MPa
	E	F	D1	B	I1	L1	S1	S2		
1CG-12-02	M12X1.5	G1/8"X28	6	9.5	8.5	23	14	14	31.5 轻系列 L	
1CG-12-04	M12X1.5	G1/4"X19	6	10	10	25	19	14		
1CG-14-04	M14x1.5	G1/4"X19	8	10	10	25	19	17		
1CG-14-06	M14x1.5	G3/8"X19	8	11.5	11.5	26	22	17		
1CG-14-08	M14x1.5	G1/2"X14	8	14	13	27.5	27	34		
1CG-16-04	M16x1.5	G1/4"X19	10	10	11	26	19	19		
1CG-16-06	M16x1.5	G3/8"X19	10	11.5	12.5	27	22	19		
1CG-16-08	M16x1.5	G1/2"X14	10	14	14	29	27	19		
1CG-18-06	M18x1.5	G3/8"X19	12	11.5	12.5	27	22	22		
1CG-18-08	M18x1.5	G1/2"X14	12	14	13	28	27	22		
1CG-22-06	M22x1.5	G3/8"X19	15	11.5	13.5	29	24	27		
1CG-22-08	M22x1.5	G1/2"X14	15	14	14	29	27	27		
1CG-22-12	M22x1.5	G3/4"X14	15	15.5	20	30	32	32		
1CG-26-08	M26x1.5	G1/2"X14	18	14	14.5	31	27	32		
1CG-26-12	M26x1.5	G3/4"X14	18	15.5	14.5	32	32	32		
1CG-30-12	M30x2	G3/4"X14	22	15.5	16.5	33	32	36		
1CG-30-16	M30x2	G1"X11	22	18	17.5	35	41	36		
1CG-36-16	M36x2	G1"X11	28	18	17.5	34	41	41		
1CG-45-20	M45x2	G1.1/4"X11	35	20	17.5	39	50	50		
1CG-52-20	M52X2	G1.1/4"X11	42	20	19	42	55	60		
1CG-52-24	M52x2	G1.1/2"X11	42	21.5	19	42	55	60		
1CG-52-32	M52x2	G2"X11	42	24.5	25	44	70	60		
1DG-14-04	M14X1.5	G1/4"X19	6	10	13	28	19	17		
1DG-16-04	M16X1.5	G1/4"X19	8	10	15	31	19	19		
1DG-18-04	M18x1.5	G1/4"X19	10	10	14.5	31	19	22		
1DG-18-06	M18x1.5	G3/8"X19	10	11.5	15	31	22	22		
1DG-20-06	M20x1.5	G3/8"X19	12	11.5	17	32	22	24		
1DG-20-08	M20x1.5	G1/2"X14	12	14	17.5	34	27	24		
1DG-22-06	M22x1.5	G3/8"X19	14	11.5	19	37	24	27		
1DG-22-08	M22x1.5	G1/2"X14	14	14	19	37	27	27		
1DG-24-04	M24x1.5	G1/4"X19	16	11	18	37	27	30		
1DG-24-08	M24x1.5	G1/2"X14	16	14	18.5	37	27	30		
1DG-30-12	M30x2	G3/4"X14	20	15.5	20.5	42	32	36		
1DG-36-12	M36x2	G3/4"X14	25	15.5	23	47	41	46		
1DG-36-16	M36x2	G1"X11	25	18	17.5	47	41	46		
1DG-42-16	M42x2	G1"X11	30	18	23.5	48	46	50		
1DG-42-20	M42x2	G1.1/4"X11	30	20	23.5	50	50	50		
1DG-52-24	M52x2	G1.1/2"X11	38	21.5	26	57	55	60		

注：如需带卡套及卡套螺母整套订货，则请在代号后加“RN”，如1DG-20-08RN。

Note: In case if you are interested to order the adapter in complete set with cutting ring and nut, it is necessary to insert suffix "RN" after our part no., for example 1DG-20-08RN.

DIN 卡套式管接头



45° 弯英管螺纹可调向O形圈密封柱端
45° ELBOW BSP THREAD ADJUSTABLE
STUD ENDS WITH O-RING SEALING

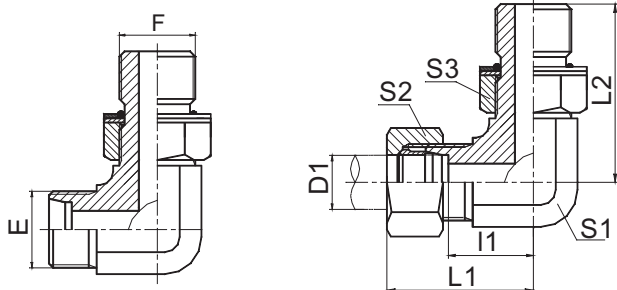
1CG4-OG
1DG4-OG

1CG4-OG/RN
1DG4-OG/RN

代号 PART NO.	螺纹 THREAD		管子外径 TUBE O.D. D1	尺寸 DIMENSIONS						压力等级 MPa
	E	F		l1	L1	L2	S1	S2	S3	
1CG4-12-02OG	M12X1.5	G1/8"X28	6	10	25	24	11	14	14	31.5 轻系列 L
1CG4-14-04OG	M14X1.5	G1/4"X19	8	11	26	27	14	17	19	
1CG4-16-04OG	M16X1.5	G1/4"X19	10	12.3	27.3	27	16	19	19	
1CG4-16-06OG	M16X1.5	G3/8"X19	10	12.3	27.3	30	16	19	22	
1CG4-18-06OG	M18X1.5	G3/8"X19	12	13	28	31	19	22	22	
1CG4-22-08OG	M22X1.5	G1/2"X14	15	15	30	36	22	27	27	
1CG4-26-08OG	M26X1.5	G1/2"X14	18	16.5	33	37.5	27	32	27	
1CG4-26-12OG	M26X1.5	G3/4"X14	18	16.5	33	42	27	32	32	
1CG4-30-12OG	M30X2	G3/4"X14	22	19.7	36.2	42.5	30	36	32	16 轻系列 L
1CG4-36-16OG	M36X2	G1"X11	28	21.5	38	44.5	36	41	41	
1CG4-45-20OG	M45X2	G1.1/4"X11	35	25.5	47	50.5	48	50	50	
1DG4-14-04OG	M14X1.5	G1/4"X19	6	13	28	27	14	17	19	63 重系列 S
1DG4-16-04OG	M16X1.5	G1/4"X19	8	13.3	28.3	27	16	19	19	
1DG4-18-06OG	M18X1.5	G3/8"X19	10	13.5	30	31	19	22	22	
1DG4-20-06OG	M20X1.5	G3/8"X19	12	13.5	30	31	19	24	22	
1DG4-22-08OG	M22X1.5	G1/2"X14	14	16.3	34.3	36	22	27	27	
1DG4-24-08OG	M24X1.5	G1/2"X14	16	16.2	34.7	36.5	24	30	27	40 重系列 S
1DG4-30-12OG	M30X2	G3/4"X14	20	18.7	40.2	42.5	30	36	32	
1DG4-36-16OG	M36X2	G1"X11	25	21	45	44.5	36	46	41	
1DG4-42-20OG	M42X2	G1.1/4"X11	30	24.3	50.8	47.5	41	50	50	

注：如需带卡套及卡套螺母整套订货，则请在代号后加“RN”，如 1CG4-30-12OG/RN。
Note: In case if you are interested to order the adapter in complete set with cutting ring and nut ,it is necessary to insert suffix "RN" after our part no., for example 1CG4-30-12OG/RN.

DIN 卡套式管接头



90° 弯英管螺纹可调向O形圈密封柱端
90° ELBOW BSP THREAD ADJUSTABLE
STUD ENDS WITH O-RING SEALING

1CG9-OG
1DG9-OG

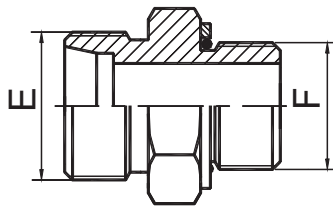
1CG9-OG/RN
1DG9-OG/RN

代号 PART NO.	螺纹 THREAD		管子外径 TUBE O.D. D1	尺寸 DIMENSIONS						压力等级 MPa	
	E	F		l1	L1	L2	S1	S2	S3		
1CG9-12-02OG	M12X1.5	G1/8"X28	6	13	28	26.2	11	14	14	31.5 轻系列 L	
1CG9-14-04OG	M14X1.5	G1/4"X19	8	15.5	30.5	31.3	14	17	19		
1CG9-16-04OG	M16X1.5	G1/4"X19	10	17.5	32.5	32.5	16	19	19		
1CG9-16-06OG	M16X1.5	G3/8"X19	10	17.5	32.5	35.8	16	19	22		
1CG9-18-06OG	M18X1.5	G3/8"X19	12	19	34	36.8	19	22	22		
1CG9-22-08OG	M22X1.5	G1/2"X14	15	22	37	43.2	22	27	27		
1CG9-26-08OG	M26X1.5	G1/2"X14	18	25.5	42	46	27	32	27		
1CG9-26-12OG	M26X1.5	G3/4"X14	18	25.5	42	49.3	27	32	32		
1CG9-30-12OG	M30X2	G3/4"X14	22	29.3	45.8	52	30	36	32		16 轻系列 L
1CG9-30-16OG	M30X2	G1"X11	22	31.5	48	53	33	36	41		
1CG9-36-16OG	M36X2	G1"X11	28	33	49.8	56	36	41	41		
1CG9-36-20OG	M36X2	G1.1/4"X11	28	36	52.8	59	41	41	50		
1CG9-45-20OG	M45X2	G1.1/4"X11	35	39.2	60.7	63	48	50	50		
1CG9-52-24OG	M52X2	G1.1/2"X11	42	44.8	67.8	68.5	55	60	55	63 重系列 S	
1DG9-14-04OG	M14X1.5	G1/4"X19	6	17.5	32.5	31.3	14	17	19		
1DG9-16-04OG	M16X1.5	G1/4"X19	8	18.7	33.7	32.5	16	19	19		
1DG9-16-06OG	M16X1.5	G3/8"X19	8	18.7	33.7	35.8	16	19	22		
1DG9-18-06OG	M18X1.5	G3/8"X19	10	19.5	36	36.8	19	22	22		
1DG9-20-06OG	M20X1.5	G3/8"X19	12	19.5	36	36.8	19	24	22		
1DG9-22-08OG	M22X1.5	G1/2"X14	14	23	41	43.2	22	27	27		
1DG9-24-08OG	M24X1.5	G1/2"X14	16	24	42.5	43	24	30	27		40 重系列 S
1DG9-30-12OG	M30X2	G3/4"X14	20	28	49.5	52	30	36	32		
1DG9-36-16OG	M36X2	G1"X11	25	32.8	56.8	56	36	46	41		
1DG9-42-20OG	M42X2	G1.1/4"X11	30	36.2	62.7	58	41	50	50		
1DG9-52-24OG	M52X2	G1.1/2"X11	38	45.8	76.8	68.5	55	60	55	31.5重系列S	

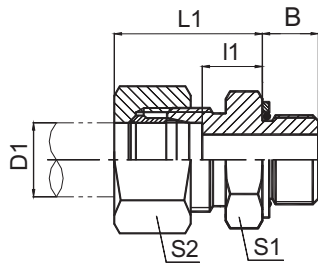
注：如需带卡套及卡套螺母整套订货，则请在代号后加“RN”，如1CG9-30-12OG/RN。

Note: In case if you are interested to order the adapter in complete set with cutting ring and nut, it is necessary to insert suffix "RN" after our part no., for example 1CG9-30-12OG/RN.

DIN 卡套式管接头



1CH
1DH



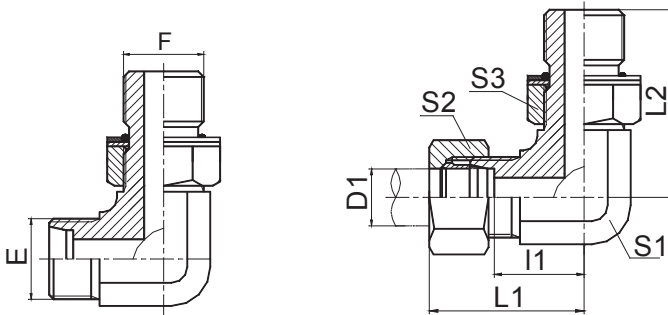
1CH-RN
1DH-RN

公制外螺纹柱端 ISO 6149
METRIC THREAD STUD ENDS
ISO 6149

代号 PART NO.	螺纹 THREAD		管子外径 D1 TUBE O.D.	O 形 圈 O RING	尺寸 DIMENSIONS					压力等级 MPa
	E	F			B	l1	L1	S1	S2	
1CH-12-10	M12X1.5	M10X1	6	O08.1X1.6	8.5	9.5	23	14	14	31.5 轻系列 L
1CH-14	M14X1.5	M14X1.5	8	O11.3X2.4	11	10	25	19	17	
1CH-14-12	M14X1.5	M12X1.5	8	O09.3X2.4	11	10	25	17	17	
1CH-16-14	M16X1.5	M14X1.5	10	O11.3X2.4	11	13	26	19	19	
1CH-18-14	M18X1.5	M14X1.5	12	O11.3X2.4	11	11	25.5	19	22	
1CH-14-18	M14X1.5	M18X1.5	8	O15.3X2.4	12.5	11.5	26.5	24	17	
1CH-16	M16X1.5	M16X1.5	10	O13.3X2.4	11.5	13	28	22	19	
1CH-16-18	M16X1.5	M18X1.5	10	O15.3X2.4	12.5	12.5	28	24	19	
1CH-18-16	M18X1.5	M16X1.5	12	O13.3X2.4	11.5	12	27	22	22	
1CH-22-16	M22X1.5	M16X1.5	15	O13.3X2.4	11.5	13.5	29.5	24	27	
1CH-22-18	M22X1.5	M18X1.5	15	O15.3X2.4	12.5	13.5	29	24	27	
1CH-16-22	M16X1.5	M22X1.5	10	O19.3X2.4	13	14	29.5	27	19	
1CH-22-20	M22X1.5	M20X1.5	15	O17.3X2.4	12	15	30.5	27	27	
1CH-22	M22X1.5	M22X1.5	15	O19.3X2.4	13	15	31	27	27	
1CH-26-22	M26X1.5	M22X1.5	18	O19.3X2.4	13	14.5	31	27	32	
1CH-26	M26X1.5	M26X1.5	18	O23.5X3.0	13.5	13.5	31	32	32	
1CH-26-27	M26X1.5	M27X2	18	O23.5X3.0	16	14.5	32	32	32	
1CH-26-33	M26X1.5	M33X2	18	O29.5X3.0	16	15.5	33	41	32	
1CH-30-22	M30X2	M22X1.5	22	O19.3X2.4	13	17.5	33	32	41	
1CH-30-27	M30X2	M27X2	22	O23.5X3.0	16	16.5	33	32	36	
1CH-30	M30X2	M30X2	22	O26.5X3.0	16	17.5	33	36	36	
1CH-36-27	M36X2	M27X2	28	O23.5X3.0	16	17.5	34	41	41	
1CH-36-33	M36X2	M33X2	28	O29.5X3.0	16	17.5	34	41	41	
1CH-36-42	M36X2	M42X2	28	O38.5X3.0	16	18.5	35	50	41	
1CH-45-33	M45X2	M33X2	35	O29.5X3.0	16	17.5	37	46	50	
1CH-45-42	M45X2	M42X2	35	O38.5X3.0	16	17.5	37	50	50	
1CH-52-48	M52X2	M48X2	42	O44.5X3.0	17.5	19		55	60	
1DH-14	M14X1.5	M14X1.5	6	O11.3X2.4	11	15	28	19	17	
1DH-14-12	M14X1.5	M12X1.5	6	O09.3X2.4	11	13	28	17	17	
1DH-16-14	M16X1.5	M14X1.5	8	O11.3X2.4	11	15	30	19	19	
1DH-18-16	M18X1.5	M16X1.5	10	O13.3X2.4	11.5	15	31	22	22	
1DH-20-14	M20X1.5	M14X1.5	12	O11.3X2.4	11	15	31	22	24	
1DH-20-16	M20X1.5	M16X1.5	12	O13.3X2.4	11.5	15	31	22	24	
1DH-20-18	M20X1.5	M18X1.5	12	O15.3X2.4	12.5	17	33	24	24	
1DH-20-22	M20X1.5	M22X1.5	12	O19.3X2.4	13	17.5	35	27	30	
1DH-24-22	M24X1.5	M22X1.5	16	O19.3X2.4	13	18.5	37	27	30	
1DH-30	M30X2	M30X2	20	O26.5X3.0	16	20.5	42	36	36	
1DH-30-27	M30X2	M27X2	20	O23.5X3.0	16	20.5	42	32	36	
1DH-30-33	M30X2	M33X2	20	O29.5X3.0	16	22.5	42	41	36	
1DH-36-27	M36X2	M27X2	25	O23.5X3.0	16	23	47	41	46	
1DH-36-33	M36X2	M33X2	25	O29.5X3.0	16	23	47	41	46	
1DH-42	M42X2	M42X2	30	O38.5X3.0	16	23.5	50	50	50	
1DH-42-48	M42X2	M48X2	30	O44.5X3.0	17.5	26.5	52	55	50	

注：如需带卡套及卡套螺母整套订货，则请在代号后加“RN”，如1DH-20-18RN。

DIN 卡套式管接头



90° 弯公制外螺纹可调向柱端 ISO 6149
 90° ELBOW METRIC THREAD
 ADJUSTABLE
 STUD ENDS ISO 6149

1CH9-OG
1DH9-OG

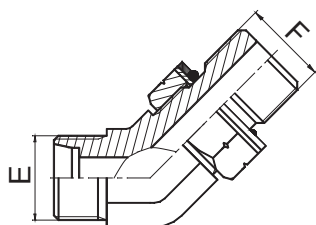
1CH9-OG/RN
1DH9-OG/RN

代号 PART NO.	螺纹 THREAD		管子外径D1 TUBE O.D.	O 形 圈 O RING	尺寸 DIMENSIONS						压力等级 MPa
	E	F			l1	L1	L2	S1	S2	S3	
1CH9-12-10OG	M12X1.5	M10X1	6	O08.1X1.6	13	28	26.5	11	14	14	31.5 轻系列 L
1CH9-14-12OG	M14X1.5	M12X1.5	8	O09.3X2.4	15.5	30.5	32	14	17	17	
1CH9-16-14OG	M16X1.5	M14X1.5	10	O11.3X2.4	17.5	32.5	34	16	19	19	
1CH9-18-16OG	M18X1.5	M16X1.5	12	O13.3X2.4	19	34	36	19	22	22	
1CH9-22-18OG	M22X1.5	M18X1.5	15	O15.3X2.4	22	37	39.5	22	27	24	
1CH9-26-22OG	M26X1.5	M22X1.5	18	O19.3X2.4	25.5	42	43.5	27	32	27	
1CH9-30-27OG	M30X2	M27X2	22	O23.5X3.0	29.3	45.8	50	30	36	32	16 轻系列L
1CH9-36-33OG	M36X2	M33X2	28	O29.5X3.0	33.3	49.8	54	36	41	41	
1DH9-14-12OG	M14X1.5	M12X1.5	6	O09.3X2.4	17.5	32.5	32	14	17	17	63 重系列 S
1DH9-16-14OG	M16X1.5	M14X1.5	8	O11.3X2.4	18.7	33.7	34	16	19	19	
1DH9-18-16OG	M18X1.5	M16X1.5	10	O13.3X2.4	19.5	36	36	19	22	22	
1DH9-20-18OG	M20X1.5	M18X1.5	12	O15.3X2.4	19.5	36	37	19	24	24	
1DH9-22-20OG	M22X1.5	M20X1.5	14	O17.3X2.4	23	41	40	22	27	27	
1DH9-24-22OG	M24X1.5	M22X1.5	16	O19.3X2.4	24	42	37.5	24	30	27	
1DH9-30-27OG	M30X2	M27X2	20	O23.5X3.0	28.3	49.8	50	30	36	32	40 重系列 S
1DH9-36-33OG	M36X2	M33X2	25	O29.5X3.0	32.8	56.8	54	36	46	41	
1DH9-42OG	M42X2	M42X2	30	O38.5X3.0	36.2	62.7	57.2	41	50	50	

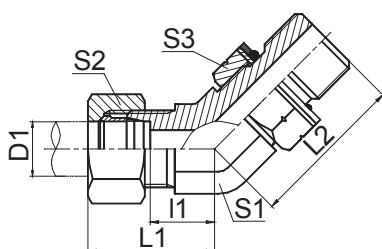
注：如需带卡套及卡套螺母整套订货，则请在代号后加“RN”，如1DH9-20-18OG/RN。

Note: In case if you are interested to order the adapter in complete set with cutting ring and nut ,it is necessary to insert suffix "RN" after our part no. , for example 1DH9-20-18OG/RN.

过渡接头 ADAPTER



1CH4-OG
1DH4-OG



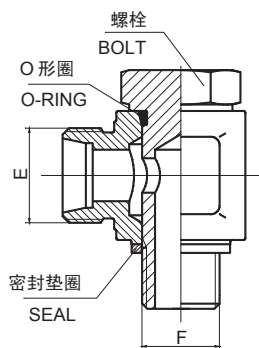
1CH4-OG/RN
1DH4-OG/RN

45° 弯公制外螺纹24° 锥/公制外螺纹可调向柱端ISO 6149-2
45° ELBOW METRIC MALE 24° CONE/METRIC MALE
ADJUSTABLE STUD END ISO 6149-2

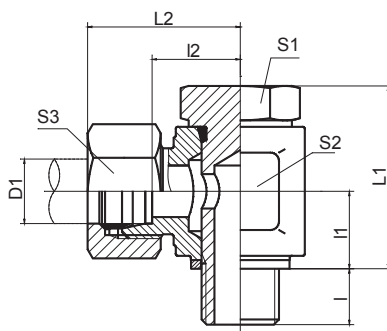
代号 PART NO.	螺纹 THREAD		管子外径 D1 TUBE O.D.	O 形 圈 O RING	尺寸 DIMENSIONS						压力等级 MPa
	E	F			I1	L1	L2	S1	S2	S3	
1CH4-12-10OG	M12X1.5	M10X1	6	O08.1X1.6	10	25	25.5	11	14	14	31.5 轻系列 L
1CH4-14-12OG	M14X1.5	M12X1.5	8	O09.3X2.4	11	26	30	14	17	17	
1CH4-16-14OG	M16X1.5	M14X1.5	10	O11.3X2.4	12.3	27.3	30.5	16	19	19	
1CH4-18-16OG	M18X1.5	M16X1.5	12	O13.3X2.4	13	28	34	19	22	22	
1CH4-22-18OG	M22X1.5	M18X1.5	15	O15.3X2.4	15	30	38	22	27	24	
1CH4-26-22OG	M26X1.5	M22X1.5	18	O19.3X2.4	16.5	33	40.5	27	32	27	
1CH4-30-27OG	M30X2	M27X2	22	O23.5X3.0	19.7	36.2	48	30	36	32	16 轻系列 L
1CH4-36-33OG	M36X2	M33X2	28	O29.5X3.0	21.5	38	49.5	36	41	41	
1CH4-45-42OG	M45X2	M42X2	35	O38.5X3.0	25.5	47	55	48	50	50	
1DH4-14-12OG	M14X1.5	M12X1.5	6	O09.3X2.4	13	28	30	14	17	17	40 重系列 S
1DH4-16-14OG	M16X1.5	M14X1.5	8	O11.3X2.4	13.3	28.3	30.5	16	19	19	
1DH4-18-16OG	M18X1.5	M16X1.5	10	O13.3X2.4	13.5	30	34	19	22	22	
1DH4-20-18OG	M20X1.5	M18X1.5	12	O15.3X2.4	13.5	30	37	19	24	24	
1DH4-24-22OG	M24X1.5	M22X1.5	16	O19.3X2.4	16.2	34.7	40	24	30	27	
1DH4-30-27OG	M30X2	M27X2	20	O23.5X3.0	18.7	40.2	48	30	36	32	
1DH4-36-33OG	M36X2	M33X2	25	O29.5X3.0	21	45	49.5	36	46	41	31.5重系列 S
1DH4-42-42OG	M42X2	M42X2	30	O38.5X3.0	24.3	50.8	54	41	50	50	25重系列 S

注：1 如需带卡套及卡套螺母整套订货，则请在代号后加“RN”，如1CH4-30-27OG/RN。 2 F端与ISO 9974-1油口相配，去掉挡圈则与ISO 6149-1油口相配。

Note: 1 In case if you are interested to order the adapter in complete set with cutting ring and nut ,it is necessary to insert suffix "RN" after our part no., for example 1CH4-30-27OG/RN. 2 F end is connectedwith ISO 9974-1 port and connected with ISO 6149-1 port without retaining ring.



1CI
1DI



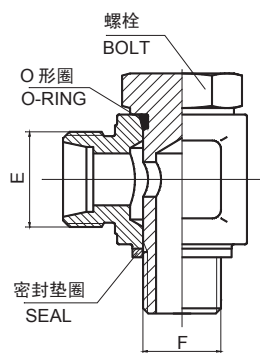
1CI-RN
1DI-RN

公制螺纹铰接接头
METRIC BANJO

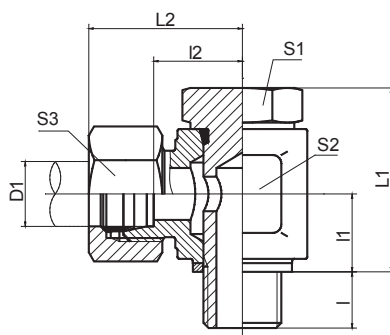
代号 PART NO.	螺 纹THREAD		管子外径D1 TUBE O.D.	尺 寸DIMENSIONS									螺栓 BOLT	O 形圈 O-RING	密封垫圈 SEAL	压力等级 MPa
	E	F		I	I1	L1	I2	L2	S1	S2	S3					
1CI-12-10	M12X1.5	M10X1	6	8	11	25.5	12	27	14	17	14	700M-10I	O08.1X1.6	ZHD-10	31.5 轻系列 L	
1CI-14-12	M14X1.5	M12X1.5	8	12	14.5	33	14.5	29	17	22	17	700M-12I	O09.3X2.4	ZHD-12		
1CI-16-14	M16X1.5	M14X1.5	10	12	14.5	33	16.5	31	19	24	19	700M-14I	O11.3X2.4	ZHD-14		
1CI-18-16	M18X1.5	M16X1.5	12	12	17	39	19	34	22	27	22	700M-16I	O13.3X2.4	ZHD-16		
1CI-22-18	M22X1.5	M18X1.5	15	12	18.5	42	21.5	37	24	30	27	700M-18I	O15.3X2.4	ZHD-18		
1CI-26-22	M26X1.5	M22X1.5	18	14	21.5	49	22	38	27	32	32	700M-22I	O19.3X2.4	ZHD-22		
1CI-30-26	M30X2	M26X1.5	22	16	24	56	28.5	45	36	41	36	700M-26I	O23.5X3.0	ZHD-27	16 轻系列 L	
1CI-36-33	M36X2	M33X2	28	18	30.5	71	33	50	41	50	41	700M-33I	O29.5X3.0	ZHD-33		
1CI-45-42	M45X2	M42X2	35	20	35.5	82	37	59	50	60	50	700M-42I	O38.5X3.0	ZHD-42		
1CI-52-48	M52X2	M48X2	42	22	40.5	93	41.5	64	55	70	60	700M-48I	O44.5X3.0	ZHD-48		
1DI-14-12	M14X1.5	M12X1.5	6	12	14.5	33	16.5	31	17	22	17	700M-12I	O09.3X2.4	ZHD-12	63 重系列 S	
1DI-16-14	M16X1.5	M14X1.5	8	12	14.5	33	17.5	32	19	24	19	700M-14I	O11.3X2.4	ZHD-14		
1DI-18-16	M18X1.5	M16X1.5	10	12	17	39	19.5	36	22	27	22	700M-16I	O13.3X2.4	ZHD-16		
1DI-20-18	M20X1.5	M18X1.5	12	12	18.5	42	21	37	24	30	24	700M-18I	O15.3X2.4	ZHD-18		
1DI-22-20	M22X1.5	M20X1.5	14	14	20	46	23.5	41	27	32	27	700M-20I	O17.3X2.4	ZHD-20		
1DI-24-22	M24X1.5	M22X1.5	16	14	21.5	49	23	41	27	32	30	700M-22I	O19.3X2.4	ZHD-22		
1DI-30-27	M30X2	M27X2	20	16	24	56	27.5	49	36	41	36	700M-27I	O23.5X3.0	ZHD-27	40 重系列 S	
1DI-36-33	M36X2	M33X2	25	18	30.5	71	32.5	57	41	50	46	700M-33I	O29.5X3.0	ZHD-33		
1DI-42	M42X2	M42X2	30	20	35.5	82	38	65	50	60	50	700M-42I	O38.5X3.0	ZHD-42		
1DI-52-48	M52X2	M48X2	38	22	40.5	93	42.5	73	55	70	60	700M-48I	O44.5X3.0	ZHD-48		

注：如需带卡套及卡套螺母整套订货，则请在代号后加“RN”，如1D1-36-33RN。

Note: In case if you are interested to order the adapter in complete set with cutting ring and nut ,it is necessary to insert suffix "RN" after our part no., for example 1D1-36-33RN.



1CI-B
1DI-B



1CI-B/RN
1DI-B/RN

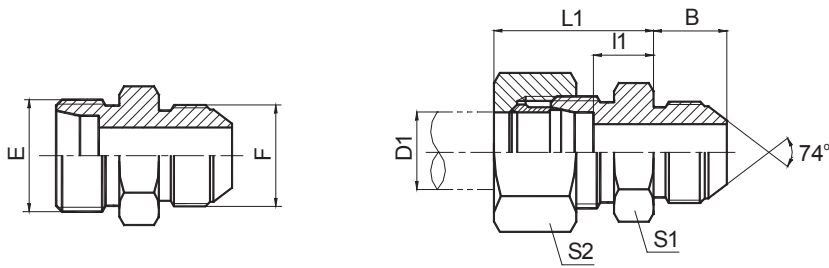
英管螺纹铰接接头
BSP BANJO

代号 PART NO.	螺纹THREAD		管子外径D1 TUBE O.D.	尺寸 DIMENSIONS									螺栓 BOLT	O形圈 O-RING	密封垫圈 SEAL	压力等级 MPa
	E	F		I	I1	L1	I2	L2	S1	S2	S3					
1CI-12-B02	M12X1.5	G1/8"	6	8	11	25.5	12	27	14	17	14	720B-02I	O08.1X1.6	ZHD-10	31.5 轻系列 L	
1CI-14-B04	M14X1.5	G1/4"	8	12	14.5	33	15.5	30	19	24	17	720B-04I	O11.3X2.4	ZHD-14		
1CI-16-B04	M16X1.5	G1/4"	10	12	14.5	33	16.5	31	19	24	19	720B-04I	O11.3X2.4	ZHD-14		
1CI-18-B06	M18X1.5	G3/8"	12	12	16.5	38	19	34.5	24	27	22	720B-06I	O15.3X2.4	ZHD-18		
1CI-22-B08	M22X1.5	G1/2"	15	14	21.5	49	22.5	38	27	32	27	720B-08I	O19.3X2.4	ZHD-22		
1CI-26-B08	M26X1.5	G1/2"	18	14	21.5	49	22	38	27	32	32	720B-08I	O19.3X2.4	ZHD-22		
1CI-30-B12	M30X2	G3/4"	22	16	24	56	28.5	45	36	41	36	720B-12I	O23.5X3.0	ZHD-27	16 轻系列 L	
1CI-36-B16	M36X2	G1"	28	18	30.5	71	33	50	41	50	41	720B-16I	O29.5X3.0	ZHD-33		
1CI-45-B20	M45X2	G1.1/4"	35	20	35.5	82	37	59	50	60	50	720B-20I	O38.5X3.0	ZHD-42		
1CI-52-B24	M52X2	G1.1/2"	42	22	40.5	93	41.5	64	55	70	60	720B-24I	O44.5X3.0	ZHD-48	63 重系列 S	
1DI-14-B04	M14X1.5	G1/4"	6	12	14.5	33	17.5	32	19	24	17	720B-04I	O11.3X2.4	ZHD-14		
1DI-16-B04	M16X1.5	G1/4"	8	12	14.5	33	17.5	32	19	24	19	720B-04I	O11.3X2.4	ZHD-14		
1DI-18-B06	M18X1.5	G3/8"	10	12	16.5	38	21	38	24	30	22	720B-06I	O15.3X2.4	ZHD-18		
1DI-20-B06	M20X1.5	G3/8"	12	12	16.5	38	21	38	24	30	24	720B-06I	O15.3X2.4	ZHD-18		
1DI-22-B08	M22X1.5	G1/2"	14	14	21.5	49	23.5	41	27	32	27	720B-08I	O19.3X2.4	ZHD-22		
1DI-24-B08	M24X1.5	G1/2"	16	14	21.5	49	23	41	27	32	30	720B-08I	O19.3X2.4	ZHD-22		
1DI-30-B12	M30X2	G3/4"	20	16	24	56	27.5	49	36	41	36	720B-12I	O23.5X3.0	ZHD-27		40 重系列 S
1DI-36-B16	M36X2	G1"	25	18	30.5	71	32.5	57	41	50	46	720B-16I	O29.5X3.0	ZHD-33		
1DI-42-B20	M42X2	G1.1/4"	30	20	35.5	82	38	65	50	60	50	720B-20I	O38.5X3.0	ZHD-42		
1DI-52-B24	M52X2	G1.1/2"	38	22	40.5	93	42.5	73	55	70	60	720B-24I	O44.5X3.0	ZHD-48		

注：如需带卡套及卡套螺母整套订货，则请在代号后加“RN”，如 1D1-36-B16RN。

Note: In case if you are interested to order the adapter in complete set with cutting ring and nut ,it is necessary to insert suffix "RN" after our part no., for example 1D1-36-B16RN.

DIN 卡套式管接头



美制JIC74° 锥密封
JIC 74° CONE SEALING

1CJ
1DJ

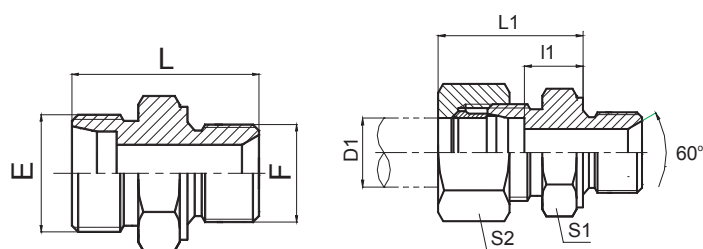
1CJ-RN
1DJ-RN

代号 PART NO.	螺纹 THREAD		管子外径 TUBE O.D.	尺寸 DIMENSIONS						压力等级 MPa
	E	F		D1	B	l1	L1	S1	S2	
1CJ-10-04LL	M10x1	7/16"X20	6	14	6.5	20	12	12	31.5 轻系列 L	
1CJ-12A-04LL	M12x1	7/16"X20	8	14	8.5	22	12	14		
1CJ-12-04	M12x1.5	7/16"X20	6	14	9	24	14	14		
1CJ-14-04	M14x1.5	7/16"X20	8	14	8	23	15	17		
1CJ-14-06	M14x1.5	9/16"X18	8	14.1	8	23	15	17		
1CJ-16-06	M16x1.5	9/16"X18	10	14.1	9	24	17	19		
1CJ-18-06	M18x1.5	9/16"X18	12	14.1	10	25	19	22		
1CJ-18-08	M18x1.5	3/4"X16	12	16.7	10	25	22	22		
1CJ-22-08	M22x1.5	3/4"X16	15	16.7	10.8	26	24	27		
1CJ-22-10	M22x1.5	7/8"X14	15	19.3	11	26	24	27		
1CJ-26-10	M26X1.5	7/8"X14	18	19.3	11.5	28	27	32		
1CJ-26-12	M26X1.5	1.1/16"X12	18	21.9	11.6	28	30	32		
1CJ-30-12	M30x2	1.1/16"X12	22	21.9	13.5	30	32	36		
1CJ-30D-12	M30X1.5	1.1/16"X12	22	21.9	13.5	30	32	36		
1CJ-30D-16	M30X1.5	1.5/16"X12	22	23.1	14.5	31	36	36		
1CJ-36-16	M36x2	1.5/16"X12	28	23.1	14.5	31	41	41		
1CJ-36D-12	M36X1.5	1.1/16"X12	28	21.9	14.5	31	41	41		
1CJ-36D-16	M36X1.5	1.5/16"X12	28	23.1	14.5	31	41	41		
1CJ-45-20	M45X2	1.5/8"X12	35	24.3	14.5	36	46	50		
1CJ-45D-20	M45X1.5	1.5/8"X12	35	24.3	15.5	37	46	50		
1CJ-52-20	M52X2	1.5/8"X12	42	24.3	16	39	55	60		
1CJ-52-24	M52X2	1.7/8"X12	42	27.5	16	39	55	60		
1DJ-14-04	M14x1.5	7/16"X20	6	14	11	26	14	14		
1DJ-16-04	M16x1.5	7/16"X20	8	14	13	28	17	19		
1DJ-16-06	M16x1.5	9/16"X18	8	14.1	12.9	28	17	34		
1DJ-18-04	M18x1.5	7/16"X20	10	14	12.5	29	19	22		
1DJ-18-06	M18x1.5	9/16"X18	10	14.1	12.5	29	19	22		
1DJ-20-06	M20x1.5	9/16"X18	12	14.1	14.5	31	22	24		
1DJ-20-08	M20x1.5	3/4"X16	12	16.7	14.3	31	22	24		
1DJ-22-08	M22x1.5	3/4"X16	14	16.7	16	34	24	27		
1DJ-24-08	M24x1.5	3/4"X16	16	16.7	15.5	34	27	30		
1DJ-24-10	M24x1.5	7/8"X14	16	19.3	15.5	34	27	30		
1DJ-30-12	M30x2	1.1/16"X12	20	21.9	17.5	39	32	36		
1DJ-36-12	M36x2	1.1/16"X12	25	21.9	19	43	38	46		
1DJ-36-16	M36x2	1.5/16"X12	25	23.1	19	43	38	46		
1DJ-42-20	M42x2	1.5/8"X12	30	24.3	20.5	47	46	50		
1DJ-52-24	M52X2	1.7/8"X12	38	27.5	23	54	55	60		

注：如需带卡套及卡套螺母整套订货，则请在代号后加“RN”，如 1DJ-20-18RN。

Note: In case if you are interested to order the adapter in complete set with cutting ring and nut, it is necessary to insert suffix "RN" after our part no., for example 1DJ-20-18RN.

DIN 卡套式管接头



公制螺纹60° 锥密封或
组合垫密封两用柱端
METRIC THREAD 60° CONE SEALING
OR BONDED SEAL STUD ENDS

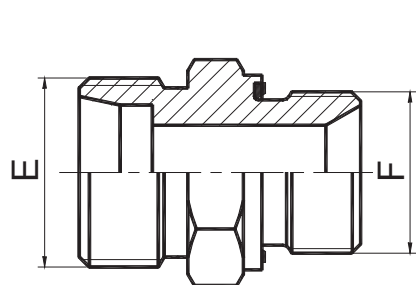
1CM
1DM

1CM-RN
1DM-RN

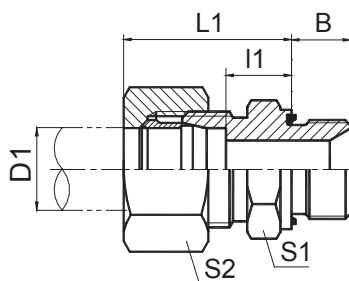
代号 PART NO.	螺纹 THREAD		管子外径 TUBE O.D.		尺寸 DIMENSIONS					压力等级 MPa
	E	F	D1		B	I1	L1	S1	S2	
1CM-12-10	M12X1.5	M10X1	6		8	8.5	23	14	14	31.5 轻系列 L
1CM-14-12	M14X1.5	M12X1.5	8		12	10	25	17	17	
1CM-14-18	M14X1.5	M18X1.5	8		12	11.5	26	24	17	
1CM-16-14	M16X1.5	M14X1.5	10		12	11	26	19	19	
1CM-16	M16X1.5	M16X1.5	10		12	12	27	22	19	
1CM-16-18	M16X1.5	M18X1.5	10		12	12.5	27	24	19	
1CM-16-22	M16X1.5	M22X1.5	10		14	14	29	27	19	
1CM-18-14	M18X1.5	M14X1.5	12		12	11	26	19	22	
1CM-18-16	M18X1.5	M16X1.5	12		12	12	27	22	22	
1CM-18	M18X1.5	M18X1.5	12		12	12.5	27	24	22	
1CM-18-22	M18X1.5	M22X1.5	12		14	14	29	27	22	
1CM-22-16	M22X1.5	M16X1.5	15		12	13	28	24	27	
1CM-22-18	M22X1.5	M18X1.5	15		12	13.5	29	24	27	
1CM-22	M22X1.5	M22X1.5	15		14	15	30	27	27	
1CM-26-18	M26X1.5	M18X1.5	18		12	14	30	27	32	
1CM-26-22	M26X1.5	M22X1.5	18		14	14.5	31	27	32	
1CM-30-22	M30X2	M22X1.5	22		14	16.5	33	32	36	
1CM-30-26	M30X2	M26X1.5	22		16	16.5	33	32	36	
1CM-30-27	M30X2	M27X2	22		16	18.5	35	32	36	
1CM-36-33	M36X2	M33X2	28		18	17.5	34	41	41	
1CM-45-42	M45X2	M42X2	35		20	17.5	39	50	50	
1CM-52-48	M52X2	M48X2	42		22	19	42	55	60	
1DM-14-12	M14X1.5	M12X1.5	6		12	13	28	17	17	
1DM-16-14	M16X1.5	M14X1.5	8		12	15	30	19	19	
1DM-18-16	M18X1.5	M16X1.5	10		12	15	31	22	22	
1DM-20-18	M20X1.5	M18X1.5	12		12	17	33	24	24	
1DM-20-22	M20X1.5	M22X1.5	12		14	17.5	34	27	24	
1DM-22-20	M22X1.5	M20X1.5	14		14	19	37	27	27	
1DM-24-18	M24X1.5	M18X1.5	16		12	18	36	27	30	
1DM-24-22	M24X1.5	M22X1.5	16		14	18.5	37	27	30	
1DM-30-27	M30X2	M27X2	20		16	20.5	42	32	36	
1DM-36-33	M36X2	M33X2	25		18	23	47	41	46	
1DM-42	M42X2	M42X2	30		20	23.5	50	50	50	
1DM-52-48	M52X2	M48X2	38		22	57	55	60		

注：如需带卡套及卡套螺母整套订货，则请在代号后加“RN”，如1DM-20-18RN。
Note: In case if you are interested to order the adapter in complete set with cutting ring and nut ,it is necessary to insert suffix "RN" after our part no., for example 1DM-20-18RN.

DIN 卡套式管接头



1CM-WD
1DM-WD



1CM-WD/RN
1DM-WD/RN

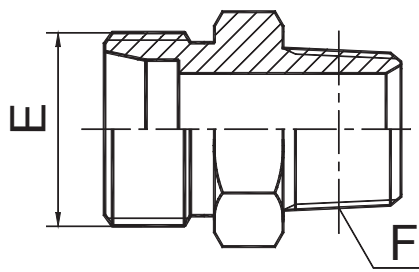
公制螺纹胶垫密封柱端
METRIC THREAD WITH
CAPTIVE SEAL

代号 PART NO.	螺纹 THREAD		管子外径 TUBE O.D.		尺寸 DIMENSIONS						压力等级 MPa
	E	F	D1		B	I1	L1	S1	S2		
1CM-12-10WD	M12X1.5	M10X1	6		8	8.5	23	14	14		31.5 轻系列 L
1CM-14-12WD	M14X1.5	M12X1.5	8		12	10	25	17	17		
1CM-16-12WD	M16X1.5	M12X1.5	10		12	11	25	17	19		
1CM-16-14WD	M16X1.5	M14X1.5	10		12	11	26	19	19		
1CM-16-18WD	M16X1.5	M18X1.5	10		12	12.5	27	24	19		
1CM-18-16WD	M18X1.5	M16X1.5	12		12	12.5	27	22	22		
1CM-18WD	M18X1.5	M18X1.5	12		12	12.5	27	24	22		
1CM-18-22WD	M18X1.5	M22X1.5	12		14	14	29	27	22		
1CM-22-18WD	M22X1.5	M18X1.5	15		12	13.5	29	24	27		
1CM-22WD	M22X1.5	M22X1.5	15		14	15	30	27	27		
1CM-26-22WD	M26X1.5	M22X1.5	18		14	14.5	31	27	32		
1CM-30-26WD	M30X2	M26X1.5	22		16	16.5	33	32	36		16 轻系列 L
1CM-30-27WD	M30X2	M27X2	22		16	16.5	33	32	36		
1CM-36-33WD	M36X2	M33X2	28		18	17.5	34	41	41		
1CM-45-42WD	M45X2	M42X2	35		20	17.5	39	50	50		
1CM-52-48WD	M52X2	M48X2	42		22	19	42	55	60		
1DM-14-12WD	M14X1.5	M12X1.5	6		12	13	28	17	17		63 重系列 S
1DM-16-14WD	M16X1.5	M14X1.5	8		12	15	30	19	19		
1DM-18-16WD	M18X1.5	M16X1.5	10		12	15	31	22	22		
1DM-20-18WD	M20X1.5	M18X1.5	12		12	17	33	24	24		
1DM-22-20WD	M22X1.5	M20X1.5	14		14	19	37	27	27		40 重系列 S
1DM-24-22WD	M24X1.5	M22X1.5	16		14	18.5	37	27	30		
1DM-30-27WD	M30X2	M27X2	20		16	20.5	42	32	36		
1DM-36-33WD	M36X2	M33X2	25		18	23	47	41	46		
1DM-42WD	M42X2	M42X2	30		20	23.5	50	50	50		
1DM-52-48WD	M52X2	M48X2	38		22	26	57	55	60		31.5重系列S

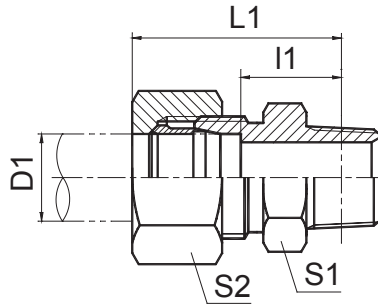
注：如需带卡套及卡套螺母整套订货，则请在代号后加“RN”，如1DM-20-18WD/RN。

Note: In case if you are interested to order the adapter in complete set with cutting ring and nut ,it is necessary to insert suffix "RN" after our part no., for example 1DM-20-18WD/RN.

DIN 卡套式管接头



1CN
1DN



1CN-RN
1DN-RN

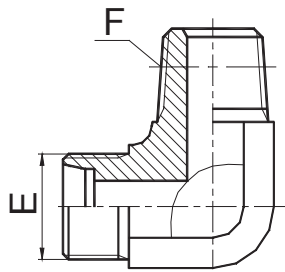
布锥管外螺纹
NPT MALE

代号 PART NO.	螺纹 THREAD		管子外径 TUBE O.D. D1	尺寸 DIMENSIONS				压力等级 MPa
	E	F		l1	L1	S1	S2	
1CN-08-02	M8X1	Z1/8"X27	4	14.4	24.4	11	10	10 特轻系列 LL
1CN-10-02LL	M10X1	Z1/8"X27	6	12.9	24.4	11	12	
1CN-12-02LL	M12X1	Z1/8"X27	8	13.9	25.4	12	14	
1CN-12-02	M12X1.5	Z1/8"X27	6	13.4	28.4	12	14	31.5 轻系列 L
1CN-12-04	M12X1.5	Z1/4"X18	6	17.2	32.2	17	14	
1CN-14-04	M14X1.5	Z1/4"X18	8	17.2	32.2	14	17	
1CN-16-04	M16X1.5	Z1/4"X18	10	18.2	33.2	17	19	
1CN-16-06	M16X1.5	Z3/8"X18	10	19.9	53.0	19	19	
1CN-18-04	M18X1.5	Z1/4"X18	12	19.2	34.2	19	22	
1CN-18-06	M18X1.5	Z3/8"X18	12	19.9	34.9	19	22	
1CN-18-08	M18X1.5	Z1/2"X14	12	21.4	36.4	22	22	
1CN-22-08	M22X1.5	Z1/2"X14	15	22.4	37.4	24	27	
1CN-22-20	M22X1.5	Z1.1/4"X11.5	15	29.8	37.4	46	27	
1CN-26-08	M26X1.5	Z1/2"X14	18	22.9	39.4	27	32	16 轻系列 L
1CN-26-12	M26X1.5	Z3/4"X14	18	22.4	38.9	30	32	
1CN-30-08	M30X2	Z1/2"X14	22	24.4	40.5	32	36	
1CN-30-12	M30X2	Z3/4"X14	22	24.4	40.9	32	36	
1CN-36-16	M36X2	Z1"X11.5	28	29.8	46.3	41	41	
1CN-36-20	M36X2	Z1.1/4"X11.5	28	31.3	46.3	46	41	
1CN-45-20	M45X2	Z1.1/4"X11.5	35	30.3	51.8	46	50	
1CN-52-20	M52X2	Z1.1/4"X11.5	42	31.8	55.8	55	60	
1CN-52-24	M52X2	Z1.1/2"X11.5	42	32.8	55.8	55	60	
1DN-14-04	M14X1.5	Z1/4"X18	6	22.2	37.2	17	17	
1DN-16-04	M16X1.5	Z1/4"X18	8	22.2	37.2	17	19	
1DN-18-04	M18X1.5	Z1/4"X18	10	21.7	38.2	19	22	
1DN-18-06	M18X1.5	Z3/8"X18	10	22.4	38.9	19	22	
1DN-20-04	M20X1.5	Z1/4"X18	12	23.7	40.2	22	24	
1DN-20-06	M20X1.5	Z3/8"X18	12	24.4	40.9	22	24	
1DN-20-08	M20X1.5	Z1/2"X14	12	25.9	42.4	22	24	
1DN-22-08	M22X1.5	Z1/2"X14	14	27.4	45.4	24	27	
1DN-24-08	M24X1.5	Z1/2"X14	16	26.9	45.4	27	30	
1DN-30-12	M30X2	Z3/4"X14	20	28.4	49.9	32	36	
1DN-36-12	M36X2	Z3/4"X14	25	30.9	34.0	41	46	
1DN-36-16	M36X2	Z1"X11.5	25	35.3	59.3	41	46	
1DN-42-16	M42X2	Z1"X11.5	30	35.8	59.3	46	46	
1DN-42-20	M42X2	Z1.1/4"X11.5	30	36.3	62.8	46	50	
1DN-52-24	M52X2	Z1.1/2"X11.5	38	39.8	70.8	55	60	

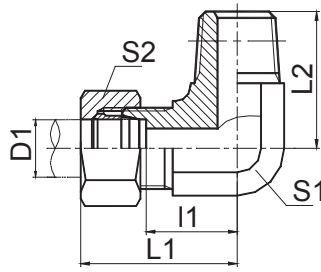
注：如需带卡套及卡套螺母整套订货，则请在代号后加“RN”，如10N-30-12RN。

Note: In case if you are interested to order the adapter in complete set with cutting ring and nut, it is necessary to insert suffix "RN" after our part no., for example 10N-30-12RN.

DIN 卡套式管接头



1CN9
1DN9



1CN9-RN
1DN9-RN

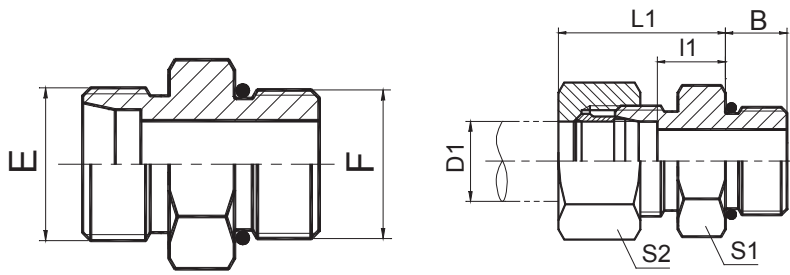
90° 弯布锥管外螺纹
90° ELBOW NPT MALE

代号 PART NO.	螺纹 THREAD		管子外径 TUBE O.D.		尺寸 DIMENSIONS					压力等级 MPa
	E	F	D1		L1	L2	S1	S2		
1CN9-12-02	M12X1.5	Z1/8"X27	6		13	28	21	11	14	31.5 轻系列 L
1CN9-12-04	M12X1.5	Z1/4"X18	6		15.5	30.5	25.5	14	14	
1CN9-14-04	M14X1.5	Z1/4"X18	8		15.5	30.5	25.5	14	17	
1CN9-16-06	M16X1.5	Z3/8"X18	10		17.5	32.5	29.5	16	19	
1CN9-18-04	M18X1.5	Z1/4"X18	12		19	34	28	19	22	
1CN9-18-06	M18X1.5	Z3/8"X18	12		19	34	31	19	22	
1CN9-18-08	M18X1.5	Z1/2"X14	12		21	36	36.7	22	22	
1CN9-22-06	M22X1.5	Z3/8"X18	15		22	37	32.5	22	27	
1CN9-22-08	M22X1.5	Z1/2"X14	15		22	37	36.7	22	27	
1CN9-26-08	M26X1.5	Z1/2"X14	18		25.5	42	40	27	32	16 轻系列 L
1CN9-26-12	M26X1.5	Z3/4"X14	18		25.5	42	44	27	32	
1CN9-30-12	M30X2	Z3/4"X14	22		29.3	45.8	45	30	36	
1CN9-30-16	M30X2	Z1"X11.5	22		32		50	33	36	
1CN9-36-16	M36X2	Z1"X11.5	28		33.3	49.8	51.5	36	41	
1CN9-45-20	M45X2	Z1.1/4"X11.5	35		39.2	60.7	63	48	50	
1CN9-52-24	M52X2	Z1.1/2"X11.5	42		44.8	67.8	65	55	60	
1DN9-14-04	M14X1.5	Z1/4"X18	6		17.5	32.5	25.5	14	17	63 重系列 S
1DN9-16-04	M16X1.5	Z1/4"X18	8		18.5	33.7	26.5	16	19	
1DN9-18-06	M18X1.5	Z3/8"X18	10		19.5	36	31	19	22	
1DN9-20-04	M20X1.5	Z1/4"X18	12		19.5	36	28	19	24	
1DN9-20-06	M20X1.5	Z3/8"X18	12		19.5	36	31	19	24	
1DN9-22-06	M22X1.5	Z3/8"X18	14		23	41	32.5	22	27	
1DN9-22-08	M22X1.5	Z1/2"X14	14		23	41	36.7	22	27	
1DN9-24-06	M24X1.5	Z3/8"X18	16		24	42.5	33.5	24	30	
1DN9-24-08	M24X1.5	Z1/2"X14	16		24	42.5	37.5	24	30	
1DN9-30-08	M30X2	Z1/2"X14	20		28	49.8	41	30	36	40 重系列 S
1DN9-30-12	M30X2	Z3/4"X14	20		28	49.8	45	30	36	
1DN9-36-12	M36X2	Z3/4"X14	25		32.8	56.8	49	36	46	
1DN9-36-16	M36X2	Z1"X11.5	25		32.8	56.8	51.5	36	46	
1DN9-42-16	M42X2	Z1"X11.5	30		36.2	62.7	54.5	41	50	
1DN9-42-20	M42X2	Z1.1/4"X11.5	30		36.2	62.7	54.5	41	50	
1DN9-52-20	M52X2	Z1.1/4"X11.5	38		45.8	76.8	65	55	60	
1DN9-52-24	M52X2	Z1.1/2"X11.5	38		45.8	76.8	65	55	60	

注：如需带卡套及卡套螺母整套订货，则请在代号后加“RN”，如1CN9-30-12RN。

Note: In case if you are interested to order the adapter in complete set with cutting ring and nut ,it is necessary to insert suffix "RN" after our part no. , for example 1CN9-30-12RN.

DIN 卡套式管接头



美制螺纹O形圈密封柱端
UN、UNF THREAD STUD ENDS
WITH O-RING SEALING

1CO
1DO

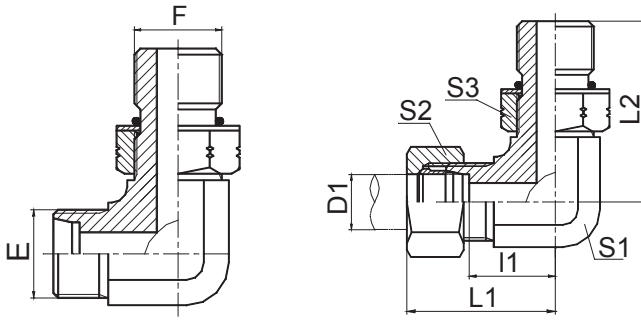
1CO-RN
1DO-RN

代号 PART NO.	螺纹 THREAD		管子外径 TUBE O.D.		尺寸 DIMENSIONS					压力等级 MPa
	E	F	D1		B	l1	L1	S1	S2	
1CO-14-04	M14X1.5	7/16"X20	8		9	10	25	17	17	31.5 轻系列 L
1CO-16-04	M16X1.5	7/16"X20	10		9	11	26	17	19	
1CO-18-06	M18X1.5	9/16"X18	12		10	11	26	19	22	
1CO-18-08	M18X1.5	3/4"X16	12		11	13	28	24	22	
1CO-18-10	M18X1.5	7/8"X14	12		12.7	14.3	29	27	22	
1CO-22-08	M22X1.5	3/4"X16	15		11	14	29	24	27	
1CO-22-10	M22X1.5	7/8"X14	15		12.7	15.3	30	27	27	
1CO-22-12	M22X1.5	1.1/16"X12	15		15.09	11.91	30	32	27	
1CO-26-08	M26X1.5	3/4"X16	18		11	14.5	31	27	32	
1CO-26-10	M26X1.5	7/8"X14	18		12.7	14.8	31	27	32	
1CO-30-08	M30X2	3/4"X16	18		11.13	13.87	33	32	36	
1CO-30-10	M30X2	7/8"X14	22		12.7	16.8	33	32	36	
1CO-30-12	M30X2	1.1/16"X12	22		15	16.5	33	32	36	
1CO-30-16	M30X2	1.5/16"X12	22		15	17.5	34	41	36	
1CO-36-12	M36X2	1.1/16"X12	28		15.09	14.41	34	41	41	
1CO-36-16	M36X2	1.5/16"X12	28		15	17.5	34	41	41	
1CO-45-16	M45X2	1.5/16"X12	35		15	17.5	39	46	50	
1CO-45-20	M45X2	1.5/8"X12	35		15.09	16.41	39	50	50	
1CO-52-20	M52X2	1.5/8"X12	42		15.09	15.91	42	55	60	
1DO-16-04	M16X1.5	7/16"X20	8		9	15	30	17	19	63 重系列 S
1DO-18-06	M18X1.5	9/16"X18	10		10	14.5	31	19	22	
1DO-20-06	M20X1.5	9/16"X18	12		10	14.5	31	22	24	
1DO-20-08	M20X1.5	3/4"X16	12		11	17.5	34	24	24	40 重系列 S
1DO-24-08	M24X1.5	3/4"X16	16		11	15.5	34	24	30	
1DO-24-10	M24X1.5	7/8"X14	16		12.7	18.8	37	27	30	
1DO-30-08	M30X2	3/4"X16	20		11	20.5	42	32	36	
1DO-30-10	M30X2	7/8"X14	20		12.7	20.8	42	32	36	
1DO-30-12	M30X2	1.1/16"X12	20		15	20.5	42	32	36	
1DO-36-12	M36X2	1.1/16"X12	25		15.09	19.91	47	41	46	
1DO-36-16	M36X2	1.5/16"X12	25		15	23	47	41	46	
1DO-42-16	M42X2	1.5/16"X12	30		15	23.5	50	46	50	
1DO-42-20	M42X2	1.5/8"X12	30		15	23.5	50	50	50	
1DO-52-20	M52X2	1.5/8"X12	38		15.09	22.9	53.9	55	60	31.5重系列S

注：如需带卡套及卡套螺母整套订货，则请在代号后加“RN”，如1C9-30RN。

Note: In case if you are interested to order the adapter in complete set with cutting ring and nut ,it is necessary to insert suffix "RN" after our part no., for example 1C9-30RN.

DIN 卡套式管接头



90° 弯美制螺纹可调向O形圈密封柱端
 90° ELBOW UN、UNF THREAD ADJUSTABLE
 STUD ENDS WITH O-RING SEALING

1CO9-OG
1DO9-OG

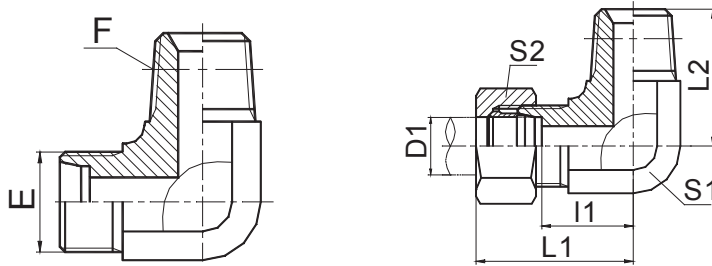
1CO9-OG/RN
1DO9-OG/RN

代号 PART NO.	螺纹 THREAD		管子外径 TUBE O.D. D1	尺寸 DIMENSIONS						压力等级 MPa
	E	F		l1	L1	L2	S1	S2	S3	
1CO9-12-04OG	M12X1.5	7/16"X20	6	13	28	27.2	11	14	17	31.5 轻系列 L
1CO9-14-06OG	M14X1.5	9/16"X18	8	15.5	30.5	31.8	14	17	19	
1CO9-16-06OG	M16X1.5	9/16"X18	10	17.5	32.5	33.3	16	19	19	
1CO9-18-08OG	M18X1.5	3/4"X16	12	19	34	37.5	19	22	24	
1CO9-22-10OG	M22X1.5	7/8"X14	15	22	37	44	22	27	27	
1CO9-22-08OG	M22X1.5	3/4"X16	15	22	37	39.5	22	27	24	
1CO9-26-12OG	M26X1.5	1.1/16"X12	18	25.5	42	51	27	32	32	
1CO9-30-12OG	M30X2	1.1/16"X12	22	29.3	45.8	53.5	30	36	32	16 轻系列 L
1CO9-36-12OG	M36X2	1.1/16"X12	28	33.5	47.8	57.5	36	41	41	
1CO9-36-16OG	M36X2	1.5/16"X12	28	33.3	49.8	57.5	36	41	41	
1CO9-45-20OG	M45X2	1.5/8"X12	35	39.2	60.7	63	48	50	50	
1CO9-52-24OG	M52X2	1.7/8"X12	42	44.8	67.8	70.5	55	60	55	
1DO9-14-04OG	M14X1.5	7/16"X20	6	17.5	32.5	30	14	17	17	63 重系列 S
1DO9-16-06OG	M16X1.5	9/16"X18	8	18.7	33.7	33.3	16	19	19	
1DO9-18-06OG	M18X1.5	9/16"X18	10	19.5	36	33.5	19	22	19	
1DO9-18-08OG	M18X1.5	3/4"X16	10	19.5	36	37.5	19	22	24	
1DO9-20-08OG	M20X1.5	3/4"X16	12	19.5	36	37.5	19	24	24	
1DO9-22-10OG	M22X1.5	7/8"X14	14	23	41	44	22	27	27	
1DO9-24-10OG	M24X1.5	7/8"X14	16	24	42.5	46.5	24	30	27	40 重系列 S
1DO9-30-12OG	M30X2	1.1/16"X12	20	28.3	49.8	53.5	30	36	32	
1DO9-36-16OG	M36X2	1.5/16"X12	25	32.8	56.8	57.5	36	46	41	
1DO9-42-20OG	M42X2	1.5/8"X12	30	36.2	62.7	59.5	41	50	50	
1DO9-52-24OG	M52X2	1.7/8"X12	38	45.8	76.8	70.5	55	60	55	31.5重系列S

注：如需带卡套及卡套螺母整套订货，则请在代号后加“RN”，如1CO9-30-120G/RN。

Note: In case if you are interested to order the adapter in complete set with cutting ring and nut ,it is necessary to insert suffix "RN" after our part no., for example 1CO9-30-120G/RN.

DIN 卡套式管接头



90° 弯英锥管外螺纹
90° ELBOW BSPT MALE

1CT9-SP
1DT9-SP

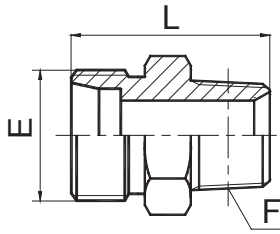
1CT9-SP/RN
1DT9-SP/RN

代号 PART NO.	螺纹 THREAD		管子外径 TUBE O.D.		尺寸 DIMENSIONS					压力等级 MPa
	E	F	D1		l1	L1	L2	S1	S2	
1CT9-12-02SP	M12X1.5	R1/8"X28	6		13	28	21	11	14	31.5 轻系列 L
1CT9-12-04SP	M12X1.5	R1/4"X19	6		15.5	30.5	25.5	14	14	
1CT9-14-02SP	M14X1.5	R1/8"X28	8		15.5	30.5	23.5	14	17	
1CT9-14-04SP	M14X1.5	R1/4"X19	8	8	15.5	30.5	25.5	14	17	
1CT9-16-04SP	M16X1.5	R1/4"X19	10		17.5	32.5	26.5	16	19	
1CT9-16-06SP	M16X1.5	R3/8"X19	10	10	17.5	32.5	28.5	16	19	
1CT9-16-08SP	M16X1.5	R1/2"X14	10		21	36	36	22	19	
1CT9-18-04SP	M18X1.5	R1/4"X19	12	12	21	34	28	19	22	
1CT9-18-06SP	M18X1.5	R3/8"X19	12		19	34	30.5	19	22	
1CT9-18-08SP	M18X1.5	R1/2"X14	12		21	36	36	22	22	
1CT9-22-06SP	M22X1.5	R3/8"X19	15	15	22	37	32.5	22	27	
1CT9-22-08SP	M22X1.5	R1/2"X14	15	15	22	37	36	22	27	
1CT9-22-12SP	M22X1.5	R3/4"X14	15		25.5	40.5	43.5	27	27	
1CT9-26-08SP	M26X1.5	R1/2"X14	18	18	25.5	42	39.5	27	32	
1CT9-26-12SP	M26X1.5	R3/4"X14	18	18	25.5	42	43.5	27	32	
1CT9-30-12SP	M30X2	R3/4"X14	22	22	29.5	45.8	45.3	30	36	
1CT9-30-16SP	M30X2	R1"X11	22		31.5	48	50	33	36	
1CT9-36-16SP	M36X2	R1"X11	28	28	33.3	49.8	52	36	41	
1CT9-36-20SP	M36X2	R1.1/4"X11	28		36.2	52.7	57	41	41	
1CT9-45-20SP	M45X2	R1.1/4"X11	35	35	39.2	60.7	61	48	50	
1CT9-52-24SP	M52X2	R1.1/2"X11	42	42	44.8	67.8	68	55	60	
1DT9-14-04SP	M14X1.5	R1/4"X19	6	6	17.5	32.5	25.5	14	17	
1DT9-16-04SP	M16X1.5	R1/4"X19	8		18.7	33.7	26.5	16	19	
1DT9-18-06SP	M18X1.5	R3/8"X19	10		19.5	36	30.5	19	22	
1DT9-20-04SP	M20X1.5	R1/4"X19	12		19.5	36	28	19	24	
1DT9-20-06SP	M20X1.5	R3/8"X19	12		19.5	36	30.5	19	24	
1DT9-22-06SP	M22X1.5	R3/8"X19	14		23	41	32.5	22	27	
1DT9-22-08SP	M22X1.5	R1/2"X14	14		23	41	36	22	27	
1DT9-24-06SP	M24X1.5	R3/8"X19	16		24	42.5	33.5	24	30	
1DT9-24-08SP	M24X1.5	R1/2"X14	16		24	42.5	37.3	24	30	
1DT9-30-08SP	M30X2	R1/2"X14	20		28.3	49.8	41	30	36	
1DT9-30-12SP	M30X2	R3/4"X14	20		28.3	49.8	45.3	30	36	
1DT9-36-12SP	M36X2	R3/4"X14	25		33.3	57.3	52	36	46	
1DT9-36-16SP	M36X2	R1"X11	25		32.8	56.8	52.5	36	46	
1DT9-42-16SP	M42X2	R1"X11	30		36.2	62.7	56.5	41	50	
1DT9-42-20SP	M42X2	R1.1/4"X11	30		36.2	62.7	57	41	50	
1DT9-52-20SP	M52X2	R1.1/4"X11	38		45.8	76.8	67	55	60	
1DT9-52-24SP	M52X2	R1.1/2"X11	38		45.8	76.8	68	55	60	

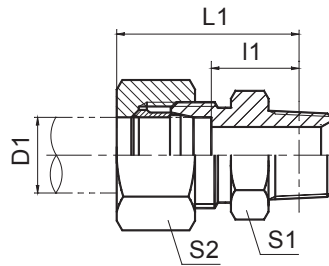
注：如需带卡套及卡套螺母整套订货，则请在代号后加“RN”，如1CT9-30-12SP/RN。

Note: In case if you are interested to order the adapter in complete set with cutting ring and nut ,it is necessary to insert suffix "RN" after our part no., for example 1CT9-30-12SP/RN.

DIN 卡套式管接头



1CT-SP
1DT-SP



1CT-SP/RN
1DT-SP/RN

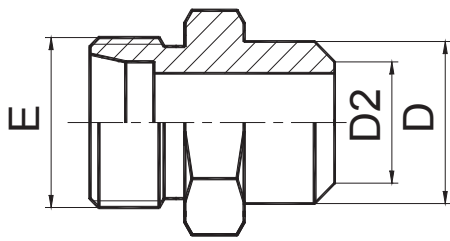
英锥管外螺纹
BSPT MALE

代号 PART NO.	螺纹 THREAD		管子外径 TUBE O.D.	尺寸 DIMENSIONS					压力等级 MPa
	E	F	D	l1	L1	S1	S2		
1CT-12-02SP	M12x1.5	R1/8"x28	6	13	28	12	14		31.5 轻系列 L
1CT-12-04SP	M12x1.5	R1/4"x19	8	8		14	14		
1CT-14-04SP	M14x1.5	R1/4"x19	8	16.5	31.5	14	17		
1CT-14-06SP	M14x1.5	R3/8"x19	8	17.6	32.6	19	17		
1CT-16-04SP	M16x1.5	R1/4"x19	10	17.5	32.5	17	19		
1CT-16-06SP	M16x1.5	R3/8"x19	10	18.6	33.6	19	19		
1CT-16-08SP	M16x1.5	R1/2"x14	10	21.8	36.8	22	19		
1CT-16-12SP	M16x1.5	R3/4"x14	10	21.5	36.5	30	19		
1CT-18-04SP	M18x1.5	R1/4"x19	12	18.5	33.5	19	22		
1CT-18-06SP	M18x1.5	R3/8"x19	12	18.6	33.6	19	22		
1CT-18-08SP	M18x1.5	R1/2"x14	12	21.8	36.8	22	22		
1CT-22-08SP	M22x1.5	R1/2"x14	15	22.8	37.8	24	27		
1CT-26-08SP	M26x1.5	R1/2"x14	18	23.3	39.8	27	32		
1CT-26-12SP	M26x1.5	R3/4"x14	18	22	38.5	30	32		
1CT-30-12SP	M30x2	R3/4"x14	22	24	40.5	32	36		
1CT-36-16SP	M36x2	R1"x11	28	29.6	46.1	38	41		
1CT-36-20SP	M36x2	R1.1/4"x11	28	29.3	45.8	46	41		
1CT-45-16SP	M45x2	R1"x11	35	29.6	51.1	46	50		
1CT-45-20SP	M45x2	R1.1/4"x11	35	28.3	49.8	46	50		
1CT-52-20SP	M52x2	R1.1/4"x11	42	29.8	52.8	55	60		
1CT-52-24SP	M52x2	R1.1/2"x11	42	29.8	52.8	55	60		
1DT-14-04SP	M14x1.5	R1/4"x19	6	13	36.5	17	17		
1DT-16-04SP	M16x1.5	R1/4"x19	8	21.5	36.5	17	19		
1DT-18-04SP	M18x1.5	R1/4"x19	10	21	37.5	19	22		
1DT-20-04SP	M20x1.5	R1/4"x19	12	23	39.5	22	24		
1DT-20-06SP	M20x1.5	R3/8"x19	12	23.1	39.6	22	24		
1DT-22-06SP	M22x1.5	R3/8"x19	14	24.6	42.6	24	27		
1DT-22-08SP	M22x1.5	R1/2"x14	14	27.8	45.8	24	27		
1DT-24-06SP	M24x1.5	R3/8"x19	16	24.1	42.6	27	30		
1DT-24-08SP	M24x1.5	R1/2"x14	16	27.3	45.8	27	30		
1DT-30-12SP	M30x2	R3/4"x14	20	28	49.5	32	36		
1DT-36-12SP	M36x2	R3/4"x14	25	29.5	53.5	38	46		
1DT-36-16SP	M36x2	R1"x11	25	34.1	58.1	38	46		
1DT-42-16SP	M42x2	R1"x11	30	35.6	62.1	46	50		
1DT-42-20SP	M42x2	R1.1/4"x11	30	34.3	60.8	46	50		
1DT-52-20SP	M52x2	R1.1/4"x11	38	36.8	67.8	55	60		
1DT-52-24SP	M52x2	R1.1/2"x11	38	36.8	67.8	55	60		

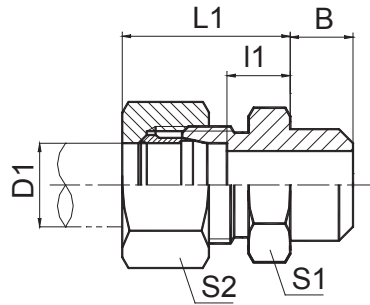
注：如需带卡套及卡套螺母整套订货，则请在代号后加“RN”，如 1DT-22-08SP/RN。

Note: In case if you are interested to order the adapter in complete set with cutting ring and nut, it is necessary to insert suffix "RN" after our part no., for example 1DT-22-08SP/RN.

DIN 卡套式管接头



1CW
1DW



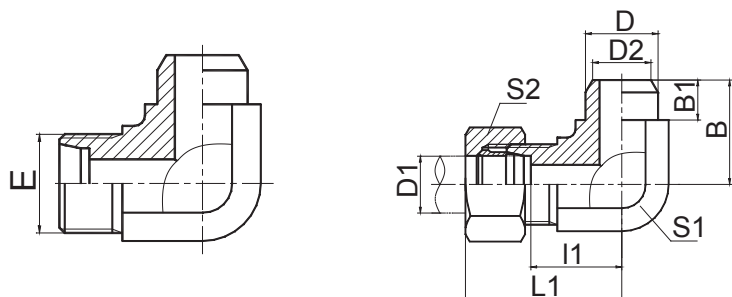
1CW-RN
1DW-RN

焊接接头
WELD FITTINGS

代号 PART NO.	螺纹 THREAD		管子外径 TUBE O.D.		尺寸 DIMENSIONS						压力等级 MPa
	E		D1	D2	B	D	I1	L1	S1	S2	
1CW-12-06	M12x1.5		6	6	7	10	7	22	12	14	31.5 轻系列 L
1CW-14-08	M14x1.5		8	8	8	12	8	23	14	17	
1CW-16-10	M16x1.5		10	10	8	14	9	24	17	19	
1CW-18-12	M18x1.5		12	12	8	16	10	25	19	22	
1CW-22-15	M22x1.5		15	15	10	19	11	26	22	27	
1CW-26-18	M26x1.5		18	18	10	22	11.5	28	27	32	
1CW-26-22	M26x1.5		18	22	10	27	13.5	28	27	32	16 轻系列 L
1CW-30-22	M30x2		22	22	12	27	13.5	30	32	36	
1CW-30-25	M30x2		22	25	12	31	13.5	30	32	36	
1CW-36-28	M36x2		28	28	12	32	16.5	33	38	41	
1CW-45-35	M45x2		35	35	14	40	14.5	36	46	50	
1CW-52-42	M52x2		42	42	16	46	16	39	55	60	63 重系列 S
1DW-14-06	M14x1.5		6	6	7	11	11	26	14	17	
1DW-16-08	M16x1.5		8	8	8	13	13	28	17	19	
1DW-18-10	M18x1.5		10	10	8	15	12.5	29	19	22	
1DW-20-12	M20x1.5		12	12	10	17	14.5	31	22	24	
1DW-22-14	M22x1.5		14	14	10	19	16	34	24	27	
1DW-24-16	M24x1.5		16	16	10	21	15.5	34	27	30	
1DW-30-20	M30x2		20	20	12	26	17.5	39	32	36	
1DW-36-25	M36x2		25	25	12	31	20	44	41	46	
1DW-42-30	M42x2		30	30	14	36	20.5	47	46	50	40 重系列 S
1DW-52-38	M52x2		38	38	16	44	23	54	55	60	

注：如需带卡套及卡套螺母整套订货，则请在代号后加“RN”，如1C9-30RN。

Note: In case if you are interested to order the adapter in complete set with cutting ring and nut ,it is necessary to insert suffix "RN" after our part no., for example 1C9-30RN.



90° 焊接接头
90° WELD FITTINGS

1CW9
1DW9

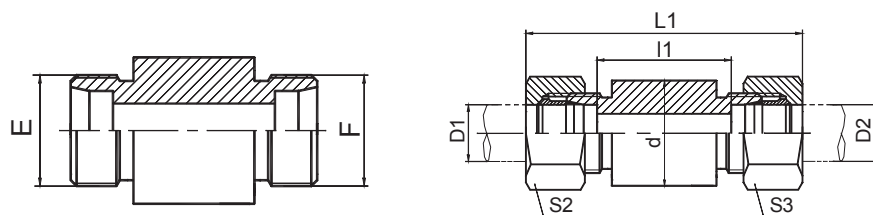
1CW9-RN
1DW9-RN

代号 PART NO.	螺纹 THREAD		管子外径 TUBE O.D.		尺寸 DIMENSIONS							压力等级 MPa
	E		D1	D2	B	B1	D	I1	L1	S1	S2	
1CW9-12-06	M12x1.5		6	6	15	7	10	13	28	11	14	31.5 轻系列 L
1CW9-14-08	M14x1.5		8	8	18.5	8	12	15.5	30.5	14	17	
1CW9-16-10	M16x1.5		10	10	19.5	8	14	17.5	32.5	16	19	
1CW9-18-12	M18x1.5		12	12	21	8	16	19	34	19	22	
1CW9-22-15	M22x1.5		15	15	25.5	10	19	22	37	22	27	
1CW9-26-18	M26x1.5		18	18	28	10	22	25.5	42	27	32	16 轻系列 L
1CW9-26-22	M26x1.5		18	22	28	10	27	25.5	42	27	32	
1CW9-30-22	M30x2		22	22	32	12	27	29.3	45.8	30	36	
1CW9-30-25	M30x2		22	25	32	12	31	29.3	45.8	30	36	
1CW9-36-28	M36x2		28	28	35.5	12	32	36	52.8	36	41	
1CW9-45-35	M45x2		35	35	45	14	40	39.2	60.7	48	50	63 重系列 S
1CW9-52-42	M52x2		42	42	48.5	16	46	40.5	63.5	50	60	
1DW9-14-06	M14x1.5		6	6	17.5	7	11	17.5	32.5	14	17	
1DW9-16-08	M16x1.5		8	8	19.5	8	13	18.7	33.7	16	19	
1DW9-18-10	M18x1.5		10	10	21	8	15	19.5	36	19	22	
1DW9-20-12	M20x1.5		12	12	23	10	17	19.5	36	19	24	40 重系列 S
1DW9-22-14	M22x1.5		14	14	25.5	10	19	23	41	22	27	
1DW9-24-16	M24x1.5		16	16	26.5	10	21	24	42.5	24	30	
1DW9-30-20	M30x2		20	20	32	12	26	28	49.5	30	36	
1DW9-36-25	M36x2		25	25	35.5	12	31	32.8	56.8	36	46	
1DW9-42-30	M42x2		30	30	39.5	14	36	36.2	62.7	41	50	31.5重系列S
1DW9-52-38	M52x2		38	38	48.5	16	44	41.5	72.5	50	60	

注：如需带卡套及卡套螺母整套订货，则请在代号后加“RN”，如1DW9-20-12RN。

Note: In case if you are interested to order the adapter in complete set with cutting ring and nut, it is necessary to insert suffix "RN" after our part no., for example 1DW9-20-12RN.

DIN 卡套式管接头



过板接头
STRAIGHT BULKHEAD
FITTINGS

1C-Y
1D-Y

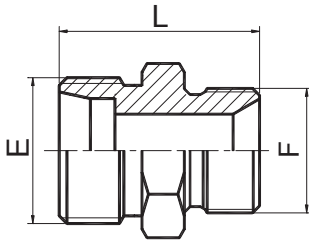
1C-Y/RN
1D-Y/RN

代号 PART NO.	螺纹 THREAD		管子外径 TUBE O.D.		尺寸 DIMENSIONS					压力等级 MPa
	E	F	D1	D2	l1	L1	d	S2,S3		
1C-12Y	M12X1.5	M12X1.5	6	6	56	85	18	14	31.5 轻系列 L	
1C-14Y	M14X1.5	M14X1.5	8	8	56	85	20	17		
1C-16Y	M16X1.5	M16X1.5	10	10	58	87	22	19		
1C-18Y	M18X1.5	M18X1.5	12	12	58	87	25	22		
1C-22Y	M22X1.5	M22X1.5	15	15	70	100	28	27		
1C-26Y	M26X1.5	M26X1.5	18	18	69	101	32	32		
1C-30Y	M30X2	M30X2	22	22	73	105	36	36	16 轻系列 L	
1C-36Y	M36X2	M36X2	28	28	73	106	40	41		
1C-45Y	M45X2	M45X2	35	35	71	114	50	50		
1C-52Y	M52X2	M52X2	42	42	70	115	60	60		
1D-14Y	M14X1.5	M14X1.5	6	6	60	89	20	17	63 重系列 S	
1D-16Y	M16X1.5	M16X1.5	8	8	60	89	22	19		
1D-18Y	M18X1.5	M18X1.5	10	10	59	91	25	22		
1D-20Y	M20X1.5	M20X1.5	12	12	59	91	28	24		
1D-22Y	M22X1.5	M22X1.5	14	14	72	107	30	27	40 重系列 S	
1D-24Y	M24X1.5	M24X1.5	16	16	71	107	35	30		
1D-30Y	M30X2	M30X2	20	20	71	114	38	36		
1D-36Y	M36X2	M36X2	25	25	72	120	45	46		
1D-42Y	M42X2	M42X2	30	30	73	126	50	50		
1D-52Y	M52X2	M52X2	38	38	72	133	60	60	31.5 重系列S	

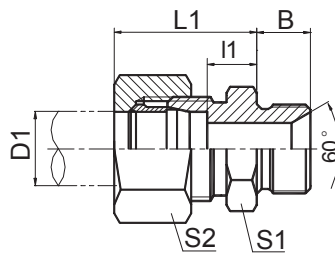
注：如需带卡套及卡套螺母整套订货，则请在代号后加“RN”，如1C9-30RN。

Note: In case if you are interested to order the adapter in complete set with cutting ring and nut ,it is necessary to insert suffix "RN" after our part no., for example 1C9-30RN.

DIN 卡套式管接头



1DB



1DB-RN

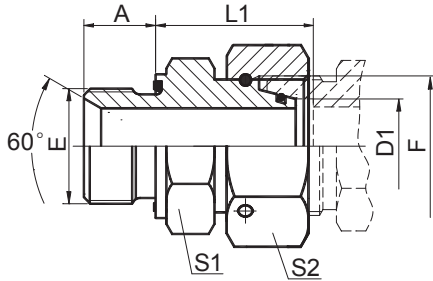
英管螺纹 60° 锥密封或
组合垫密封两用柱端
BSP THREAD 60° CONE SEALING
OR BONDED SEAL STUD ENDS

代号	螺纹 THREAD		管子外径 TUBE O.D.	尺寸 DIMENSIONS						压力等级
PART NO.	E	F	D1	B	l1	L1	L	S1	S2	MPa
1DB-14-04	M14X1.5	G1/4"X19	6	12	13	28	30	19	17	63 重系列 S
1DB-16-04	M16X1.5	G1/4"X19	8	12	13	28	32	19	19	
1DB-16-06	M16X1.5	G3/8"X19	8	13.5	15	30	33.5	22	19	
1DB-18-04	M18X1.5	G1/4"X19	10	12	12.5	29	32	19	22	
1DB-18-06	M18X1.5	G3/8"X19	10	13.5	14.5	31	33.5	22	22	
1DB-18-08	M18X1.5	G1/2"X14	10	16	14.5	31	36	27	22	
1DB-20-04	M20X1.5	G1/4"X19	12	12	14.5	31	34	22	24	
1DB-20-06	M20X1.5	G3/8"X19	12	13.5	14.5	31	35.5	22	24	
1DB-20-08	M20X1.5	G1/2"X14	12	16	14.5	31	38	27	24	
1DB-22-08	M22X1.5	G1/2"X14	14	16	16	34	40	27	27	
1DB-24-06	M24X1.5	G3/8"X19	16	13.5	15.5	34	37.5	27	30	40 重系列 S
1DB-24-08	M24X1.5	G1/2"X14	16	16	15.5	34	40	27	30	
1DB-24-12	M24X1.5	G3/4"X14	16	18.5	17.5	36	44.5	32	30	
1DB-30-12	M30X2	G3/4"X14	20	18.5	17.5	39	48.5	32	36	
1DB-30-08	M30X2	G1/2"X14	20	16	17.5		44	32	36	
1DB-36-08	M36X2	G1/2"X14	25	16	19	43	48	38	46	
1DB-36-12	M36X2	G3/4"X14	25	18.5	19	43	50.5	38	46	
1DB-36-16	M36X2	G1"X11	25	20.5	20	44	52.5	41	46	
1DB-42-20	M42X2	G1.1/4"X11	30	20.5	21.5	48	54.5	50	50	31.5 重系列 S
1DB-52-24	M52X2	G1.1/2"X11	38	23	23	54	62	55	60	

注：如需带卡套及卡套螺母整套订货，则请在代号后加“RN”，如 1DB-20-08RN。

Note: In case if you are interested to order the adapter in complete set with cutting ring and nut, it is necessary to insert suffix "RN" after our part no., for example 1DB-20-08RN.

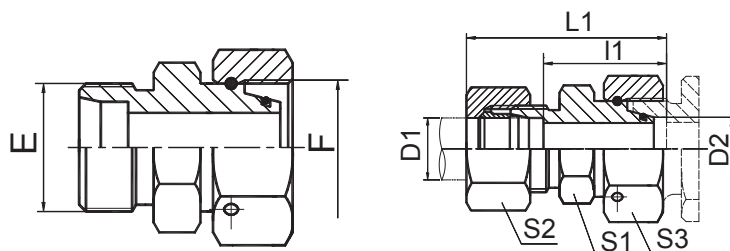
DIN 卡套式管接头



英管螺纹胶垫密封柱端
BSP THREAD WITH CAPTIVE SEAL

2BC-WD
2BD-WD

代号 PART NO.	螺纹 THREAD		管子外径 TUBE O.D.		尺寸 DIMENSIONS				压力等级 MPa
	E	F	D1		A	L1	S1	S2	
2BC-02-12WD	G1/8"X28	M12X1.5	6		8	24.5	14	14	31.5 轻系列 L
2BC-04-14WD	G1/4"X19	M14X1.5	8		12	29.5	19	17	
2BC-04-16WD	G1/4"X19	M16X1.5	10		12	27.5	19	19	
2BC-06-18WD	G3/8"X19	M18X1.5	12		12	34	22	22	
2BC-08-22WD	G1/2"X14	M22X1.5	15		14	32	27	27	
2BC-08-26WD	G1/2"X14	M26X1.5	18		14	31.5	27	32	
2BC-12-30WD	G3/4"X14	M30X2	22		16	32.5	32	36	16 轻系列 L
2BC-16-36WD	G1"X11	M36X2	28		18	35	41	41	
2BC-20-45WD	G1.1/4"X11	M45X2	35		20	42.5	50	50	
2BC-24-52WD	G1.1/2"X11	M52X2	42		22	46.5	55	60	
2BD-04-14WD	G1/4"X19	M14X1.5	6		12	27	19	17	63 重系列 S
2BD-04-16WD	G1/4"X19	M16X1.5	8		12	29.5	19	19	
2BD-06-18WD	G3/8"X19	M18X1.5	10		12	32	22	22	
2BD-06-20WD	G3/8"X19	M20X1.5	12		12	34	22	24	
2BD-08-22WD	G1/2"X14	M22X1.5	14		14	36.5	27	27	
2BD-08-24WD	G1/2"X14	M24X1.5	16		14	37	27	30	40 重系列 S
2BD-12-30WD	G3/4"X14	M30X2	20		16	43	32	36	
2BD-16-36WD	G1"X11	M36X2	25		18	48	41	46	
2BD-20-42WD	G1.1/4"X11	M42X2	30		20	51	50	50	
2BD-24-52WD	G1.1/2"X11	M52X2	38		22	60	55	60	31.5重系列S



2C

2C-RN

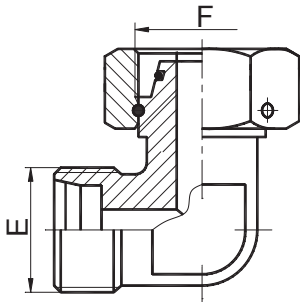
外螺纹内螺纹转换接头
REDUCER TUBE ADAPTOR
WITH SWIVEL NUT

代号 PART NO.	螺纹 THREAD		管子外径 TUBE O.D.		尺寸 DIMENSIONS					压力等级 MPa
	E	F	D1	D2	l1	L1	S1	S2	S3	
2C-12-14	M12X1.5	M14X1.5	6	8	23.5	38	12	14	17	31.5 轻系列 L
2C-12-16	M12X1.5	M16X1.5	6	10	25	40	14	14	19	
2C-14-16	M14X1.5	M16X1.5	8	10	25	40	14	17	19	
2C-12-18	M12X1.5	M18X1.5	6	12	25	40	17	14	22	
2C-14-18	M14X1.5	M18X1.5	8	12	25	40	17	17	22	
2C-16-18	M16X1.5	M18X1.5	10	12	26	41	17	19	22	
2C-12-22	M12X1.5	M22X1.5	6	15	28.5	43	19	14	27	
2C-14-22	M14X1.5	M22X1.5	8	15	28.5	43	19	17	27	
2C-16-22	M16X1.5	M22X1.5	10	15	29.5	44	19	19	27	
2C-18-22	M18X1.5	M22X1.5	12	15	29.5	44	19	22	27	
2C-12-26	M12X1.5	M26X1.5	6	18	28	43	24	14	32	
2C-22-26	M22X1.5	M26X1.5	15	18	30	45	24	27	32	
2C-12-30	M12X1.5	M30X2	6	22	32	47	27	14	36	
2C-14-30	M14X1.5	M30X2	8	22	32	47	27	17	36	
2C-16-30	M16X1.5	M30X2	10	22	33	48	27	19	36	
2C-18-30	M18X1.5	M30X2	12	22	33	48	27	22	36	
2C-22-30	M22X1.5	M30X2	15	22	34	49	27	27	36	
2C-26-30	M26X1.5	M30X2	18	22	33.5	50	27	32	36	
2C-12-36	M12X1.5	M36X2	6	28	34	49	36	14	41	
2C-14-36	M14X1.5	M36X2	8	28	34	49	36	17	41	
2C-16-36	M16X1.5	M36X2	10	28	35	50	36	19	41	
2C-18-36	M18X1.5	M36X2	12	28	35	50	36	22	41	
2C-22-36	M22X1.5	M36X2	15	28	36	51	36	27	41	
2C-26-36	M26X1.5	M36X2	18	28	35.5	52	36	32	41	
2C-30-36	M30X2	M36X2	22	28	37.5	54	36	36	41	
2C-12-45	M12X1.5	M45X2	6	35	37	52	41	14	50	
2C-14-45	M14X1.5	M45X2	8	35	37	52	41	17	50	
2C-16-45	M16X1.5	M45X2	10	35	38	53	41	19	50	
2C-18-45	M18X1.5	M45X2	12	35	38	53	41	22	50	
2C-22-45	M22X1.5	M45X2	15	35	39	54	41	27	50	
2C-26-45	M26X1.5	M45X2	18	35	38.5	55	41	32	50	
2C-30-45	M30X2	M45X2	22	35	40.5	57	41	36	50	
2C-36-45	M36X2	M45X2	28	35	40.5	57	41	41	50	
2C-12-52	M12X1.5	M52X2	6	42	40.5	55	50	14	60	
2C-14-52	M14X1.5	M52X2	8	42	40.5	55	50	17	60	
2C-16-52	M16X1.5	M52X2	10	42	41.5	56	50	19	60	
2C-18-52	M18X1.5	M52X2	12	42	41.5	56	50	22	60	
2C-22-52	M22X1.5	M52X2	15	42	42.5	58	50	27	60	
2C-26-52	M26X1.5	M52X2	18	42	42	58	50	32	60	
2C-30-52	M30X2	M52X2	22	42	44	60	50	36	60	
2C-36-52	M36X2	M52X2	28	42	44	61	50	41	60	
2C-45-52	M45X2	M52X2	35	42	43	65	50	50	60	

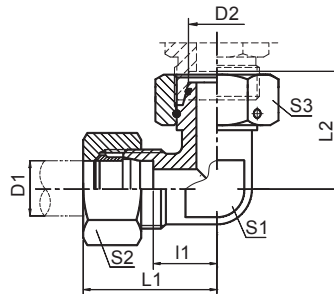
注：如需带卡套及卡套螺母整套订货，则请在代号后加“RN”，如 2C-30-52RN。

Note: In case if you are interested to order the adaptor in complete set with cutting ring and nut, it is necessary to insert suffix "RN" after our part no., for example 2C-30-52RN.

DIN 卡套式管接头



**2C9
2D9**



**2C9-RN
2D9-RN**

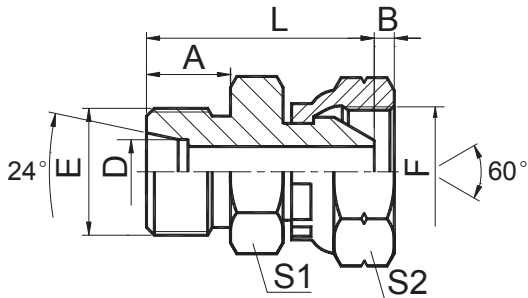
外螺纹内螺纹转换接头 90° 弯
REDUCER TUBE ADAPTOR
WITH SWIVEL NUT 90° ELBOW

代号 PART NO.	螺纹 THREAD		管子外径 TUBE O.D.		尺寸 DIMENSIONS						压力等级 MPa
	E	F	D1	D2	l1	L1	L2	S1	S2	S3	
2C9-12	M12X1.5	M12X1.5	6	6	12	27	26	12	14	14	25 轻系列 L
2C9-14	M14X1.5	M14X1.5	8	8	14	29	27.5	12	17	17	
2C9-16	M16X1.5	M16X1.5	10	10	15	30	29	14	19	19	
2C9-18	M18X1.5	M18X1.5	12	12	17	32	29.5	17	22	22	
2C9-22	M22X1.5	M22X1.5	15	15	21	36	32.5	19	27	27	
2C9-26	M26X1.5	M26X1.5	18	18	23.5	40	35.5	24	32	32	
2C9-30	M30X2	M30X2	22	22	27.5	44	38.5	27	36	36	16 轻系列 L
2C9-36	M36X2	M36X2	28	28	30.5	47	41.5	36	41	41	
2C9-45	M45X2	M45X2	35	35	34.5	56	51	41	50	50	
2C9-52	M52X2	M52X2	42	42	40	63	56	50	60	60	
2D9-14	M14X1.5	M14X1.5	6	6	16	31	27	12	17	17	63 重系列 S
2D9-16	M16X1.5	M16X1.5	8	8	17	32	27.5	14	19	19	
2D9-18	M18X1.5	M18X1.5	10	10	17.5	34	30	17	22	22	
2D9-20	M20X1.5	M20X1.5	12	12	21.5	38	31	17	24	24	
2D9-22	M22X1.5	M22X1.5	14	14	22	40	35	19	27	27	
2D9-24	M24X1.5	M24X1.5	16	16	24.5	43	36.5	24	30	30	40 重系列 S
2D9-30	M30X2	M30X2	20	20	26.5	48	44.5	27	36	36	
2D9-36	M36X2	M36X2	25	25	30	54	50	36	46	46	
2D9-42	M42X2	M42X2	30	30	35.5	62	55	41	50	50	
2D9-52	M52X2	M52X2	38	38	41	72	63	50	60	60	31.5 重系列 S

注：如需带卡套及卡套螺母整套订货，则请在代号后加“RN”，如 2C9-30RN。

Note: In case if you are interested to order the adapter in complete set with cutting ring and nut ,it is necessary to insert suffix "RN" after our part no., for example 2C9-30RN.

过渡接头 ADAPTER

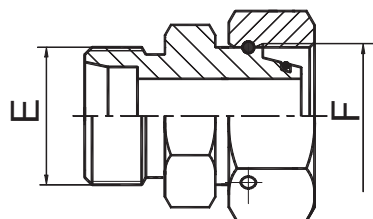


2CB

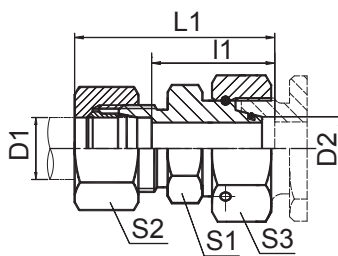
公制外螺纹 24° 轻系列 / 英管内螺纹
METRIC MALE 24° L.T./BSPP FEMALE

代号 PART NO.	螺纹 THREAD		管子外径 TUBE O.D		尺寸 DIMENSIONS				
	E	F	D		A	B	L	S1	S2
2CB-12-02	M12X1.5	G1/8"X28	6		11	5.5	26	14	14
2CB-14-04	M14X1.5	G1/4"X19	8		13	5.5	30.5	17	19
2CB-16-04	M16X1.5	G1/4"X19	10		13.5	5.5	30.5	17	19
2CB-16-06	M16X1.5	G3/8"X19	10		13.5	6.3	32	17	22
2CB-16-08	M16X1.5	G1/2"X14	10		13.5	7.5	33.5	19	27
2CB-18-06	M18X1.5	G3/8"X19	12		13.5	6.3	32	19	22
2CB-22-06	M22X1.5	G3/8"X19	15		13.5	6.3	33.5	24	22
2CB-22-08	M22X1.5	G1/2"X14	15		13.5	7.5	35.5	24	27
2CB-26-08	M26X1.5	G1/2"X14	18		14	7.5	38	27	27
2CB-30-12	M30X2	G3/4"X14	22		18	10.9	44	32	32
2CB-36-12	M36X2	G3/4"X14	28		18	10.9	44	38	32
2CB-36-16	M36X2	G1"X11	28		18	11.7	45	38	41
2CB-45-20	M45X2	G1.1/4"X11	35		19	11	50.5	46	50
2CB-52-24	M52X2	G1.1/2"X11	42		19	13	53	55	55

DIN2353 卡套式管接头



2D



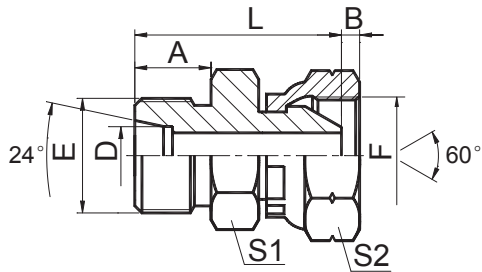
2D-RN

外螺纹内螺纹转换接头
REDUCER TUBE ADAPTOR
WITH SWIVEL NUT

代号 PART NO.	螺纹 THREAD		管子外径 TUBE O.D.		尺寸 DIMENSIONS					压力等级 MPa
	E	F	D1	D2	l1	L1	S1	S2	S3	
2D-14-16	M14X1.5	M16X1.5	6	8	27	42	14	17	19	63 重系列 S
2D-14-18	M14X1.5	M18X1.5	6	10	27.5	42	17	17	22	
2D-16-18	M16X1.5	M18X1.5	8	10	27.5	42	17	19	22	
2D-14-20	M14X1.5	M20X1.5	6	12	29	44	17	17	24	
2D-16-20	M16X1.5	M20X1.5	8	12	29	44	17	19	24	
2D-18-20	M18X1.5	M20X1.5	10	12	31	46	19	22	24	
2D-14-22	M14X1.5	M22X1.5	6	14	31.5	46	19	17	27	
2D-16-22	M16X1.5	M22X1.5	8	14	31.5	46	19	19	27	
2D-18-22	M18X1.5	M22X1.5	10	14	31	47	19	22	27	
2D-20-22	M20X1.5	M22X1.5	12	14	31	47	22	24	27	
2D-14-24	M14X1.5	M24X1.5	6	16	32	47	22	17	30	40 重系列 S
2D-16-24	M16X1.5	M24X1.5	8	16	32	47	22	19	30	
2D-18-24	M18X1.5	M24X1.5	10	16	31.5	48	22	22	30	
2D-20-24	M20X1.5	M24X1.5	12	16	33.5	50	22	24	30	
2D-22-24	M22X1.5	M24X1.5	14	16	33	51	24	27	30	
2D-14-30	M14X1.5	M30X2	6	20	36	51	27	17	36	
2D-16-30	M16X1.5	M30X2	8	20	36	51	27	19	36	
2D-18-30	M18X1.5	M30X2	10	20	35.5	52	27	22	36	
2D-20-30	M20X1.5	M30X2	12	20	35.5	52	27	24	36	
2D-22-30	M22X1.5	M30X2	14	20	37	55	27	27	36	
2D-24-30	M24X1.5	M30X2	16	20	37.5	55	30	30	36	
2D-14-36	M14X1.5	M36X2	6	25	38.5	53	36	17	46	31.5 重系列 S
2D-16-36	M16X1.5	M36X2	8	25	38.5	53	36	19	46	
2D-18-36	M18X1.5	M36X2	10	25	38	54	36	22	46	
2D-20-36	M20X1.5	M36X2	12	25	38	54	36	24	46	
2D-22-36	M22X1.5	M36X2	14	25	39.5	57	36	27	46	
2D-24-36	M24X1.5	M36X2	16	25	39	57	36	30	46	
2D-30-36	M30X2	M36X2	20	25	39	61	36	36	46	
2D-14-42	M14X1.5	M42X2	6	30	44	59	41	17	50	
2D-16-42	M16X1.5	M42X2	8	30	44	59	41	19	50	
2D-18-42	M18X1.5	M42X2	10	30	43.5	60	41	22	50	
2D-20-42	M20X1.5	M42X2	12	30	43.5	60	41	24	50	
2D-22-42	M22X1.5	M42X2	14	30	45	63	41	27	50	
2D-24-42	M24X1.5	M42X2	16	30	44.5	63	41	30	50	
2D-30-42	M30X2	M42X2	20	30	44.5	66	41	36	50	
2D-36-42	M36X2	M42X2	25	30	44	69	41	46	50	
2D-14-52	M14X1.5	M52X2	6	38	47.5	62	50	17	60	31.5 重系列 S
2D-16-52	M16X1.5	M52X2	8	38	47.5	62	50	19	60	
2D-18-52	M18X1.5	M52X2	10	38	47	63	50	22	60	
2D-20-52	M20X1.5	M52X2	12	38	47	63	50	24	60	
2D-22-52	M22X1.5	M52X2	14	38	48.5	66	50	27	60	
2D-24-52	M24X1.5	M52X2	16	38	48	66	50	30	60	
2D-30-52	M30X2	M52X2	20	38	48	70	50	36	60	
2D-36-52	M36X2	M52X2	25	38	48.5	73	50	46	60	
2D-42-52	M42X2	M52X2	30	38	49	76	50	50	60	

注：如需带卡套及卡套螺母整套订货，请在代号后加“RN”，如2D-30-52RN。

Note: In case if you are interested to order the adapter in complete set with cutting ring and nut, it is necessary to insert suffix "RN" after our part no., for example 2D-30-52RN.

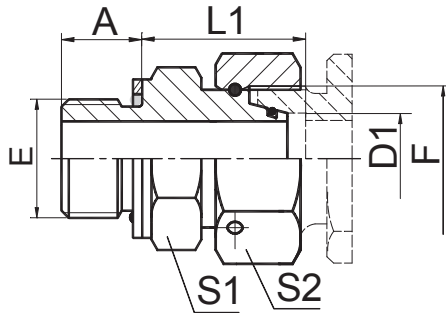


2DB

公制外螺纹 24° 重系列 / 英管内螺纹
 METRIC MALE 24° H.T./BSPP FEMALE

代号 PART NO.	螺纹 THREAD		管子外径 TUBE O.D		尺寸 DIMENSIONS				
	E	F	D		A	B	L	S1	S2
2DB-14-04	M14X1.5	G1/4"X19	6		13.5	5.5	30.5	17	19
2DB-16-04	M16X1.5	G1/4"X19	8		13.5	5.5	30.5	17	19
2DB-18-06	M18X1.5	G3/8"X19	10		13.5	6.3	31.5	19	22
2DB-20-06	M20X1.5	G3/8"X19	12		13.5	6.3	33.5	22	22
2DB-22-08	M22X1.5	G1/2"X14	14		14	7.5	36	24	27
2DB-24-08	M24X1.5	G1/2"X14	16		14	7.5	38	27	27
2DB-30-12	M30X2	G3/4"X14	20		19	10.9	45	32	32
2DB-36-12	M36X2	G3/4"X14	25		20	10.9	47	41	32
2DB-36-16	M36X2	G1"X11	25		20	11.7	49	41	41
2DB-42-20	M42X2	G1.1/4"X11	30		20	11	51.5	46	50
2DB-52-24	M52X2	G1.1/2"X11	38		22	13	56	55	55

DIN 卡套式管接头

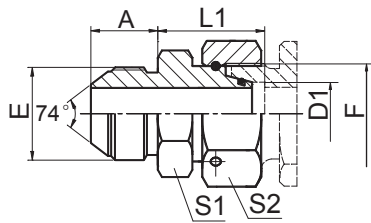


英管螺纹 O 形圈密封柱端
BSP THREAD STUD ENDS
WITH O-RING SEALING

2GC
2GD

代号 PART NO.	螺纹 THREAD		管子外径 TUBE O.D. D1	尺寸 DIMENSIONS						压力等级 MPa
	E	F		A	L1	S1	S2			
2GC-02-12	G1/8"X28	M12X1.5	6	9.5	20.5	14	14			31.5 轻系列 L
2GC-04-14	G1/4"X19	M14X1.5	8	10	23.5	19	17			
2GC-04-16	G1/4"X19	M16X1.5	10	10	24	19	19			
2GC-06-18	G3/8"X19	M18X1.5	12	11.5	25.5	22	22			
2GC-08-22	G1/2"X14	M22X1.5	15	14	28.5	27	27			
2GC-08-26	G1/2"X14	M26X1.5	18	14	29	27	32			
2GC-12-30	G3/4"X14	M30X2	22	15.5	32	32	36			16 轻系列 L
2GC-16-36	G1"X11	M36X2	28	18	35	41	41			
2GC-20-45	G1.1/4"X11	M45X2	35	20	38	50	50			
2GC-24-52	G1.1/2"X11	M52X2	42	21.5	41.5	55	60			
2GD-04-14	G1/4"X19	M14X1.5	6	10	23	19	17			63 重系列 S
2GD-04-16	G1/4"X19	M16X1.5	8	10	26	19	19			
2GD-06-18	G3/8"X19	M18X1.5	10	11.5	25	22	22			
2GD-06-20	G3/8"X19	M20X1.5	12	11.5	28.5	22	24			
2GD-08-22	G1/2"X14	M22X1.5	14	14	31.5	27	27			
2GD-08-24	G1/2"X14	M24X1.5	16	14	30	27	30			
2GD-12-30	G3/4"X14	M30X2	20	15.5	36	32	36			40 重系列 S
2GD-16-36	G1"X11	M36X2	25	18	38.5	41	46			
2GD-20-42	G1.1/4"X11	M42X2	30	20	42	50	50			
2GD-24-52	G1.1/2"X11	M52X2	38	21.5	47.5	55	60			
										31.5重系列S

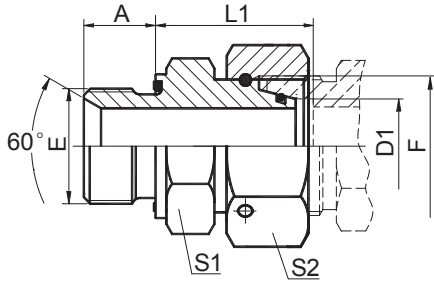
DIN 卡套式管接头



美制 JIC 74° 锥密封
JIC 74° CONE SEALING

2JC
2JD

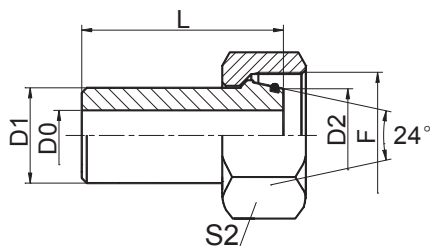
代号 PART NO.	螺纹 THREAD		管子外径 TUBE O.D. D1	尺寸 DIMENSIONS					压力等级 MPa
	E	F		A	L1	S1	S2		
2JC-04-12	7/16"X20	M12X1.5	6	14	23.5	14	17		31.5 轻系列 L
2JC-04-14	7/16"X20	M14X1.5	8	14	21.5	14	19		
2JC-05-14	1/2"X20	M14X1.5	8	14	21.5	14	19		
2JC-05-16	1/2"X20	M16X1.5	10	14	22	17	22		
2JC-06-14	9/16"X18	M14X1.5	8	14.1	21.5	17	19		
2JC-06-16	9/16"X18	M16X1.5	10	14.1	22	17	22		
2JC-06-18	9/16"X18	M18X1.5	12	14.1	22	17	24		
2JC-08-18	3/4"X16	M18X1.5	12	16.7	23	22	24		
2JC-08-22	3/4"X16	M22X1.5	15	16.7	25.5	22	27		
2JC-10-22	7/8"X14	M22X1.5	15	19.3	25.5	24	27		
2JC-10-26	7/8"X14	M26X1.5	18	19.3	26	27	32		
2JC-12-26	1.1/16"X12	M26X1.5	18	21.9	26	30	32		
2JC-12-30	1.1/16"X12	M30X2	22	21.9	29	30	36		
2JC-12-30D	1.1/16"X12	M30X1.5	22	21.9	29	30	36		
2JC-16-36	1.5/16"X12	M36X2	28	23.1	32	36	41		
2JC-16-36D	1.5/16"X12	M36X1.5	28	23.1	32	36	41		
2JC-16-45	1.5/16"X12	M45X2	35	23.1	39	41	50		
2JC-16-45D	1.5/16"X12	M45X1.5	35	23.1	39	41	50		
2JC-20-45	1.5/8"X12	M45X2	35	24.3	39	46	50		
2JC-20-52	1.5/8"X12	M52X2	42	24.3	43	50	60		
2JC-24-52	1.7/8"X12	M52X2	42	27.5	43	50	60		
2JD-04-14	7/16"X20	M14X1.5	6	14	24	14	17		
2JD-04-16	7/16"X20	M16X1.5	8	14	24.5	17	19		
2JD-04-18	7/16"X20	M18X1.5	10	14	22.5	17	24		
2JD-05-18	1/2"X20	M18X1.5	10	14	22.5	17	24		
2JD-06-16	9/16"X18	M16X1.5	8	14.1	24.5	17	19		
2JD-06-18	9/16"X18	M18X1.5	10	14.1	22.5	17	24		
2JD-06-20	9/16"X18	M20X1.5	12	14.1	24	19	27		
2JD-06-22	9/16"X18	M22X1.5	14	14.1	28.5	22	27		
2JD-08-22	3/4"X16	M22X1.5	14	16.7	28.5	22	27		
2JD-08-24	3/4"X16	M24X1.5	16	16.7	27	24	30		
2JD-10-30	7/8"X14	M30X2	20	19.3	31	30	36		
2JD-10-36	7/8"X14	M36X2	25	19.3	34.5	36	46		
2JD-12-30	1.1/16"X12	M30X2	20	21.9	31	30	36		
2JD-12-36	1.1/16"X12	M36X2	25	21.9	34.5	36	46		
2JD-16-42	1.5/16"X12	M42X2	30	23.1	43.5	41	50		
2JD-20-42	1.5/8"X12	M42X2	30	24.3	43	46	50		
2JD-20-52	1.5/8"X12	M52X2	38	24.3	47.5	50	60		
2JD-24-52	1.7/8"X12	M52X2	38	27.5	47	50	60		



公制螺纹胶垫密封柱端
METRIC THREAD WITH CAPTIVE SEAL

2MC-WD
2MD-WD

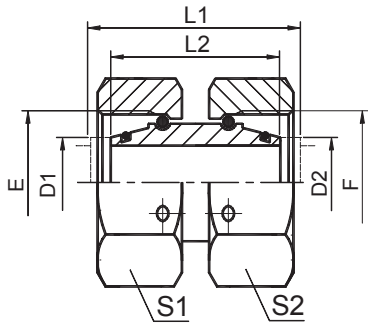
代号 PART NO.	螺纹 THREAD		管子外径 TUBE O.D.		尺寸 DIMENSIONS				压力等级 MPa
	E	F	D1		A	L1	S1	S2	
2MC-10-12WD	M10X1	M12X1.5	6		8	24.5	14	14	31.5 轻系列 L
2MC-12-14WD	M12X1.5	M14X1.5	8		12	26.5	17	17	
2MC-14-16WD	M14X1.5	M16X1.5	10		12	27.5	19	19	
2MC-16-18WD	M16X1.5	M18X1.5	12		12	30.5	22	22	
2MC-18-22WD	M18X1.5	M22X1.5	15		12	31.5	24	27	
2MC-22-26WD	M22X1.5	M26X1.5	18		14	31.5	27	32	
2MC-26-30WD	M26X1.5	M30X2	22		16	32.5	32	36	16 轻系列 L
2MC-33-36WD	M33X2	M36X2	28		18	35	41	41	
2MC-42-45WD	M42X2	M45X2	35		20	42.5	50	50	
2MC-48-52WD	M48X2	M52X2	42		22	46.5	55	60	
2MD-12-14WD	M12X1.5	M14X1.5	6		12	27	17	17	63 重系列 S
2MD-14-16WD	M14X1.5	M16X1.5	8		12	29.5	19	19	
2MD-16-18WD	M16X1.5	M18X1.5	10		12	32	22	22	
2MD-18-20WD	M18X1.5	M20X1.5	12		12	34	24	24	
2MD-20-22WD	M20X1.5	M22X1.5	14		14	36.5	27	27	
2MD-22-24WD	M22X1.5	M24X1.5	16		14	37	27	30	
2MD-27-30WD	M27X2	M30X2	20		16	43	32	36	40 重系列 S
2MD-33-36WD	M33X2	M36X2	25		18	48	41	46	
2MD-42-42WD	M42X2	M42X2	30		20	51	50	50	
2MD-48-52WD	M48X2	M52X2	38		22	60	55	60	



焊接接头
WELD FITTINGS

2WC
2WD

代号 PART NO.	螺纹 THREAD F	管子尺寸 TUBE SIZE D1xt	尺寸 DIMENSIONS				压力等级 MPa
			L	D0	D2	S2	
2WC-6X1.5	M12X1.5	6X1.5	30	2.5	6	14	25 轻系列L
2WC-8X2.0	M14X1.5	8X2.0	30	4	8	17	
2WC-10X2.0	M16X1.5	10X2.0	31	6	10	19	
2WC-12X2.0	M18X1.5	12X2.0	31	7.5	12	22	
2WC-15X2.0	M22X1.5	15X2.0	35	10	15	27	
2WC-18X2.0	M26X1.5	18X2.0	35	13	18	32	
2WC-22X2.0	M30X2	22X2.0	35	17	22	36	16 轻系列L
2WC-28X2.5	M36X2	28X2.5	41	23	28	41	
2WC-35X3.0	M45X2	35X3.0	48	29	35	50	
2WC-42X3.0	M52X2	42X3.0	50.5	36	42	60	
2WD-6X1.5	M14X1.5	6X1.5	28.5	2.5	6	17	63 重系列S
2WD-8X2.0	M16X1.5	8X2.0	29	4	8	19	
2WD-10X1.0	M18X1.5	10X1.0	32	6.5	10	22	
2WD-10X1.5	M18X1.5	10X1.5	32	6.5	10	22	
2WD-10X2.0	M18X1.5	10X2.0	32	6	10	22	
2WD-12X1.5	M20X1.5	12X1.5	32.5	8	12	27	
2WD-12X2.0	M20X1.5	12X2.0	32.5	8	12	27	
2WD-12X2.5	M20X1.5	12X2.5	32.5	7	12	27	
2WD-16X1.5	M24X1.5	16X1.5	39	13	16	30	
2WD-16X2.0	M24X1.5	16X2.0	39	12	16	30	
2WD-16X2.5	M24X1.5	16X2.5	39	11	16	30	
2WD-16X3.0	M24X1.5	16X3.0	39	10	16	30	
2WD-20X2.0	M30X2	20X2.0	43	15	20	36	40 重系列S
2WD-20X2.5	M30X2	20X2.5	43	15	20	36	
2WD-20X3.0	M30X2	20X3.0	43	14	20	36	
2WD-20X4.0	M30X2	20X4.0	43	12	20	36	
2WD-25X2.5	M36X2	25X2.5	50	20	25	46	
2WD-25X3.0	M36X2	25X3.0	50	19	25	46	
2WD-25X4.0	M36X2	25X4.0	50	17	25	46	
2WD-25X5.0	M36X2	25X5.0	50	15	25	46	
2WD-30X3.0	M42X2	30X3.0	52	24	30	50	
2WD-30X4.0	M42X2	30X4.0	52	22	30	50	
2WD-30X5.0	M42X2	30X5.0	52	20	30	50	
2WD-30X6.0	M42X2	30X6.0	52	18	30	50	
2WD-38X4.0	M52X2	38X4.0	56.5	30	38	60	25 重系列S
2WD-38X5.0	M52X2	38X5.0	56.5	28	38	60	
2WD-38X6.0	M52X2	38X6.0	56.5	26	38	60	
2WD-38X7.0	M52X2	38X7.0	56.5	24	38	60	

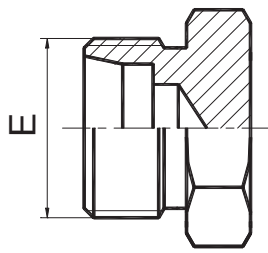


内螺纹直通接头
STRAIGHT TUBE ADAPTERS
WITH SWIVEL NUT

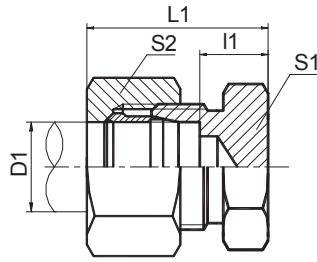
3C
3D

代号 PART NO.	螺纹 THREAD		管子外径 TUBE O.D.		尺寸 DIMENSIONS					压力等级 MPa
	E,F		D1,D2		L1	L2	S1,S2			
3C-12	M12X1.5		6		33	32	14			31.5 轻系列 L
3C-14	M14X1.5		8		33	32	17			
3C-16	M16X1.5		10		34	33	19			
3C-18	M18X1.5		12		34	33	22			
3C-22	M22X1.5		15		39	38	27			
3C-26	M26X1.5		18		41	39	32			
3C-30	M30X2		22		44	42	36			16 轻系列 L
3C-36	M36X2		28		48	46	46			
3C-45	M45X2		35		52	48	50			
3C-52	M52X2		42		57	52	60			
3D-14	M14X1.5		6		33	32	17			63 重系列 S
3D-16	M16X1.5		8		34	33	19			
3D-18	M18X1.5		10		35	33	22			
3D-20	M20X1.5		12		38	36	24			
3D-22	M22X1.5		14		41	39	27			
3D-24	M24X1.5		16		42	39	30			40 重系列 S
3D-30	M30X2		20		48	44	36			
3D-36	M36X2		25		53	46	46			
3D-42	M42X2		30		62	52	50			
3D-52	M52X2		38		67	52	60			31.5 重系列 S

DIN 卡套式管接头



4C
4D



4C-RN
4D-RN

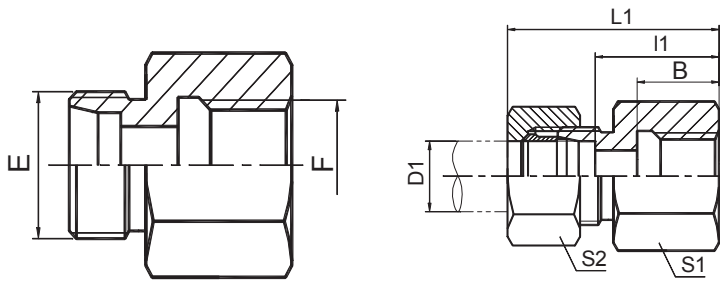
堵头
PLUG

代号 PART NO.	螺纹 THREAD	管子外径 TUBE O.D.	尺寸 DIMENSIONS						压力等级 MPa
	E	D1	I1	L1	S1	S2			
4C-12	M12x1.5	6	7	22	12	14			31.5 轻系列 L
4C-14	M14x1.5	8	8	23	14	17			
4C-16	M16x1.5	10	9	24	17	19			
4C-18	M18x1.5	12	10	25	19	22			
4C-22	M22x1.5	15	11	26	24	27			
4C-26	M26X1.5	18	11.5	28	27	32			
4C-30	M30x2	22	13.5	30	32	36			16 轻系列 L
4C-30D	M30x1.5	22	13.5	30	32	36			
4C-36	M36x2	28	14.5	31	41	41			
4C-36D	M36x1.5	28	14.5	31	41	41			
4C-45	M45X2	35	14.5	36	46	50			
4C-45D	M45X1.5	35	14.5	36	46	50			
4C-52	M52X2	42	16	39	55	60			63 重系列 S
4D-14	M14X1.5	6	11	26	14	17			
4D-16	M16X1.5	8	13	28	17	19			
4D-18	M18x1.5	10	12.5	29	19	22			
4D-20	M20x1.5	12	14.5	31	22	24			
4D-22	M22x1.5	14	16	34	24	27			
4D-24	M24x1.5	16	15.5	34	27	30			40 重系列 S
4D-30	M30x2	20	17.5	39	32	36			
4D-36	M36x2	25	20	44	38	46			
4D-42	M42x2	30	20.5	47	46	50			
4D-52	M52X2	38	23	54	55	60			31.5重系列S

注：如需带卡套及卡套螺母整套订货，则请在代号后加“RN”，如4C-30RN。

Note: In case if you are interested to order the adapter in complete set with cutting ring and nut ,it is necessary to insert suffix "RN" after our part no., for example 4C-30RN.

DIN 卡套式管接头



英管内螺纹柱端接头
BSP FEMALE STUD FITTINGS

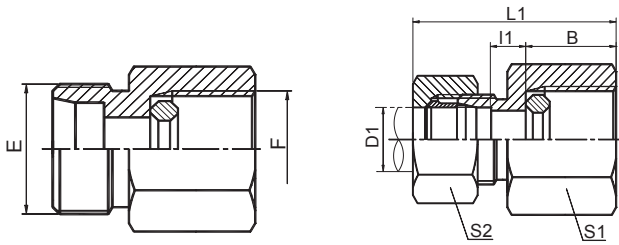
**5CB
5DB**

**5CB-RN
5DB-RN**

代号 PART NO.	螺纹 THREAD		管子外径 TUBE O.D. D1	尺寸 DIMENSIONS						压力等级 MPa
	E	F		B	l1	L1	S1	S2		
5CB-12-02	M12X1.5	G1/8"X28	6	12	19	34	14	14		31.5 轻系列 L
5CB-12-04	M12X1.5	G1/4"X19	6	16	23	36	19	17		
5CB-14-04	M14X1.5	G1/4"X19	8	17	24	39	19	17		
5CB-14-06	M14X1.5	G3/8"X19	8	17	25	40	24	17		
5CB-14-08	M14X1.5	G1/2"X14	8	20	29	44	27	17		
5CB-16-04	M16X1.5	G1/4"X19	10	17	25	40	19	19		
5CB-16-06	M16X1.5	G3/8"X19	10	17	26	41	24	19		
5CB-16-08	M16X1.5	G1/2"X14	10	20	30	45	27	19		
5CB-18-04	M18X1.5	G1/4"X19	12	17	23	38	19	22		
5CB-18-06	M18X1.5	G3/8"X19	12	17	26	41	24	22		
5CB-18-08	M18X1.5	G1/2"X14	12	20	30	45	27	22		
5CB-22-06	M22X1.5	G3/8"X19	15	17	28	43	24	27		
5CB-22-08	M22X1.5	G1/2"X14	15	20	31	46	27	27		
5CB-26-08	M26X1.5	G1/2"X14	18	20	30.5	47	27	32		
5CB-30-12	M30X2	G3/4"X14	22	22	35.5	52	36	36		
5CB-36-16	M36X2	G1"X11	28	24.5	38	55	41	41		
5CB-45-20	M45X2	G1.1/4"X11	35	26.5	41	63	55	50		
5CB-52-24	M52X2	G1.1/2"X11	42	28.5	42.5	65	60	60		
5DB-14-04	M14X1.5	G1/4"X19	6	17	26	41	19	17		
5DB-16-04	M16X1.5	G1/4"X19	8	17	26	41	19	19		
5DB-18-06	M18X1.5	G3/8"X19	10	17	26.5	43	24	22		
5DB-20-06	M20X1.5	G3/8"X19	12	17	27.5	28	24	24		
5DB-20-08	M20X1.5	G1/2"X14	12	20	30.5	31	24	24		
5DB-22-08	M22X1.5	G1/2"X14	14	20	32	50	30	27		
5DB-24-08	M24X1.5	G1/2"X14	16	20	31.5	50	30	30		
5DB-30-12	M30X2	G3/4"X14	20	22	34.5	56	36	36		
5DB-36-16	M36X2	G1"X11	25	24.5	37.5	62	41	46		
5DB-42-20	M42X2	G1.1/4"X11	30	26.5	42	69	55	50		
5DB-52-24	M52X2	G1.1/2"X11	38	28.5	43.5	74	60	60		

注：如需带卡套及卡套螺母整套订货，则请在代号后加“RN”，如 5CB-45-20RN。
Note: In case if you are interested to order the adapter in complete set with cutting ring and nut ,it is necessary to insert suffix "RN" after our part no., for example 5CB-45-20RN.

DIN 卡套式管接头



5CB-GDK
5DB-GDK

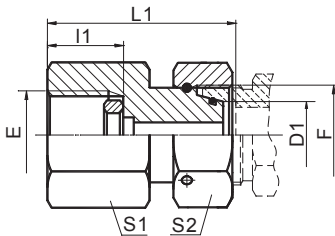
5CB-GDK/RN
5DB-GDK/RN

钢垫密封英管压力表接头
BSP PRESSURE GAUGE CONNECTOR
WITH DKI SEALING RING

代号 PART NO.	螺纹 THREAD		管子外径 TUBE O.D. D1	尺寸 DIMENSIONS					密封钢垫 SEALING RING DKI	压力等级 MPa
	E	F		l1	L1	B	S1	S2		
5CB-12-04GDK	M12X1.5	G1/4"X19	6	7.5	37	14.5	19	14	DP-B04DK	31.5 轻系列 L
5CB-14-04GDK	M14X1.5	G1/4"X19	8	7.5	37	14.5	19	17	DP-B04DK	
5CB-16-04GDK	M16X1.5	G1/4"X19	10	8.5	38	14.5	19	19	DP-B04DK	
5CB-18-04GDK	M18X1.5	G1/4"X19	12	8.5	38	14.5	19	22	DP-B04DK	
5DB-14-08GDK	M14X1.5	G1/2"X14	6	11	46	20	27	17	DP-B08DK	63 重系列 S
5DB-16-08GDK	M16X1.5	G1/2"X14	8	11	46	20	27	19	DP-B08DK	
5DB-18-08GDK	M18X1.5	G1/2"X14	10	10.5	47	20	27	22	DP-B08DK	
5DB-20-08GDK	M20X1.5	G1/2"X14	12	10.5	47	20	27	24	DP-B08DK	

注：如需带卡套及卡套螺母整套订货，则请在代号后加“RN”，如5CB-18-04GDK/RN。

Note: In case if you are interested to order the adapter in complete set with cutting ring and nut, it is necessary to insert suffix "RN" after our part no., for example 5CB-18-04GDK/RN.

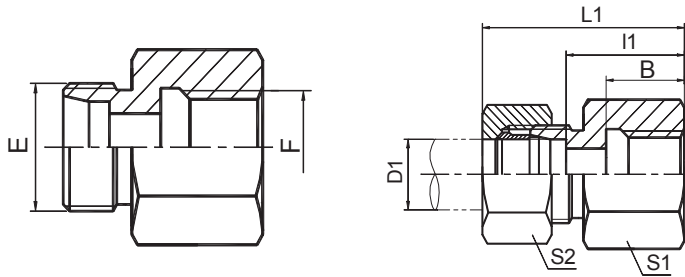


7BC-GDK/S
7BD-GDK/S

钢垫密封英管压力表接头
BSP PRESSURE GAUGE CONNECTOR
WITH DKI SEALING RING

代号 PART NO.	螺纹 THREAD		管子外径 TUBE O.D. D1	尺寸 DIMENSIONS					密封钢垫 SEALING RING DKI	压力等级 MPa
	E	F		l1	L1	S1	S2			
7BC-04-12GDK/S	G1/4"X19	M12X1.5	6	14.5	35.5	19	14		DP-B04DK	31.5 轻系列 L
7BC-04-14GDK/S	G1/4"X19	M14X1.5	8	14.5	35.5	19	17		DP-B04DK	
7BC-04-16GDK/S	G1/4"X19	M16X1.5	10	14.5	36	19	19		DP-B04DK	
7BC-04-18GDK/S	G1/4"X19	M18X1.5	12	14.5	36	19	22		DP-B04DK	
7BD-04-14GDK/S	G1/4"X19	M14X1.5	6	14.5	35.5	19	17		DP-B04DK	63 重系列 S
7BD-04-16GDK/S	G1/4"X19	M16X1.5	8	14.5	35.5	19	19		DP-B04DK	
7BD-04-18GDK/S	G1/4"X19	M18X1.5	10	14.5	36	19	22		DP-B04DK	
7BD-04-20GDK/S	G1/4"X19	M20X1.5	12	14.5	39	19	24		DP-B04DK	
7BD-08-14GDK/S	G1/2"X14	M14X1.5	6	20	42.5	27	17		DP-B08DK	
7BD-08-16GDK/S	G1/2"X14	M16X1.5	8	20	43	27	19		DP-B08DK	
7BD-08-18GDK/S	G1/2"X14	M18X1.5	10	20	43.5	27	22		DP-B08DK	
7BD-08-20GDK/S	G1/2"X14	M20X1.5	12	20	45	27	24		DP-B08DK	

DIN 卡套式管接头



公制内螺纹柱端接头
METRIC FEMALE STUD FITTINGS

**5CM
5DM**

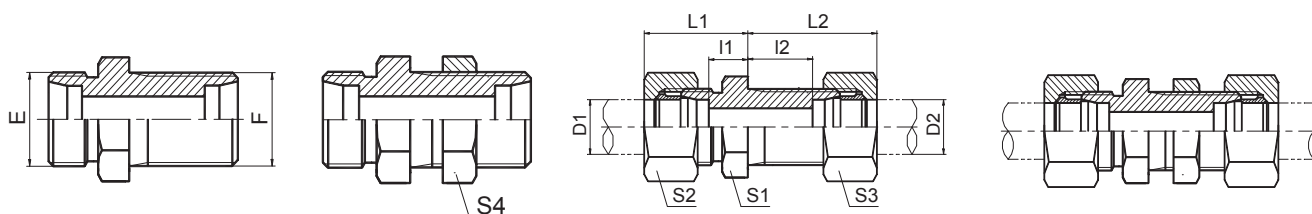
**5CM-RN
5DM-RN**

代号 PART NO.	螺纹 THREAD		管子外径 TUBE O.D.		尺寸 DIMENSIONS						压力等级 MPa
	E	F	D1		B	I1	L1	S1	S2		
5CM-12-10	M12X1.5	M10X1	6		12.5	19.5	34	14	14		25 轻系列 L
5CM-14-12	M14X1.5	M12X1.5	8		17	24	39	17	17		
5CM-16-14	M16X1.5	M14X1.5	10		17	25	40	19	19		
5CM-18-16	M18X1.5	M16X1.5	12		17	26	41	22	22		
5CM-22-18	M22X1.5	M18X1.5	15		17	28	43	24	27		
5CM-26-22	M26X1.5	M22X1.5	18		19	29.5	46	30	32		
5CM-30-26	M30X2	M26X1.5	22		21	34.5	51	32	36		16 轻系列 L
5CM-36-33	M36X2	M33X2	28		24	37.5	54	41	41		
5CM-45-42	M45X2	M42X2	35		26	40.5	62	55	50		
5CM-52-48	M52X2	M48X2	42		28	42	65	60	60		
5DM-14-12	M14X1.5	M12X1.5	6		17	26	41	17	17		63 重系列 S
5DM-16-14	M16X1.5	M14X1.5	8		17	26	41	19	19		
5DM-18-16	M18X1.5	M16X1.5	10		17	26.5	43	22	22		
5DM-20-18	M20X1.5	M18X1.5	12		17	27.5	44	24	24		
5DM-22-20	M22X1.5	M20X1.5	14		19	31	49	27	27		
5DM-24-22	M24X1.5	M22X1.5	16		19	30.5	49	30	30		
5DM-30-27	M30X2	M27X2	20		22	34.5	56	36	36		40 重系列 S
5DM-36-33	M36X2	M33X2	25		24	37	61	41	46		
5DM-42	M42X2	M42X2	30		26	41.5	68	55	50		
5DM-52-48	M52X2	M48X2	38		28	43	74	60	60		25 重系列 S

注：如需带卡套及卡套螺母整套订货，则请在代号后加“RN”，如 5DM-30-27RN。

Note: In case if you are interested to order the adapter in complete set with cutting ring and nut ,it is necessary to insert suffix "RN" after our part no., for example 5DM-30-27RN.

DIN 卡套式管接头



6C
6D

6C-LN
6D-LN

6C-RN
6D-RN

6C-LN/RN
6D-LN/RN

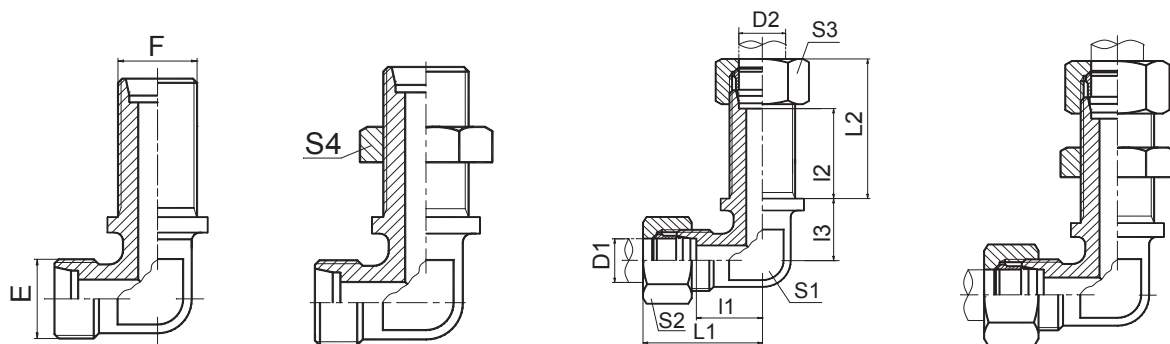
直通过板接头
STRAIGHT BULKHEAD FITTINGS

代号 PART NO.	螺纹 THREAD		管子外径 TUBE O.D.		尺寸 DIMENSIONS							压力等级 MPa
	E	F	D1	D2	l1	l2	L1	L2	S1	S2,S3	S4	
6C-12	M12X1.5	M12X1.5	6	6	7	27	22	42	17	14	17	31.5 轻系列 L
6C-14	M14X1.5	M14X1.5	8	8	8	27	23	42	19	17	19	
6C-16	M16X1.5	M16X1.5	10	10	10	28	25	43	22	19	22	
6C-18	M18X1.5	M18X1.5	12	12	10	29	25	44	24	22	24	
6C-22	M22X1.5	M22X1.5	15	15	12	31	27	46	27	27	30	
6C-26	M26X1.5	M26X1.5	18	18	13.5	32.5	30	49	32	32	36	
6C-30	M30X2	M30X2	22	22	16.5	34.5	33	51	36	36	41	16 轻系列 L
6C-36	M36X2	M36X2	28	28	18.5	35.5	35	52	41	41	46	
6C-45	M45X2	M45X2	35	35	18.5	36.5	40	58	50	50	55	
6C-52	M52X2	M52X2	42	42	19	36	42	59	60	60	65	
6D-14	M14X1.5	M14X1.5	6	6	12	29	27	44	19	17	19	63 重系列 S
6D-16	M16X1.5	M16X1.5	8	8	13	29	28	44	22	19	22	
6D-18	M18X1.5	M18X1.5	10	10	14.5	29.5	31	46	24	22	24	
6D-20	M20X1.5	M20X1.5	12	12	14.5	30.5	31	47	27	24	27	
6D-22	M22X1.5	M22X1.5	14	14	17	32	35	50	30	27	30	
6D-24	M24X1.5	M24X1.5	16	16	16.5	31.5	35	50	32	30	32	40 重系列 S
6D-30	M30X2	M30X2	20	20	17.5	33.5	39	55	41	36	41	
6D-36	M36X2	M36X2	25	25	20	35	44	59	46	46	46	
6D-42	M42X2	M42X2	30	30	21.5	37.5	48	64	50	50	50	
6D-52	M52X2	M52X2	38	38	22	37	53	68	65	60	65	31.5 重系列 S

注：如需带锁母订货，则请在代号后加“LN”，如 6C-30LN；如需带卡套及卡套螺母订货，在代号后加“RN”，如 6C-30RN；如需带锁母、卡套及卡套螺母订货，在代号后加“LN/RN”，如 6C-30LN/RN。

Note: In case if you are interested to order the adapter with lock nut, please insert suffix "LN" after our part no. for example 6C-30LN, order the adapter with cutting ring and nut, insert suffix "RN" after part no., for example 6C-30RN, order the adapter with lock nut and cutting ring and nut, insert suffix "LN/RN" after part no., for example 6C-30LN/RN.

DIN 卡套式管接头



6C9
6D9

6C9-LN
6D9-LN

6C9-RN
6D9-RN

6C9-LN/RN
6D9-LN/RN

90° 弯曲过板接头
90° ELBOW BULKHEAD FITTINGS

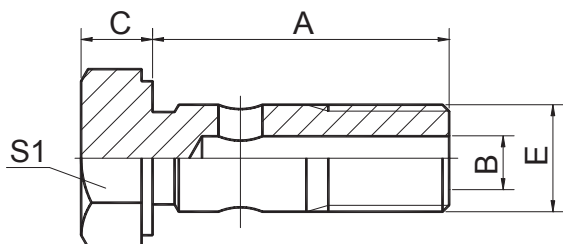
代号 PART NO.	螺纹 THREAD		管子外径 TUBE O.D.		尺寸 DIMENSIONS								压力等级 MPa
	E	F	D1	D2	I1	I2	I3	L1	L2	S1	S2,S3	S4	
6C9-12	M12X1.5	M12X1.5	6	6	27	12	14	42	27	12	14	17	31.5 轻系列 L
6C9-14	M14X1.5	M14X1.5	8	8	27	14	17	42	29	12	17	19	
6C9-16	M16X1.5	M16X1.5	10	10	28	15	18	43	30	14	19	22	
6C9-18	M18X1.5	M18X1.5	12	12	29	17	20	44	32	17	22	24	
6C9-22	M22X1.5	M22X1.5	15	15	31	21	23	46	36	19	27	30	
6C9-26	M26X1.5	M26X1.5	18	18	32.5	23.5	24	49	40	24	32	36	
6C9-30	M30X2	M30X2	22	22	34.5	27.5	30	51	44	27	36	41	16 轻系列 L
6C9-36	M36X2	M36X2	28	28	35.5	30.5	34	52	47	36	41	46	
6C9-45	M45X2	M45X2	35	35	36.5	34.5	39	58	56	41	50	55	
6C9-52	M52X2	M52X2	42	42	36	40	43	59	63	50	60	65	
6D9-14	M14X1.5	M14X1.5	6	6	29	16	17	44	31	12	17	19	63 重系列 S
6D9-16	M16X1.5	M16X1.5	8	8	29	17	18	44	32	14	19	22	
6D9-18	M18X1.5	M18X1.5	10	10	29.5	17.5	20	46	34	17	22	24	
6D9-20	M20X1.5	M20X1.5	12	12	30.5	21.5	21	47	38	17	24	27	
6D9-22	M22X1.5	M22X1.5	14	14	32	22	23	50	40	19	27	30	
6D9-24	M24X1.5	M24X1.5	16	16	31.5	24.5	24	50	43	24	30	32	40 重系列 S
6D9-30	M30X2	M30X2	20	20	33.5	26.5	30	55	48	27	36	41	
6D9-36	M36X2	M36X2	25	25	35	30	34	59	54	36	46	46	
6D9-42	M42X2	M42X2	30	30	37.5	35.5	39	64	62	41	50	50	
6D9-52	M52X2	M52X2	38	38	37	41	43	68	72	50	60	65	

注：如需带锁母订货，则请在代号后加“LN”，如6C9-30LN；如需带卡套及卡套螺母订货，在代号后加“RN”，如6C9-30RN；如需带锁母、卡套及卡套螺母订货，在代号后加“LN/RN”，如6C9-30LN/RN。

Note: In case if you are interested to order the adapter with lock nut, please insert suffix "LN" after our part no. for example 6C9-30LN, order the adapter with cutting ring and nut, insert suffix "RN" after part no., for example 6C9-30RN, order the adapter with lock nut and cutting ring and nut, insert suffix "LN/RN" after part no., for example 6C9-30LN/RN.



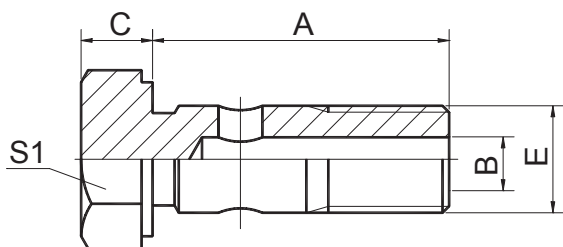
公制螺纹卡套接头 METRIC THREAD BITE TYPE TUBE **JIAYUAN** S



700M-I

公制铰接螺栓
METRIC BOLT

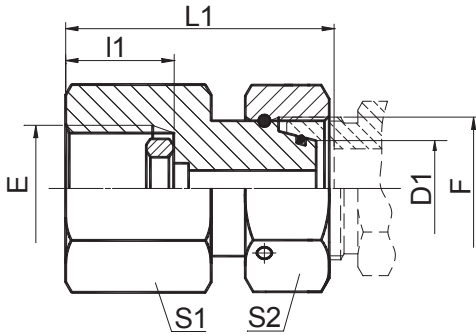
代号 PART NO.	螺纹 E THREAD E	尺寸 DIMENSIONS			
		A	B	C	S1
700M-10I	M10X1	27	4	6.5	14
700M-12I	M12X1.5	38	6	7	17
700M-14I	M14X1.5	38	8	7	19
700M-16I	M16X1.5	43	9	8	22
700M-18I	M18X1.5	46	11	8	24
700M-20I	M20X1.5	51	12	9	27
700M-22I	M22X1.5	54	14	9	27
700M-26I	M26X1.5	61	17	11	36
700M-27I	M27X2	61	18	11	36
700M-33I	M33X2	76	22	13	41
700M-42I	M42X2	88	27	14	50
700M-48I	M48X2	100	31	15	55



720B-I

英制铰接螺栓
BSP BOLT

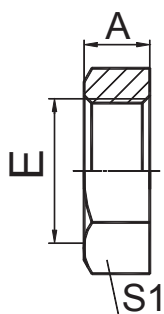
代号 PART NO.	螺纹 E THREAD E	尺寸 DIMENSIONS			
		A	B	C	S1
720B-02I	G1/8"X28	27	4	6.5	14
720B-04I	G1/4"X19	38	6	7	19
720B-06I	G3/8"X19	42	9	8	24
720B-08I	G1/2"X14	54	12	9	27
720B-12I	G3/4"X14	61	17	11	36
720B-16I	G1"X11	76	22	13	41
720B-20I	G1.1/4"X11	88	27	14	50
720B-24I	G1.1/2"X11	100	31	15	55



钢垫密封英管压力表接头
BSP PRESSURE GAUGE CONNECTOR
WITH DKI SEALING RING

7BC-GDK/S 7BD-GDK/S

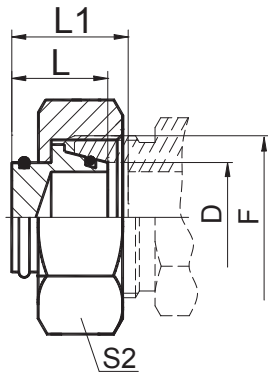
代号 PART NO.	螺纹 THREAD		管子外径 TUBE O.D.		尺寸 DIMENSIONS				密封钢垫 SEALING RING DKI	压力等级 MPa
	E	F	D1		l1	L1	S1	S2		
7BC-04-12GDK/S	G1/4"X19	M12X1.5	6		14.5	35.5	19	14	DP-B04DK	31.5 轻系列 L
7BC-04-14GDK/S	G1/4"X19	M14X1.5	8		14.5	35.5	19	17	DP-B04DK	
7BC-04-16GDK/S	G1/4"X19	M16X1.5	10		14.5	36	19	19	DP-B04DK	
7BC-04-18GDK/S	G1/4"X19	M18X1.5	12		14.5	36	19	22	DP-B04DK	
7BD-04-14GDK/S	G1/4"X19	M14X1.5	6		14.5	35.5	19	17	DP-B04DK	63 重系列 S
7BD-04-16GDK/S	G1/4"X19	M16X1.5	8		14.5	35.5	19	19	DP-B04DK	
7BD-04-18GDK/S	G1/4"X19	M18X1.5	10		14.5	36	19	22	DP-B04DK	
7BD-04-20GDK/S	G1/4"X19	M20X1.5	12		14.5	39	19	24	DP-B04DK	
7BD-08-14GDK/S	G1/2"X14	M14X1.5	6		20	42.5	27	17	DP-B08DK	
7BD-08-16GDK/S	G1/2"X14	M16X1.5	8		20	43	27	19	DP-B08DK	
7BD-08-18GDK/S	G1/2"X14	M18X1.5	10		20	43.5	27	22	DP-B08DK	
7BD-08-20GDK/S	G1/2"X14	M20X1.5	12		20	45	27	24	DP-B08DK	



8C

公制螺纹锁母
METRIC LOCK NUT

代号 PART NO.	螺纹 THREAD				尺寸 DIMENSIONS				
	E				A	S1			
8C-10	M10X1				6	14			
8C-12	M12x1.5				7.5	17			
8C-12(M12X1.25)	M12X1.25				7.5	17			
8C-14	M14x1.5				7.5	19			
8C-16	M16x1.5				7.5	22			
8C-16(A8.5)	M16x1.5				8.5	22			
8C-18	M18x1.5				7.5	24			
8C-20	M20x1.5				8	27			
8C-20(S24XA9)	M20x1.5				9	24			
8C-20(S30XA9)	M20x1.5				9	30			
8C-22	M22x1.5				8	27			
8C-22(S30XA9)	M22x1.5				9	30			
8C-24	M24x1.5				8	30			
8C-26	M26x1.5				8	32			
8C-27	M27x1.5				8	32			
8C-27A	M27x2				10	32			
8C-30	M30x2				10	36			
8C-33	M33x2				10	41			
8C-33A	M33X1.5				10	41			
8C-36	M36x2				10	41			
8C-42	M42x2				10	50			
8C-45	M45x2				10	55			
8C-48	M48x2				10	55			
8C-52	M52x2				10	60			
8C-60	M60x2				10	65			

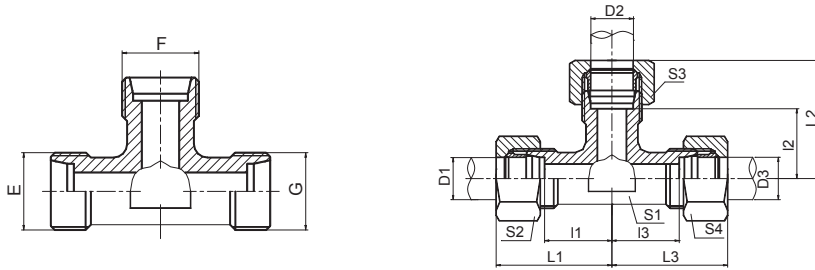


内螺纹堵头
FEMALE PLUG

9C
9D

代号 PART NO.	螺纹	管子外径	尺寸				压力等级 MPa
	THREAD	TUBE O.D.	DIMENSIONS				
	F	D	L	L1	S2		
9C-12	M12X1.5	6	15.5	17.5	14	31.5 轻系列 L	
9C-14	M14X1.5	8	15.5	18	17		
9C-16	M16X1.5	10	16.5	18	19		
9C-18	M18X1.5	12	18	19.5	22		
9C-22	M22X1.5	15	19.5	20	27		
9C-26	M26X1.5	18	20	22	32		
9C-30	M30X2	22	21.5	22.5	36	16 轻系列 L	
9C-36	M36X2	28	22.5	24.5	41		
9C-45	M45X2	35	25	29	55		
9C-52	M52X2	42	27	31.5	60		
9D-14	M14X1.5	6	16	18	17	63 重系列 S	
9D-16	M16X1.5	8	16.5	18.5	19		
9D-18	M18X1.5	10	18	20	22		
9D-20	M20X1.5	12	18.5	20.5	24		
9D-22	M22X1.5	14	19	21.5	27		
9D-24	M24X1.5	16	18.5	21.5	30	40 重系列 S	
9D-30	M30X2	20	22.5	25	36		
9D-36	M36X2	25	23.5	28.5	46		
9D-42	M42X2	30	25.5	32	50		
9D-52	M52X2	38	26.5	36	60	31.5 重系列 S	

DIN 卡套式管接头



三通接头
EQUAL TEES

AC
AD

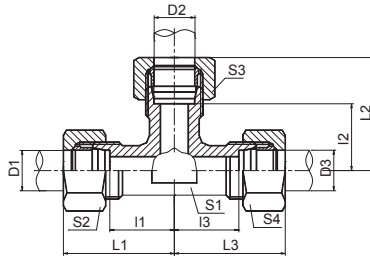
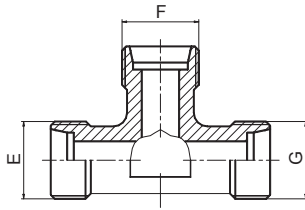
AC-RN
AD-RN

代号 PART NO.	螺纹 THREAD E, F, G	管子外径 TUBE O.D. D1, D2, D3	尺寸 DIMENSIONS					压力等级 MPa
			I1, I2, I3	L1, L2, L3	S1	S2, S3, S4		
AC-08	M8X1	4	11	21	9	10	10 特轻系列 LL	
AC-10	M10X1	5	9.5	21	9	12		
AC-10LL	M10X1	6	9.5	21	9	12		
AC-12LL	M12X1	8	11.5	23	12	14		
AC-12	M12X1.5	6	12	27	12	14	25 轻系列 L	
AC-14	M14X1.5	8	14	29	12	17		
AC-16	M16X1.5	10	15	30	14	19		
AC-18	M18X1.5	12	17	32	17	22		
AC-22	M22X1.5	15	21	36	19	27		
AC-26	M26X1.5	18	23.5	40	24	32		
AC-30	M30X2	22	27.5	44	27	36	16 轻系列 L	
AC-36	M36X2	28	30.5	47	36	41		
AC-45	M45X2	35	34.5	56	41	50		
AC-52	M52X2	42	40	63	50	60		
AD-14	M14X1.5	6	16	31	12	17	63 重系列 S	
AD-16	M16X1.5	8	17	32	14	19		
AD-18	M18X1.5	10	17.5	34	17	22		
AD-20	M20X1.5	12	21.5	38	17	24		
AD-22	M22X1.5	14	22	40	19	27		
AD-24	M24X1.5	16	24.5	43	24	30	40 重系列 S	
AD-30	M30X2	20	26.5	48	27	36		
AD-36	M36X2	25	30	54	36	46		
AD-42	M42X2	30	35.5	62	41	50		
AD-52	M52X2	38	41	72	50	60		
							31.5重系列S	

注：如需带卡套及卡套螺母整套订货，则请在代号后加“RN”，如AC-22RN。

Note: In case if you are interested to order the adapter in complete set with cutting ring and nut, it is necessary to insert suffix "RN" after our part no., for example AC-22RN.

DIN 卡套式管接头



三通变径接头
TEE REDUCERS

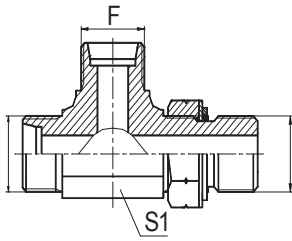
AC、AD

AC-RN、AD-RN

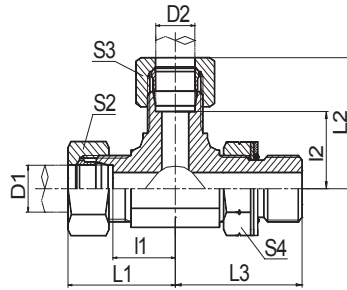
代号 PART NO.	螺纹 THREAD			管子外径 TUBE O.D.			尺寸 DIMENSIONS								压力等级 MPa	
	E	F	G	D1	D2	D3	I1	I2	I3	L1	L2	L3	S1	S2		S3
AC-12-14-12	M12X1.5	M14X1.5	M12X1.5	6	8	6	14	14	14	29	29	29	14	14	17	14
AC-12-16-12	M12X1.5	M16X1.5	M12X1.5	6	10	6	15	15	15	30	30	30	14	14	19	14
AC-12-16-16	M12X1.5	M16X1.5	M16X1.5	6	10	10	15	15	15	30	30	30	14	14	19	19
AC-14-12-14	M14X1.5	M12X1.5	M14X1.5	8	6	8	14	14	14	29	29	29	14	14	17	14
AC-14-14-18	M14X1.5	M14X1.5	M18X1.5	8	8	12	17	17	17	32	32	32	17	17	17	22
AC-14-16-14	M14X1.5	M16X1.5	M14X1.5	8	10	8	15	15	15	30	30	30	14	17	19	17
AC-14-18-14	M14X1.5	M14X1.5	M14X1.5	8	12	8	17	17	17	32	32	32	17	17	22	17
AC-16-12-16	M16X1.5	M12X1.5	M16X1.5	10	6	10	15	15	15	30	30	30	14	19	14	19
AC-16-14-16	M16X1.5	M14X1.5	M16X1.5	10	8	10	15	15	15	30	30	30	14	19	17	19
AC-16-16-18	M16X1.5	M16X1.5	M18X1.5	10	10	12	17	17	17	32	32	32	17	19	19	22
AC-16-16-26	M16X1.5	M16X1.5	M26X1.5	10	10	18	24	24	24	39	39	40	24	19	19	32
AC-16-18-16	M16X1.5	M18X1.5	M16X1.5	10	12	10	17	17	17	32	32	32	17	19	22	19
AC-16-18-18	M16X1.5	M18X1.5	M18X1.5	10	12	12	17	17	17	32	32	32	17	19	22	22
AC-16-22-16	M16X1.5	M22X1.5	M16X1.5	10	15	10	21	21	21	36	36	36	19	19	27	19
AC-16-26-26	M16X1.5	M26X1.5	M26X1.5	10	18	18	24	24	24	39	40	40	24	19	32	32
AC-18-12-18	M18X1.5	M12X1.5	M18X1.5	12	6	12	17	17	17	32	32	32	17	22	14	22
AC-18-14-18	M18X1.5	M14X1.5	M18X1.5	12	8	12	17	17	17	32	32	32	17	22	17	22
AC-18-16-18	M18X1.5	M18X1.5	M18X1.5	12	10	12	17	17	17	32	32	32	17	22	19	22
AC-18-18-22	M18X1.5	M18X1.5	M22X1.5	12	12	15	21	21	21	36	36	36	19	22	22	27
AC-18-22-18	M18X1.5	M22X1.5	M18X1.5	12	15	12	21	21	21	36	36	36	19	22	27	22
AC-18-22-22	M18X1.5	M22X1.5	M22X1.5	12	15	15	21	21	21	36	36	36	19	22	27	27
AC-18-22-30	M18X1.5	M22X1.5	M30X2	12	15	22	28	28	28	43	43	44	27	22	27	36
AC-18-26-18	M18X1.5	M26X1.5	M18X1.5	12	18	12	24	24	24	39	40	39	24	22	32	22
AC-22-12-22	M22X1.5	M12X1.5	M22X1.5	15	6	15	21	21	21	36	36	36	19	27	14	27
AC-22-16-22	M22X1.5	M16X1.5	M22X1.5	15	10	15	21	21	21	36	36	36	19	27	19	27
AC-22-18-22	M22X1.5	M18X1.5	M22X1.5	15	12	15	21	21	21	36	36	36	19	27	22	27
AC-22-22-30	M22X1.5	M22X1.5	M30X2	15	15	22	28	28	28	43	43	44	27	27	27	36
AC-22-26-22	M22X1.5	M26X1.5	M22X1.5	15	18	15	24	24	24	39	40	39	24	27	32	27
AC-26-16-26	M26X1.5	M16X1.5	M26X1.5	18	10	18	23.5	24	23.5	40	39	40	24	32	19	32
AC-26-18-26	M26X1.5	M18X1.5	M26X1.5	18	12	18	23.5	24	23.5	40	39	40	24	32	22	32
AC-26-22-26	M26X1.5	M22X1.5	M26X1.5	18	15	18	24	24	24	40	39	40	24	32	27	32
AC-26-26-30	M26X1.5	M26X1.5	M30X2	18	18	22	27.5	27.5	27.5	44	44	44	27	32	32	36
AC-26-30-30	M26X1.5	M30X2	M30X2	18	22	22	27.5	27.5	27.5	44	44	44	27	32	36	36
AC-30-16-30	M30X2	M16X1.5	M30X2	22	10	22	27.5	28	27.5	44	43	44	27	36	19	36
AC-30-18-30	M30X2	M18X1.5	M30X2	22	12	22	27.5	28	27.5	44	43	44	27	36	22	36
AC-30-22-30	M30X2	M22X1.5	M30X2	22	15	22	27.5	28	27.5	44	43	44	27	36	27	36
AC-30-26-30	M30X2	M26X1.5	M30X2	22	18	22	27.5	27.5	27.5	44	44	44	27	36	32	36
AC-30-30-36	M30X2	M30X2	M36X2	22	22	28	30.5	30.5	30.5	47	47	47	36	36	36	41
AC-36-16-36	M36X2	M16X1.5	M36X2	28	10	28	30.5	31	30.5	47	46	47	36	41	19	41
AC-36-18-36	M36X2	M18X1.5	M36X2	28	12	28	30.5	31	30.5	47	46	47	36	41	22	41
AC-36-22-36	M36X2	M22X1.5	M36X2	28	15	28	30.5	31	30.5	47	46	47	36	41	27	41
AC-36-26-36	M36X2	M26X1.5	M36X2	28	18	28	30.5	30.5	30.5	47	47	47	36	41	32	41
AC-36-30-36	M36X2	M30X2	M36X2	28	22	28	30.5	30.5	30.5	47	47	47	36	41	36	41
AD-16-16-20	M16X1.5	M16X1.5	M20X1.5	8	8	12	22	22	22	37	37	38	17	19	19	24
AD-18-14-18	M18X1.5	M14X1.5	M18X1.5	10	6	10	17.5	18	17.5	34	33	34	17	22	17	22
AD-20-16-20	M20X1.5	M16X1.5	M20X1.5	12	8	12	21.5	22	21.5	38	37	38	17	24	19	24
AD-20-18-20	M20X1.5	M18X1.5	M20X1.5	12	10	12	21.5	21.5	21.5	38	38	38	17	24	22	24
AD-20-20-30	M20X1.5	M20X1.5	M30X2	12	12	20	26.5	26.5	29.5	46	46	48	27	24	24	36
AD-20-24-20	M20X1.5	M24X1.5	M20X1.5	12	16	12	25.5	24.5	25.5	42	43	42	24	24	30	24
AD-20-30-20	M20X1.5	M30X2	M20X1.5	12	20	12	26.5	29.5	26.5	46	48	46	27	24	36	24
AD-20-30-30	M20X1.5	M30X2	M30X2	12	20	20	26.5	29.5	29.5	46	48	48	27	24	36	36
AD-24-14-24	M24X1.5	M14X1.5	M24X1.5	16	6	16	24.5	26	24.5	43	41	43	24	30	17	30
AD-24-16-24	M24X1.5	M16X1.5	M24X1.5	16	8	16	24.5	26	24.5	43	41	43	24	30	19	30
AD-24-18-24	M24X1.5	M18X1.5	M24X1.5	16	10	16	24.5	25.5	24.5	43	42	43	24	30	22	30
AD-24-20-24	M24X1.5	M20X1.5	M24X1.5	16	12	16	24.5	25.5	24.5	43	42	43	24	30	24	30
AD-24-30-24	M24X1.5	M30X2	M24X1.5	16	20	16	28.5	26.5	28.5	47	48	47	27	30	36	30
AD-30-18-30	M30X2	M18X1.5	M30X2	20	10	20	26.5	29.5	26.5	48	46	48	27	36	22	36
AD-30-20-30	M30X2	M20X1.5	M30X2	20	12	20	26.5	29.5	26.5	48	46	48	27	36	24	36
AD-30-24-30	M30X2	M24X1.5	M30X2	20	16	20	26.5	28.5	26.5	48	47	48	27	36	30	36
AD-30-36-30	M30X2	M36X2	M30X2	20	25	20	31.5	30	31.5	53	54	53	36	36	46	36
AD-36-24-36	M36X2	M24X1.5	M36X2	25	16	25	30	33.5	30	54	52	54	36	46	30	46
AD-36-30-36	M36X2	M30X2	M36X2	25	20	25	30	31.5	30	54	53	54	36	46	36	46
AD-36-42-36	M36X2	M42X2	M36X2	25	30	25	37	35.5	37	61	62	61	41	46	50	46

注：如需带卡套及卡套螺母整套订货，则请在代号后加“RN”，如AC-26-26-30RN。
Note: In case if you are interested to order the adapter in complete set with cutting ring and nut, it is necessary to insert suffix "RN" after our part no., for example AC-26-26-30RN.

DIN 卡套式管接头



ACCG-OG
ADDG-OG



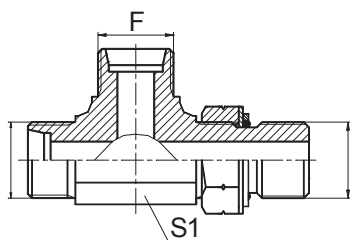
ACCG-OG/RN
ADDG-OG/RN

三通右端英管螺纹可调向 O 形圈密封
BARREL TEE BSP THREAD ADJUSTABLE
STUD ENDS WITH O-RING SEALING

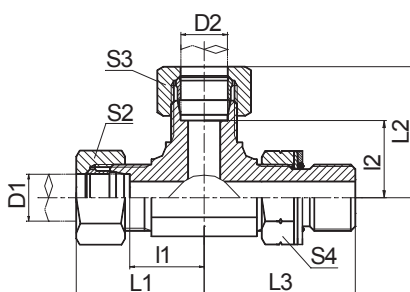
代号 PART NO.	螺纹 THREAD		管子外径 TUBE O.D. D1,D2	尺寸 DIMENSIONS						压力等级 MPa
	E,F	G		I1,I2	L1,L2	L3	S1	S2,S3	S4	
ACCG-12-12-02OG	M12X1.5	G1/8"X28	6	13	28	26.2	11	14	14	31.5 轻系列 L
ACCG-14-14-04OG	M14X1.5	G1/4"X19	8	15.5	30.5	31.3	14	17	19	
ACCG-16-16-04OG	M16X1.5	G1/4"X19	10	17.5	32.5	32.5	16	19	19	
ACCG-18-18-06OG	M18X1.5	G3/8"X19	12	19	34	36.8	19	22	22	
ACCG-22-22-08OG	M22X1.5	G1/2"X14	15	22	37	43.2	22	27	27	
ACCG-26-26-08OG	M26X1.5	G1/2"X14	18	25.5	42	46.5	27	32	27	
ACCG-30-30-12OG	M30X2	G3/4"X14	22	29.3	45.8	52	30	36	32	16 轻系列 L
ACCG-36-36-16OG	M36X2	G1"X11	28	33.3	49.8	56	36	41	41	
ACCG-45-45-20OG	M45X2	G1.1/4"X11	35	39.2	60.7	63	48	50	50	
ADDG-14-14-04OG	M14X1.5	G1/4"X19	6	17.5	32.5	31.3	14	17	19	63 重系列 S
ADDG-16-16-04OG	M16X1.5	G1/4"X19	8	18.7	33.7	32.5	16	19	19	
ADDG-18-18-06OG	M18X1.5	G3/8"X19	10	19.5	36	36.8	19	22	22	
ADDG-20-20-06OG	M20X1.5	G3/8"X19	12	19.5	36	36.8	19	24	22	
ADDG-22-22-08OG	M22X1.5	G1/2"X14	14	23	41	43.2	22	27	27	
ADDG-24-24-08OG	M24X1.5	G1/2"X14	16	24	42.5	44	24	30	27	40 重系列 S
ADDG-30-30-12OG	M30X2	G3/4"X14	20	28.3	49.8	52	30	36	32	
ADDG-36-36-16OG	M36X2	G1"X11	25	32.8	56.8	56	36	46	41	
ADDG-42-42-20OG	M42X2	G1.1/4"X11	30	36.2	62.7	58	41	50	50	

注：如需带卡套及卡套螺母,订货时请在代号后加“RN”,如ACCG-18-18-06OG/RN。

Note: In case if you are interested to order the adapter in complete set with cutting ring and nut ,it is necessary to insert suffix "RN" after our Part No. , for example ACCG-18-18-06OG/RN.



ACCH-OG
ADDH-OG



ACCH-OG/RN
ADDH-OG/RN

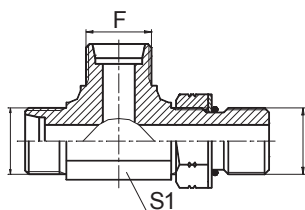
三通公制外螺纹 24° 锥 / 公制外螺纹可调向柱端 ISO 6149-2
METRIC MALE 24° CONE / METRIC MALE
ADJUSTABLE STUD END ISO 6149-2
RUN TEE

代号 PART NO.	螺纹 THREAD		管子外径 D1,D2 TUBE O.D.	O 形 圈 O RING	尺寸 DIMENSIONS						压力等级 MPa
	E,F	G			I1,I2	L1,L2	L3	S1	S2,S3	S4	
ACCH-12-12-10OG	M12X1.5	M10X1	6	O08.1X1.6	13	28	26.5	11	14	14	31.5 轻系列 L
ACCH-14-14-12OG	M14X1.5	M12X1.5	8	O09.3X2.4	15.5	30.5	32	14	17	17	
ACCH-16-16-14OG	M16X1.5	M14X1.5	10	O11.3X2.4	17.5	32.5	34	16	19	19	
ACCH-18-18-16OG	M18X1.5	M16X1.5	12	O13.3X2.4	19	34	36	19	22	22	
ACCH-22-22-18OG	M22X1.5	M18X1.5	15	O15.3X2.4	22	37	39.5	22	27	24	
ACCH-26-26-22OG	M26X1.5	M22X1.5	18	O19.3X2.4	25.5	42	43.5	27	32	27	
ACCH-30-30-27OG	M30X2	M27X2	22	O23.5X3.0	29.3	45.8	50	30	36	32	16 轻系列
ACCH-36-36-33OG	M36X2	M33X2	28	O29.2X3.0	33.3	49.8	54	36	41	41	
ADDH-14-14-12OG	M14X1.5	M12X1.5	6	O09.3X2.4	17.5	32.5	32	14	17	17	63 重系列 S
ADDH-16-16-14OG	M16X1.5	M14X1.5	8	O11.3X2.4	18.7	33.7	34	16	19	19	
ADDH-18-18-16OG	M18X1.5	M16X1.5	10	O13.3X2.4	19.5	36	36	19	22	22	
ADDH-20-20-18OG	M20X1.5	M18X1.5	12	O15.3X2.4	19.5	36	37	19	24	24	
ADDH-24-24-22OG	M24X1.5	M22X1.5	16	O19.3X2.4	24	42	37.5	24	30	27	
ADDH-30-30-27OG	M30X2	M27X2	20	O23.5X3.0	28.3	49.8	50	30	36	32	40 重系列 S
ADDH-36-36-33OG	M36X2	M33X2	25	O29.2X3.0	32.8	56.8	54	36	46	41	
ADDH-42-42-42OG	M42X2	M42X2	30	O38.5X3.0	36.2	62.7	57.2	41	50	50	

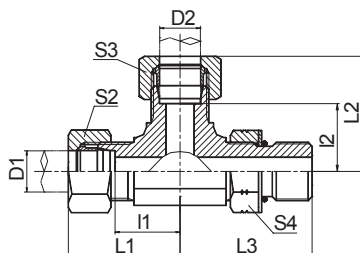
注: 1 如需带卡套及卡套螺母整套订货, 则请在代号后加"RN",如ACCH-30-30-27OG/RN。 2 G端与ISO 9974-1油口相配, 去掉挡圈则与ISO 6149-1油口相配。

Note: 1 In case if you are interested to order the adapter in complete set with cutting ring and nut ,it is necessary to insert suffix "RN" after our part no., for example ACCH-30-30-27OG/RN. 2 G end is connected with ISO 9974-1 port and connected with ISO 6149-1 port without retaining ring.

DIN 卡套式管接头



ACCO-OG
ADDO-OG



ACCO-OG/RN
ADDO-OG/RN

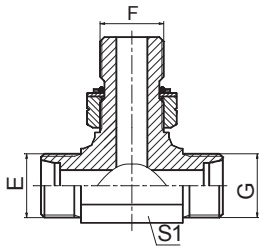
三通右端美制螺纹可调向 O 形圈密封
BARREL TEE UN、UNF THREAD ADJUSTABLE
STUD ENDS WITH O-RING SEALING

代号 PART NO.	螺纹 THREAD		管子外径 TUBE O.D.	尺寸 DIMENSIONS						压力等级 MPa
	E,F	G		D1,D2	I1,I2	L1,L2	L3	S1	S2,S3	
ACCO-12-12-04OG	M12X1.5	7/16"X20	6	13	28	27.2	11	14	17	31.5 轻系列 L
ACCO-14-14-06OG	M14X1.5	9/16"X18	8	15.5	30.5	31.8	14	17	19	
ACCO-16-16-06OG	M16X1.5	9/16"X18	10	17.5	32.5	33.3	16	19	19	
ACCO-18-18-08OG	M18X1.5	3/4"X16	12	19	34	37.5	19	22	24	
ACCO-22-22-10OG	M22X1.5	7/8"X14	15	22	37	44	22	27	27	
ACCO-26-26-12OG	M26X1.5	1.1/16"X12	18	25.5	42	51	27	32	32	
ACCO-30-30-12OG	M30X2	1.1/16"X12	22	29.3	45.8	53.5	30	36	32	16 轻系列 L
ACCO-36-36-16OG	M36X2	1.5/16"X12	28	33.3	49.8	57.5	36	41	41	
ACCO-45-45-20OG	M45X2	1.5/8"X12	35	39.2	60.7	63	48	50	50	
ADDO-14-14-04OG	M14X1.5	7/16"X20	6	17.5	32.5	30	14	17	17	63 重系列 S
ADDO-16-16-06OG	M16X1.5	9/16"X18	8	18.7	33.7	33.3	16	19	19	
ADDO-18-18-06OG	M18X1.5	9/16"X18	10	19.5	36	33.5	19	22	19	
ADDO-20-20-08OG	M20X1.5	3/4"X16	12	19.5	36	37.5	19	24	24	
ADDO-22-22-10OG	M22X1.5	7/8"X14	14	23	41	44	22	27	27	
ADDO-24-24-10OG	M24X1.5	7/8"X14	16	24	42.5	46.5	24	30	27	40 重系列 S
ADDO-30-30-12OG	M30X2	1.1/16"X12	20	28.3	49.8	53.5	30	36	32	
ADDO-36-36-16OG	M36X2	1.5/16"X12	25	32.8	56.8	57.5	36	46	41	
ADDO-42-42-20OG	M42X2	1.5/8"X12	30	36.2	62.7	59.5	41	50	50	

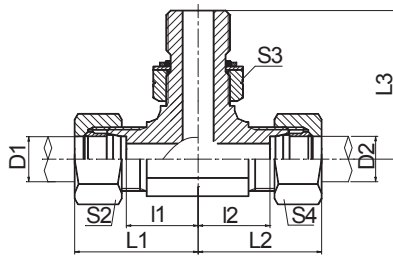
注：如需带卡套及卡套螺母整套订货，则请在代号后加“RN”，如 ACCO-30-30-12OG/RN。

Note: In case if you are interested to order the adapter in complete set with cutting ring and nut ,it is necessary to insert suffix"RN" after our part no. , for example ACCO-30-30-12OG/RN.

DIN 卡套式管接头



ACGC-OG
ADGD-OG



ACGC-OG/RN
ADGD-OG/RN

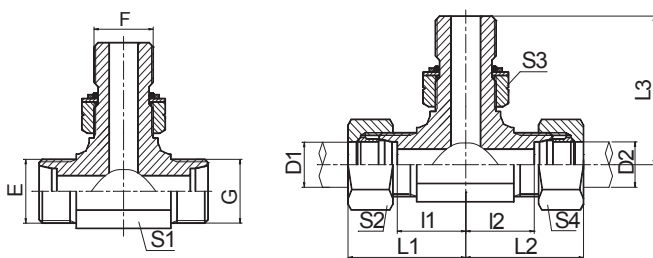
三通中间端英管螺纹可调向O形圈密封
BRANCH TEE BSP THREAD ADJUSTABLE
STUD ENDS WITH O-RING SEALING

代号 PART NO.	螺纹 THREAD		管子外径 TUBE O.D.	尺寸 DIMENSIONS						压力等级 MPa
	E,G	F		D1,D2	I1,I2	L1,L2	L3	S1	S2,S4	
ACGC-12-02-12OG	M12X1.5	G1/8"X28	6	13	28	26.2	11	14	14	31.5 轻系列 L
ACGC-14-04-14OG	M14X1.5	G1/4"X19	8	15.5	30.5	31.3	14	17	19	
ACGC-16-04-16OG	M16X1.5	G1/4"X19	10	17.5	32.5	32.5	16	19	19	
ACGC-18-06-18OG	M18X1.5	G3/8"X19	12	19	34	36.8	19	22	22	
ACGC-22-08-22OG	M22X1.5	G1/2"X14	15	22	37	43.2	22	27	27	
ACGC-26-08-26OG	M26X1.5	G1/2"X14	18	25.5	42	46.5	27	32	27	
ACGC-30-12-30OG	M30X2	G3/4"X14	22	29.3	45.8	52	30	36	32	16 轻系列 L
ACGC-36-16-36OG	M36X2	G1"X11	28	33.3	49.8	56	36	41	41	
ACGC-45-20-45OG	M45X2	G1.1/4"X11	35	39.2	60.7	63	48	50	50	
ADGD-14-04-14OG	M14X1.5	G1/4"X19	6	17.5	32.5	31.3	14	17	19	63 重系列 S
ADGD-16-04-16OG	M16X1.5	G1/4"X19	8	18.7	33.7	32.5	16	19	19	
ADGD-18-06-18OG	M18X1.5	G3/8"X19	10	19.5	36	36.8	19	22	22	
ADGD-20-06-20OG	M20X1.5	G3/8"X19	12	19.5	36	36.8	19	24	22	
ADGD-22-08-22OG	M22X1.5	G1/2"X14	14	23	41	43.2	22	27	27	
ADGD-24-08-24OG	M24X1.5	G1/2"X14	16	24	42.5	44	24	30	27	40 重系列 S
ADGD-30-12-30OG	M30X2	G3/4"X14	20	28.3	49.8	52	30	36	32	
ADGD-36-16-36OG	M36X2	G1"X11	25	32.8	56.8	56	36	46	41	
ADGD-42-20-42OG	M42X2	G1.1/4"X11	30	36.2	62.7	58	41	50	50	

注：如需带卡套及卡套螺母,订货时请在代号后加“RN”,如ACGC-18-06-18OG/RN。

Note: In case if you are interested to order the adapter in complete set with cutting ring and nut ,it is necessary to insert suffix "RN" after our part no., for example ACGC-18-06-18OG/RN.

DIN 卡套式管接头



公制外螺纹 24° 锥 / 公制外螺纹
 可调向柱端 ISO 6149 分支三通
 METRIC MALE 24° CONE / METRIC MALE
 ADJUSTABLE STUD END ISO 6149
 BRANCH TEE

ACHC-OG
ADHD-OG

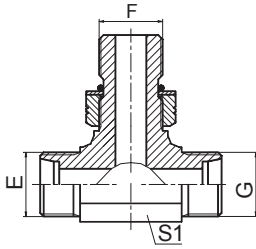
ACHC-OG/RN
ADHD-OG/RN

代号 PART NO.	螺纹 THREAD		管子外径 D1,D2 TUBE O.D.	O 形圈 O RING	尺寸 DIMENSIONS						压力等级 MPa
	E,G	F			I1,I2	L1,L2	L3	S1	S2,S4	S3	
ACHC-12-10-12OG	M12X1.5	M10X1	6	O08.1X1.6	13	28	26.5	11	14	14	31.5 轻系列 L
ACHC-14-12-14OG	M14X1.5	M12X1.5	8	O09.3X2.4	15.5	30.5	32	14	17	17	
ACHC-16-14-16OG	M16X1.5	M14X1.5	10	O11.3X2.4	17.5	32.5	34	16	19	19	
ACHC-18-16-18OG	M18X1.5	M16X1.5	12	O13.3X2.4	19	34	36	19	22	22	
ACHC-22-18-22OG	M22X1.5	M18X1.5	15	O15.3X2.4	22	37	39.5	22	27	24	
ACHC-26-22-26OG	M26X1.5	M22X1.5	18	O19.3X2.4	25.5	42	43.5	27	32	27	
ACHC-30-27-30OG	M30X2	M27X2	22	O23.5X3.0	29.3	45.8	50	30	36	32	16 轻系列
ACHC-36-33-36OG	M36X2	M33X2	28	O29.2X3.0	33.3	49.8	54	36	41	41	
ADHD-14-12-14OG	M14X1.5	M12X1.5	6	O09.3X2.4	17.5	32.5	32	14	17	17	63 重系列 S
ADHD-16-14-16OG	M16X1.5	M14X1.5	8	O11.3X2.4	18.7	33.7	34	16	19	19	
ADHD-18-16-18OG	M18X1.5	M16X1.5	10	O13.3X2.4	19.5	36	36	19	22	22	
ADHD-20-18-20OG	M20X1.5	M18X1.5	12	O15.3X2.4	19.5	36	37	19	24	24	
ADHD-24-22-24OG	M24X1.5	M22X1.5	16	O19.3X2.4	24	42	37.5	24	30	27	
ADHD-30-27-30OG	M30X2	M27X2	20	O23.5X3.0	28.3	49.8	50	30	36	32	40 重系列 S
ADHD-36-33-36OG	M36X2	M33X2	25	O29.2X3.0	32.8	56.8	54	36	46	41	
ADHD-42-42-42OG	M42X2	M42X2	30	O38.5X3.0	36.2	62.7	57.2	41	50	50	

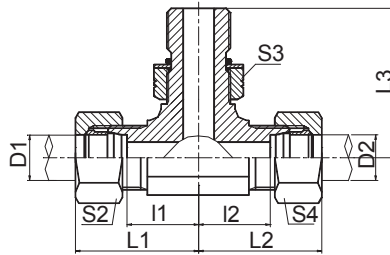
注：1如需带卡套及卡套螺母整套订货，则请在代号后加“RN”，如ACHC-30-27-30OG/RN。 2 F端与ISO 9974-1油口相配，去掉挡圈则与ISO 6149-1油口相配。

Note: 1 In case if you are interested to order the adapter in complete set with cutting ring and nut ,it is necessary to insert suffix "RN" after our part no., for example ACHC-30-27-30OG/RN. 2 F end is connected with ISO 9974-1port and connected with ISO 6149-1 port without retaining ring.

DIN 卡套式管接头



ACOC-OG
ADOD-OG



ACOC-OG/RN
ADOD-OG/RN

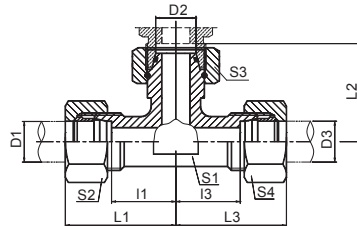
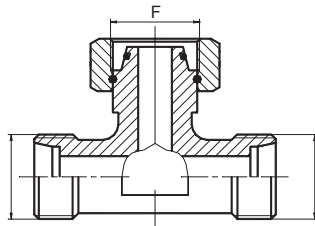
三通中间端美制螺纹可调向 O 形圈密封
BRANCH TEE UN、UNF THREAD ADJUSTABLE
STUD ENDS WITH O-RING SEALING

代号 PART NO.	螺纹 THREAD		管子外径 TUBE O.D. D1,D2	尺寸 DIMENSIONS						压力等级 MPa
	E,G	F		I1,I2	L1,L2	L3	S1	S2,S4	S3	
ACOC-12-04-12OG	M12X1.5	7/16"X20	6	13	28	27.2	11	14	17	31.5 轻系列 L
ACOC-14-06-14OG	M14X1.5	9/16"X18	8	15.5	30.5	31.8	14	17	19	
ACOC-16-06-16OG	M16X1.5	9/16"X18	10	17.5	32.5	33.3	16	19	19	
ACOC-18-08-18OG	M18X1.5	3/4"X16	12	19	34	37.5	19	22	24	
ACOC-22-10-22OG	M22X1.5	7/8"X14	15	22	37	44	22	27	27	
ACOC-26-12-26OG	M26X1.5	1.1/16"X12	18	25.5	42	51	27	32	32	
ACOC-30-12-30OG	M30X2	1.1/16"X12	22	29.3	45.8	53.5	30	36	32	16 轻系列 L
ACOC-36-16-36OG	M36X2	1.5/16"X12	28	33.3	49.8	57.5	36	41	41	
ACOC-45-20-45OG	M45X2	1.5/8"X12	35	39.2	60.7	63	48	50	50	
ADOD-14-04-14OG	M14X1.5	7/16"X20	6	17.5	32.5	30	14	17	17	63 重系列 S
ADOD-16-06-16OG	M16X1.5	9/16"X18	8	18.7	33.7	33.3	16	19	19	
ADOD-18-06-18OG	M18X1.5	9/16"X18	10	19.5	36	33.5	19	22	19	
ADOD-20-08-20OG	M20X1.5	3/4"X16	12	19.5	36	37.5	19	24	24	
ADOD-22-10-22OG	M22X1.5	7/8"X14	14	23	41	44	22	27	27	
ADOD-24-10-24OG	M24X1.5	7/8"X14	16	24	42.5	46.5	24	30	27	40 重系列 S
ADOD-30-12-30OG	M30X2	1.1/16"X12	20	28.3	49.8	53.5	30	36	32	
ADOD-36-16-36OG	M36X2	1.5/16"X12	25	32.8	56.8	57.5	36	46	41	
ADOD-42-20-42OG	M42X2	1.5/8"X12	30	36.2	62.7	59.5	41	50	50	

注：如需带卡套及卡套螺母整套订货，则请在代号后加“RN”，如ACOC-30-12-30OG/RN。

Note: In case if you are interested to order the adapter in complete set with cutting ring and nut ,it is necessary to insert suffix "RN" after our part no., for example ACOC-30-12-30OG/RN.

DIN 卡套式管接头



中间端内螺纹三通接头
BRANCH TEE FITTINGS
WITH SWIVEL NUT

**BC
BD**

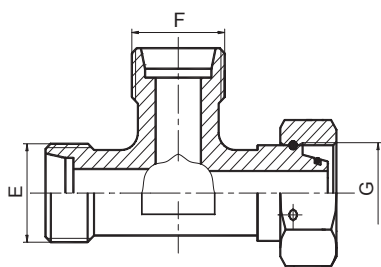
**BC-RN
BD-RN**

代号 PART NO.	螺纹 THREAD		管子外径 TUBE O.D.		尺寸 DIMENSIONS						压力等级 MPa
	E,G	F	D1,D3	D2	I1,I3	L1,L3	L2	S1	S2,S4	S3	
BC-12	M12X1.5	M12X1.5	6	6	12	27	26	12	14	14	31.5 轻系列 L
BC-14	M14X1.5	M14X1.5	8	8	14	29	27.5	12	17	17	
BC-16	M16X1.5	M16X1.5	10	10	15	30	29	14	19	19	
BC-18	M18X1.5	M18X1.5	12	12	17	32	29.5	17	22	22	
BC-22	M22X1.5	M22X1.5	15	15	21	36	32.5	19	27	27	
BC-26	M26X1.5	M26X1.5	18	18	23.5	40	35.5	24	32	32	
BC-30	M30X2	M30X2	22	22	27.5	44	38.5	27	36	36	16 轻系列 L
BC-36	M36X2	M36X2	28	28	30.5	47	41.5	36	41	41	
BC-45	M45X2	M45X2	35	35	34.5	56	51	41	50	50	
BC-52	M52X2	M52X2	42	42	40	63	56	50	60	60	
BD-14	M14X1.5	M14X1.5	6	6	16	31	27	12	17	17	63 重系列 S
BD-16	M16X1.5	M16X1.5	8	8	17	32	27.5	14	19	19	
BD-18	M18X1.5	M18X1.5	10	10	17.5	34	30	17	22	22	
BD-20	M20X1.5	M20X1.5	12	12	21.5	38	31	17	24	24	
BD-22	M22X1.5	M22X1.5	14	14	22	40	35	19	27	27	40 重系列 S
BD-24	M24X1.5	M24X1.5	16	16	24.5	43	36.5	24	30	30	
BD-30	M30X2	M30X2	20	20	26.5	48	44.5	27	36	36	
BD-36	M36X2	M36X2	25	25	30	54	50	36	46	46	
BD-42	M42X2	M42X2	30	30	35.5	62	55	41	50	50	31.5 重系列 S
BD-52	M52X2	M52X2	38	38	41	72	63	50	60	60	

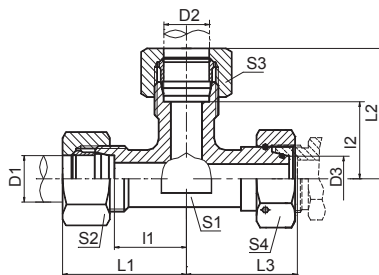
注：如需带卡套及卡套螺母整套订货，则请在代号后加“RN”，如BC-30RN。

Note: In case if you are interested to order the adapter in complete set with cutting ring and nut, it is necessary to insert suffix "RN" after our part no., for example BC-30RN.

DIN 卡套式管接头



CC
CD



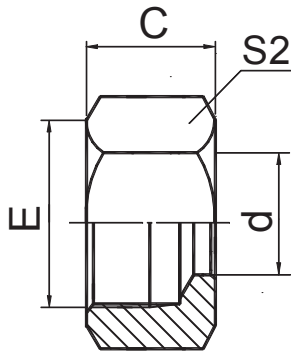
CC-RN
CD-RN

右端内螺纹三通接头
BARREL TEE FITTINGS
WITH SWIVEL NUT

代号 PART NO.	螺纹 THREAD		管子外径 TUBE O.D.		尺寸 DIMENSIONS						压力等级 MPa
	E,F	G	D1,D2	D3	I1,I2	L1,L2	L3	S1	S2,S3	S4	
CC-12	M12X1.5	M12X1.5	6	6	12	27	26	12	14	14	31.5 轻系列 L
CC-14	M14X1.5	M14X1.5	8	8	14	29	27.5	12	17	17	
CC-16	M16X1.5	M16X1.5	10	10	15	30	29	14	19	19	
CC-18	M18X1.5	M18X1.5	12	12	17	32	29.5	17	22	22	
CC-22	M22X1.5	M22X1.5	15	15	21	36	32.5	19	27	27	
CC-26	M26X1.5	M26X1.5	18	18	23.5	40	35.5	24	32	32	
CC-30	M30X2	M30X2	22	22	27.5	44	38.5	27	36	36	16 轻系列 L
CC-36	M36X2	M36X2	28	28	30.5	47	41.5	36	41	41	
CC-45	M45X2	M45X2	35	35	34.5	56	51	41	50	50	
CC-52	M52X2	M52X2	42	42	40	63	56	50	60	60	
CD-14	M14X1.5	M14X1.5	6	6	16	31	27	12	17	17	63 重系列 S
CD-16	M16X1.5	M16X1.5	8	8	17	32	27.5	14	19	19	
CD-18	M18X1.5	M18X1.5	10	10	17.5	34	30	17	22	22	
CD-20	M20X1.5	M20X1.5	12	12	21.5	38	31	17	24	24	
CD-22	M22X1.5	M22X1.5	14	14	22	40	35	19	27	27	
CD-24	M24X1.5	M24X1.5	16	16	24.5	43	36.5	24	30	30	40 重系列 S
CD-30	M30X2	M30X2	20	20	26.5	48	44.5	27	36	36	
CD-36	M36X2	M36X2	25	25	30	54	50	36	46	46	
CD-42	M42X2	M42X2	30	30	35.5	62	55	41	50	50	
CD-52	M52X2	M52X2	38	38	41	72	63	50	60	60	31.5 重系列 S

注：如需带卡套及卡套螺母整套订货，则请在代号后加“RN”，如 CC-30RN。

Note: In case if you are interested to order the adapter in complete set with cutting ring and nut ,it is necessary to insert suffix "RN" after our part no. , for example CC-30RN.

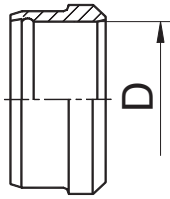


NL
NS

卡套螺母
RETAINING NUTS

代号 PART NO.	螺纹 THREAD		管子外径 TUBE O.D.	尺寸 DIMENSIONS						压力等级 MPa
	E			C	d	S2				
NL-12	M12X1.5		6	14.5	6	14				轻系列 L
NL-14	M14X1.5		8	14.5	8	17				
NL-16	M16X1.5		10	15.5	10	19				
NL-18	M18X1.5		12	15.5	12	22				
NL-22	M22X1.5		15	17	15	27				
NL-26	M26X1.5		18	18	18	32				
NL-30	M30X2		22	20	22	36				
NL-30D	M30X1.5		22	19	22	36				
NL-36	M36X2		28	21	28	41				
NL-36D	M36X1.5		28	21	28	41				
NL-45	M45X2		35	24	35	50				
NL-45D	M45X1.5		35	25	35	50				
NL-52	M52X2		42	24	42	60				
NS-14	M14X1.5		6	16.5	6	17				
NS-16	M16X1.5		8	16.5	8	19				
NS-18	M18X1.5		10	17.5	10	22				
NS-20	M20X1.5		12	17.5	12	24				
NS-22	M22X1.5		14	20.5	14	27				
NS-24	M24X1.5		16	20.5	16	30				
NS-30	M30X2		20	24	20	36				
NS-36	M36X2		25	27	25	46				
NS-42	M42X2		30	29	30	50				
NS-52	M52X2		38	32.5	38	60				

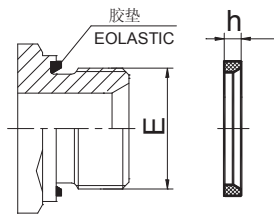
DIN 卡套式管接头



**RL
RS**

卡套
CUTTING RING

代号 PART NO.	管子外径 D TUBE O.D.		尺寸 DIMENSIONS				备注
RL-06		6	与重系列相应规格一致				轻系 L 列
RL-08		8					
RL-10		10					
RL-12		12					
RL-15		15					
RL-18		18					
RL-22		22					
RL-28		28					
RL-35		35					
RL-42		42					
RS-06		6					重系 S 列
RS-08		8					
RS-10		10					
RS-12		12					
RS-14		14					
RS-16		16					
RS-20		20					
RS-25		25					
RS-30		30					
RS-38		38					

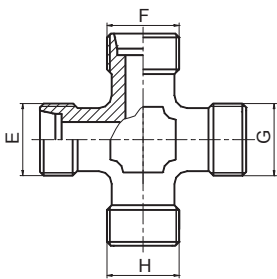


WD

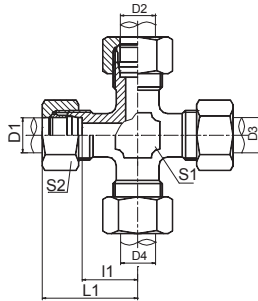
胶垫
CAPTIVE SEAL

代号 PART NO.	螺纹 E THREAD		尺寸 DIMENSIONS			
	公制 METRIC	英管 BSP		h		
WD-B02	M10X1	G1/8"X28		1		
WD-M12	M12X1.5			1.5		
WD-B04	M14X1.5	G1/4"X19		1.5		
WD-M16	M16X1.5			1.5		
WD-B06		G3/8"X19		1.5		
WD-M18	M18X1.5			1.5		
WD-M20	M20X1.5			1.5		
WD-B08		G1/2"X14		1.5		
WD-M22	M22X1.5			1.5		
WD-B12	M26X1.5	G3/4"X14		1.5		
	M27X2					
WD-B16	M33X2	G1"X11		2		
WD-B20	M42X2	G1.1/4"X11		2		
WD-B24	M48X2	G1.1/2"X11		2		

DIN 卡套式管接头



XC
XD



XC-RN
XD-RN

四通接头
CROSS FITTINGS

代号 PART NO.	螺纹 THREAD		管子外径 TUBE O.D.		尺寸 DIMENSIONS				压力等级 MPa
	E,F,G,H		D1,D2,D3,D4		l1	L1	S1	S2	
XC-12	M12X1.5		6		12	27	12	14	31.5 轻系列 L
XC-14	M14X1.5		8		14	29	12	17	
XC-16	M16X1.5		10		15	30	14	19	
XC-18	M18X1.5		12		17	32	17	22	
XC-22	M22X1.5		15		21	36	19	27	
XC-26	M26X1.5		18		23.5	40	24	32	
XC-30	M30X2		22		27.5	44	27	36	16 轻系列 L
XC-36	M36X2		28		30.5	47	36	41	
XC-45	M45X2		35		34.5	56	41	50	
XC-52	M52X2		42		40	63	50	60	
XD-14	M14X1.5		6		16	31	12	17	63 重系列 S
XD-16	M16X1.5		8		17	32	14	19	
XD-18	M18X1.5		10		17.5	34	17	22	
XD-20	M20X1.5		12		21.5	38	17	24	
XD-22	M22X1.5		14		22	40	19	27	
XD-24	M24X1.5		16		24.5	43	24	30	40 重系列 S
XD-30	M30X2		20		26.5	48	27	36	
XD-36	M36X2		25		30	54	36	46	
XD-42	M42X2		30		35.5	62	41	50	
XD-52	M52X2		38		41	72	50	60	31.5 重系列 S

注：如需带卡套及卡套螺母整套订货，则请在代号后加“RN”，如XC-30RN。

Note: In case if you are interested to order the adapter in complete set with cutting ring and nut ,it is necessary to insert suffix "RN" after our part no., for example XC-30RN.